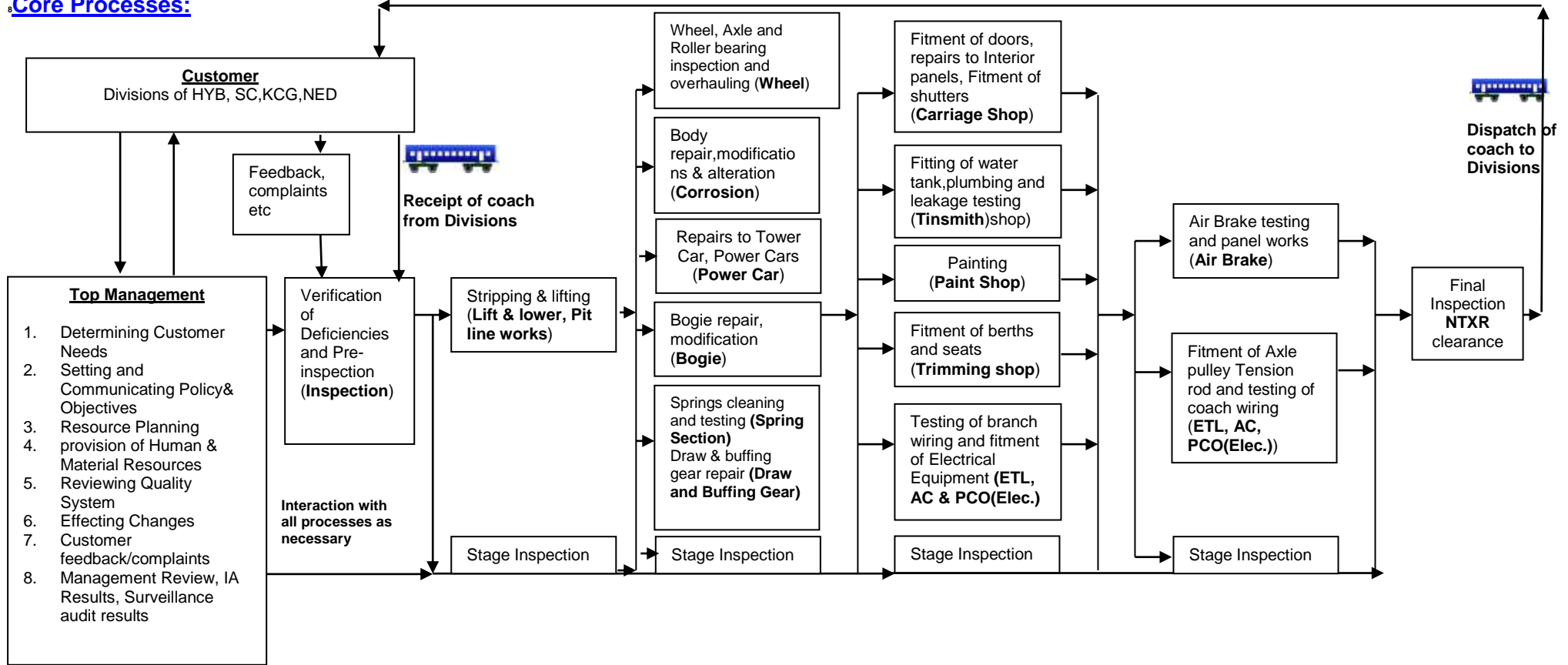


S.C. Railway Carriage Workshops Lallaguda	Integrated Management System – Manual		Annexure – IV	
	Title: Process Identification and Interaction			
	Approved by: CWM		Rev. No.	00
	Signature:		Effective Date:	01/02/2020
Page 1 of 3				

I. Interaction of various Processes at Carriage Workshop, Lallaguda, S.C.Railway

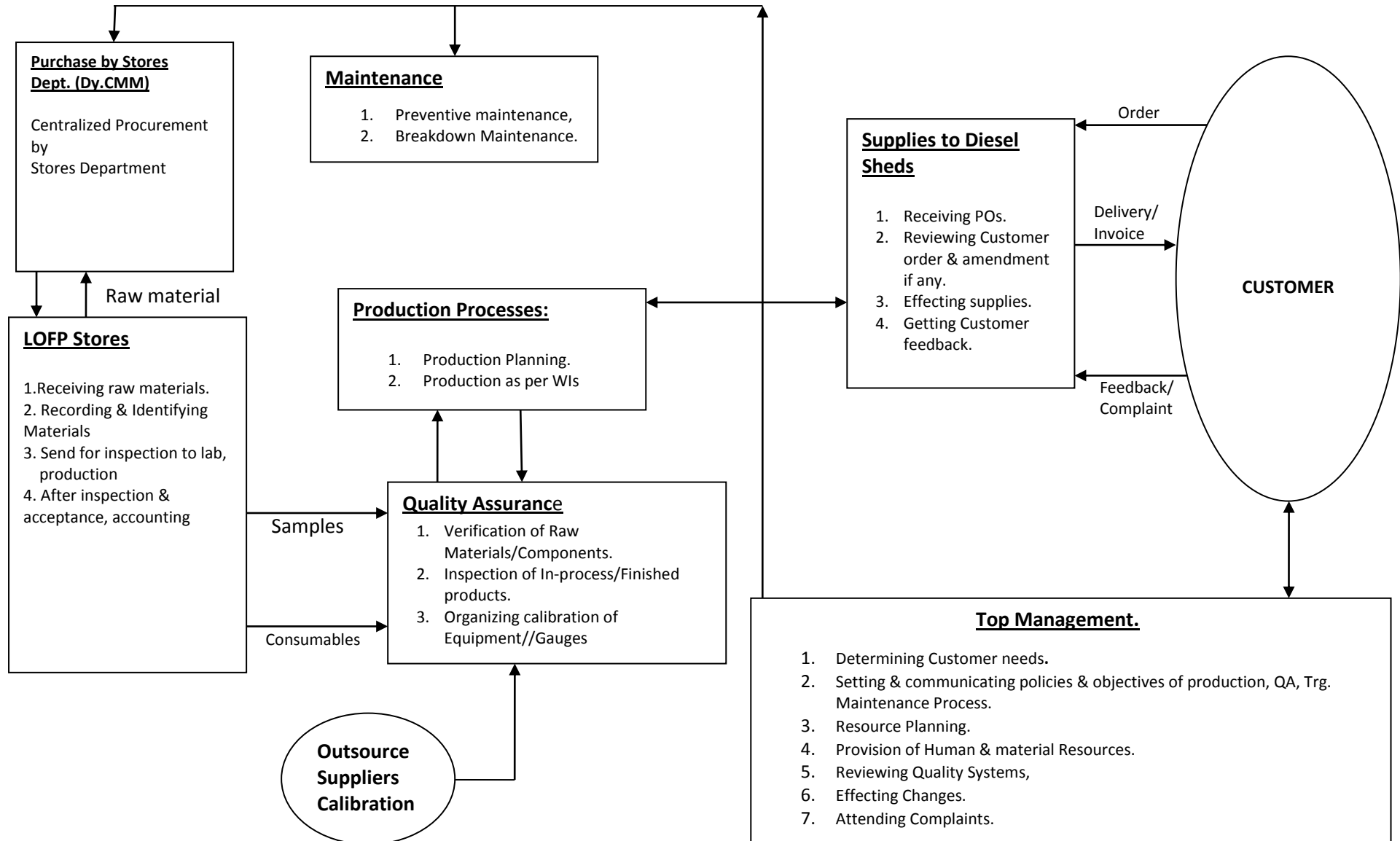
Core Processes:



- | | | | | | | | | | | | | | | |
|-----|---------|-----------|-----|---------|-------------------|--------------|---------|----------|------------|----------|----------|--------|---------|---------------------|
| BTC | CMT Lab | Component | CTR | Drawing | Elec. Maintenance | Elec. Repair | Machine | Material | Millwright | Planning | Progress | Spring | Welding | Safety Organization |
|-----|---------|-----------|-----|---------|-------------------|--------------|---------|----------|------------|----------|----------|--------|---------|---------------------|

S.C. Railway Carriage Workshops Lallaguda	Integrated Management System – Manual		Annexure– IV
	Title:	Process Identification and Interaction	
	Approved by: CWM	Rev. No.	00
	Signature:	Effective Date:	01/02/2020
			Page 2 of 3

II. Interaction of various Processes at Lube Oil Filter Plant, S.C.Railway



S.C. Railway Carriage Workshops Lallaguda	Integrated Management System – Manual		Annexure– IV
	Title:	Process Identification and Interaction	
	Approved by: CWM	Rev. No.	00
	Signature:	Effective Date:	01/02/2020
			Page 3 of 3

- 1.0 Criteria and method are determined in the respective procedures to ensure that both the operation and control of these processes are effective.
- 2.0 Necessary availability of resources and information is ensured.
- 3.0 The control over the outsourced processes is achieved through terms and conditions, which are agreed to between Carriage workshop, Lallaguda/Lube Oil Filter Plant, SC and the Contractor. After receiving the product/fitment from the contractor, it is inspected /tested to suit the terms and conditions put in the contract documents.
- 4.0 The outsourced processes are as under:-
 - Refurbishment of SKF make CTR-Bearing of LHB coaches.
 - Testing of different process parameters conforming to TPCB norms.
 - Training of personnel for implementation of IMS consisting of ISO - 9001:2015, ISO - 14001:2015, ISO 45001:2018 & ISO 50001:2018.
 - Cleaning of Bogie Frames and components.
 - Conversion of BG coaches into ART/ARME coaches.
 - Supply, installation and testing of equipment, accessories of Non-AC pantry cars.
 - Disposal and transportation of Hazardous wastes from LGD workshop to waste management contract or as per TPCB.
 - Transportation of junk ferrous scrap from LGD workshop to scrap yard.
 - Transportation of countable items ferrous scrap from LGD workshop to scrap yard.
 - Transportation of filled/used grease, kerosene and Lub-Oil drums-210 Ltrs. from LGD workshop to scrap yard.
 - Sale and removal of Industrial waste products from LGD workshop.
 - Housekeeping/cleaningofLGDworkshoppremises/toilets/washingareas/WCatLGDworkshopasperscopeofthework.
 - Transportation of condemned battery cells from LGD workshop to scrap yard.
 - Maintenance of Roof Mounted AC Units of Coach.