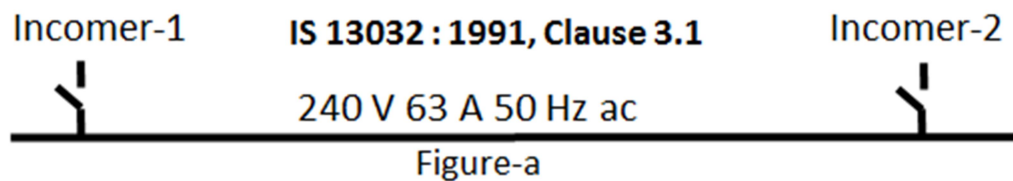


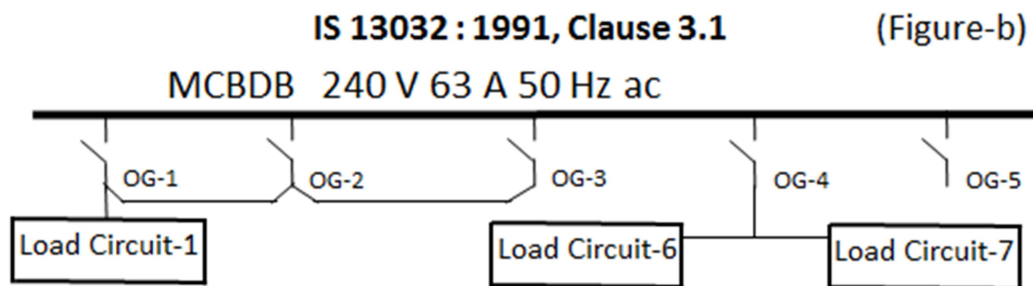
VII. IS 13032 : 1991 clause 9.1.2 Routine Tests

“Routine tests are intended to detect faults in materials and workmanship. They are carried out on every new MCB board after its assembly or on each transport unit. **Another routine test at the place of installation is not required.**”

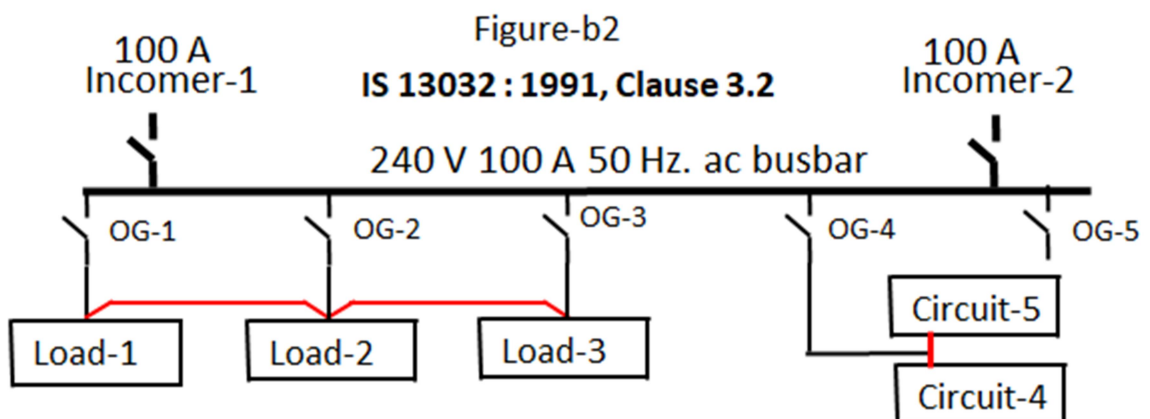
1. Another routine test at place of installation is not required; fault explained in Figure-(a) could not be detected.



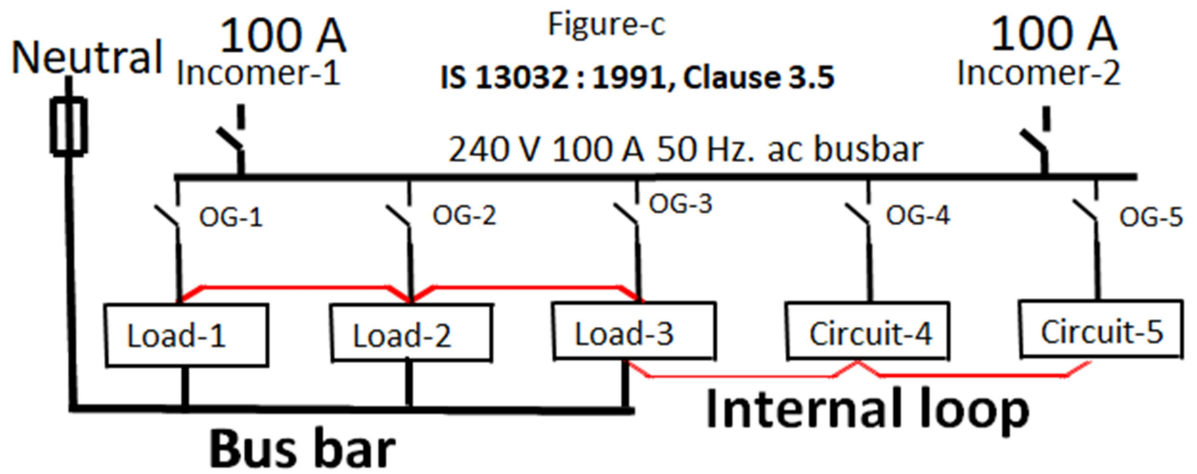
2. Another routine test at place of installation is not required; fault explained in Figure-(b) could not be detected.



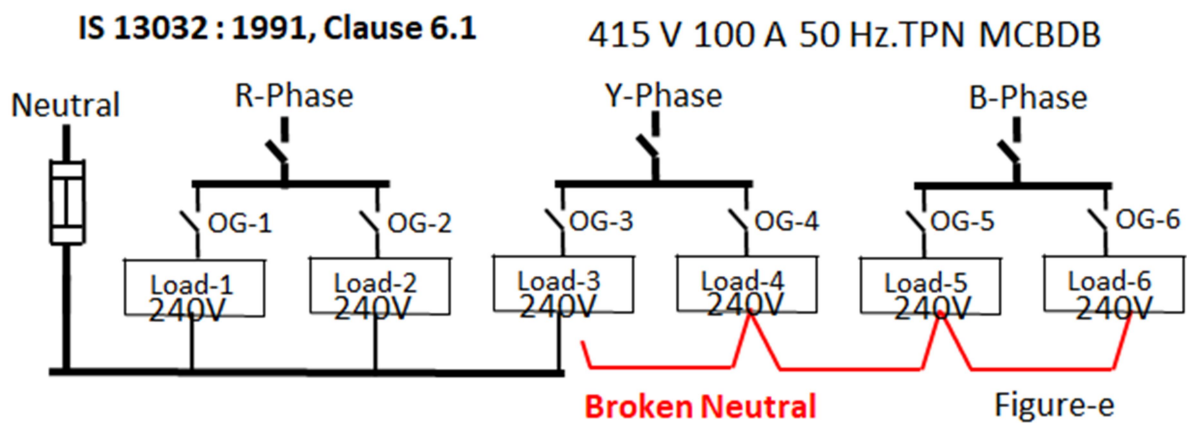
3. Another routine test at place of installation is not required; fault explained in Figure-(b2) could not be detected.



4. Another routine test at place of installation is not required; fault explained in Figure-(c) could not be detected.



5. Another routine test at place of installation is not required; fault explained in Figure-(e) could not be detected.



IS 13032 : 1991

Recommended Changes

(To be deleted shown with line and to be added shown bolded)

9.1.2 Routine Tests

Another routine test at place of installation is ~~not~~ required **for ensuring MCB, RCCB and circuit function test reports.**

IS 13032 : 1991 Clause 9.1.2 (after correction)

9.1.2 Routine Tests

Another routine test at place of installation is required **for ensuring MCB, RCCB and circuit function test reports.**