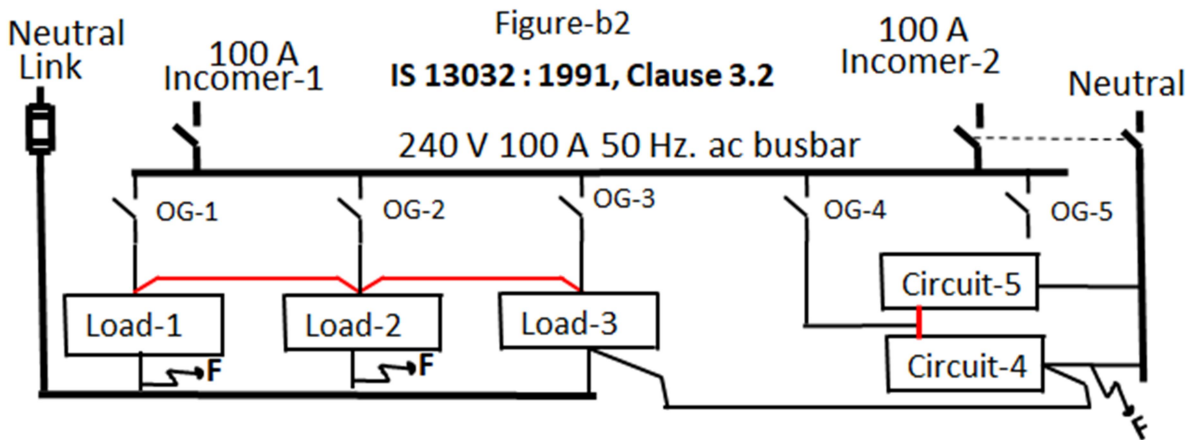


IV. IS 13032 : 1991 clause 3.2 MCB Way NOTES-1

“The neutral may or may not form part of the MCB way”.



1. The neutral may or may not form part of the MCB way (refer Figure-b2). This feature will not allow detecting and isolating a load side neutral earth fault and remain in service with heat rise in that faulted wire or load until a possible fire hazard.
2. The neutral may or may not form part of the MCB way (refer Figure-b2). The entire load/circuit side neutral's earth fault (refer Figure-b2) will remain in service for long duration until the combined leakage current reaching the main incomer earth fault trip level or not an undesired fire hazard could happen in that premise.
3. The neutral may or may not form part of the MCB way (refer Figure-b2). A single load neutral to earth fault current only will flow while switching in that load. If a neutral faulted load switched off, the share of fault current from that load will be zero until switching on it again. Likewise single or multiple load side neutral earth fault current will be shared by each switched in loads. It is possible to see that a load without any leakage in phase and neutral switched in, the incomer ELCB trip and create black out at premise. Immediately the user will switch out the last switched load and reset the ELCB to maintain power in the premise. This will continuously feed leakage current under the trip level and a possible fire hazard could expect in that premise.

IS 13032 : 1991

Recommended Changes

(To be deleted shown with line and to be added shown bolded)

3.2 MCB Way NOTES-1

The neutral ~~may or may not~~ **must** form part of the MCB way.

IS 13032 : 1991 Clause 3.2 MCB Way NOTES-1 (after correction)

3.2 MCB Way NOTES-1

The neutral **must** form part of the MCB way.