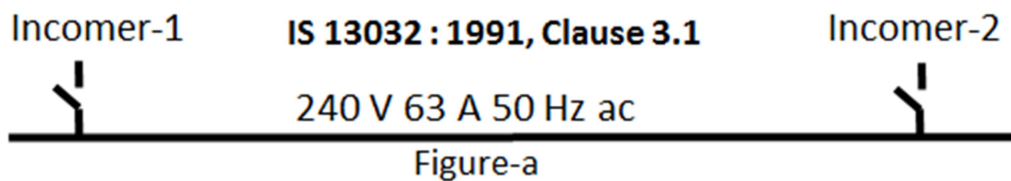


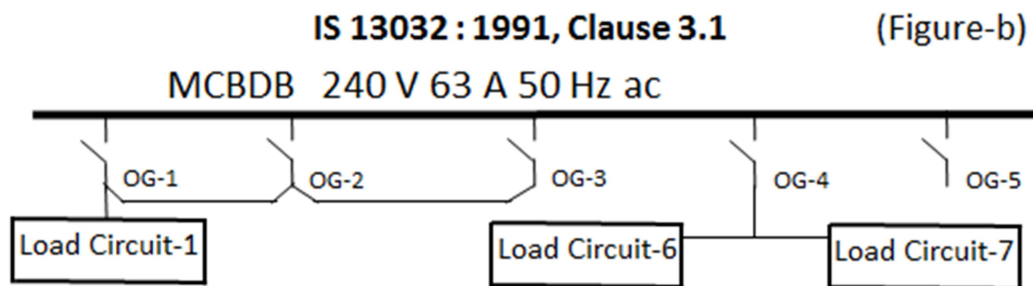
VIII. IS 13032 : 1991 clause 9.1.2 Routine Tests

“Routine tests are intended to detect faults in materials and workmanship. They are carried out on every new MCB board after its assembly or on each transport unit. **Another routine test at the place of installation is not required.**”

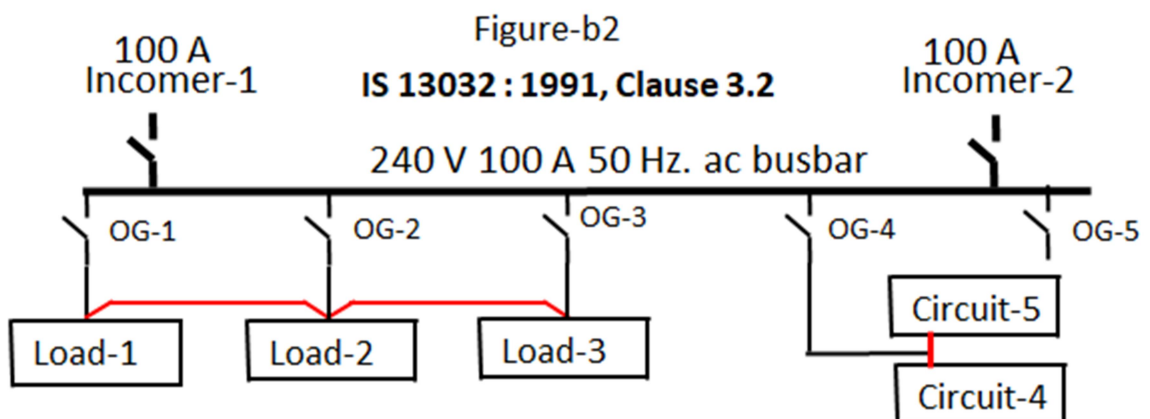
1. Another routine test at place of installation is not required; fault explained in Figure-(a) could not be detected.



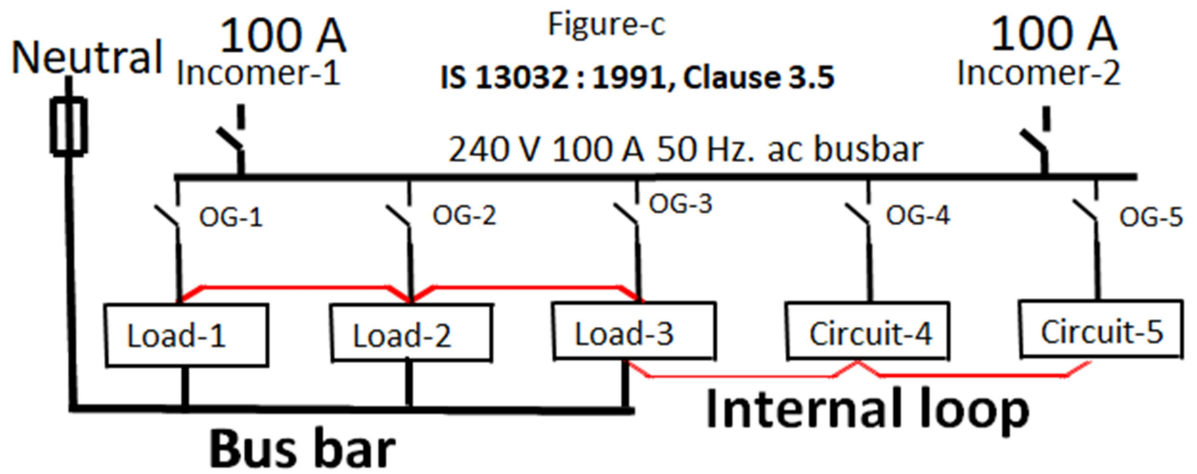
2. Another routine test at place of installation is not required; fault explained in Figure-(b) could not be detected.



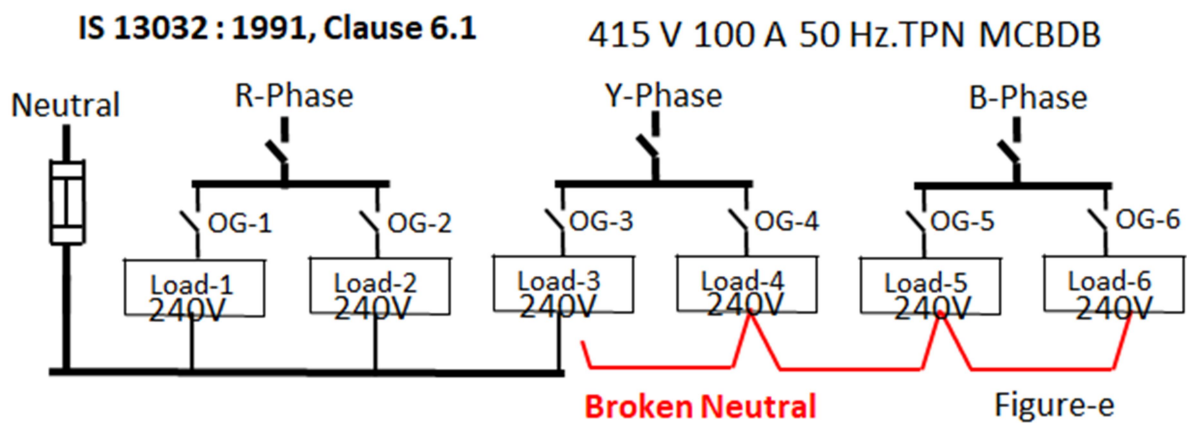
3. Another routine test at place of installation is not required; fault explained in Figure-(b2) could not be detected.



4. Another routine test at place of installation is not required; fault explained in Figure-(c) could not be detected.



5. Another routine test at place of installation is not required; fault explained in Figure-(e) could not be detected.



IS 13032 : 1991
Recommended Changes
(To be added shown bolded/underlined)

I. 3.1 Miniature Circuit- Breaker Board

An enclosure containing bus bars, miniature circuit-breaker (MCB) **and residual current circuit-breaker (RCCB)** for the purpose of protecting, controlling or connecting **each** outgoing circuit fed from one or more incoming circuits **through manual change over**. Miniature Circuit-Breaker Boards are also known as miniature Circuit-Breaker Distribution Boards (MCBDB) or MCB Boards.

II. 3.2 MCB Way

The part of the MCB board comprising a Miniature Circuit-Breaker **and residual current circuit-breaker (RCCB)** connected to **each** circuit.

III. 3.2 MCB Way NOTES-1

The neutral **must** form part of the MCB way.

IV. 3.5 Neutral of an MCB Board

Provided with terminals (and if required links) for connection to the neutral conductor of **each** outgoing and incoming circuit of distribution system.

V. 6.1 Preferred rated voltage

The preferred rated voltage **is 240 V for all out going and 240 V or 415 V for incoming.**

VI. 9.1.2 Routine Tests

Another routine test at place of installation is required for ensuring **MCB, RCCB and each circuit function test reports.**