

BUREAU OF INDIAN STANDARDS

DRAFT FOR COMMENTS ONLY

*(Not to be reproduced without permission of BIS or used as an Indian Standard)*

*भारतीय मानक मसौदा*

सड़क वाहन - संपीडित प्राकृतिक गैस (सीएनजी) / बायो -संपीडित प्राकृतिक गैस (बायो -  
सीएनजी) अंत कनेक्शन के साथ लचीली ईंधन लाइन [सीएनजी ईंधन लाइन का दबाव 2.15  
एमपीए (21.5 बार) से अधिक नहीं है]  
*(पहला पुनरीक्षण)*

*Draft Indian Standard*

**ROAD VEHICLES — COMPRESSED NATURAL GAS (CNG) / BIO- COMPRESSED  
NATURAL GAS (Bio- CNG) FLEXIBLE FUEL LINE WITH END CONNECTIONS  
[CNG FUEL LINE HAVING PRESSURE NOT EXCEEDING 2.15MPa (21.5 BAR)]**  
*(First Revision)*

ICS: 43.060.40

---

Not to be reproduced without permission  
of BIS or used as standard

Last date for receipt of comments  
is XX/XX/XXXX

---

© BIS 2023  
BUREAU OF INDIAN STANDARDS  
MANAK BHAVAN, 9 BAHADUR SHAH ZAFAR MARG  
NEW DELHI 110002

Automotive Vehicles Running on Non-Conventional Energy Sources Sectional Committee,  
TED 26

## FOREWORD

*(Formal Clause to be added later)*

This draft standard was first published in 2006 to specify definitions, test methods and requirements of CNG low-pressure flexible fuel line with end connections of CNG onboard fuel system component having service pressure not exceeding 2.15 MPa (21.5 Bar), intended for use on motor vehicles defined in IS 14272. This version of the standard incorporates the content of the amendment issued to the standard in 2012. In this Revision, Bio- CNG is also added to the scope of this draft standard keeping in view the technological advancements that have taken place since its last Publication.

In the formulation of this draft standard considerable assistance has been derived from the following AIS Standards issued by the Automotive Research Association of India:

AIS 024(Rev.1) (Part A):- Safety and Procedural Requirements for Type Approval of Gaseous Fuelled Vehicles - Part A (Automotive Application).

AIS 024(Rev.1) (Part B):- Safety and Procedural Requirements for Type Approval of Gaseous Fuel Agricultural Tractors - Part B (Agricultural Tractors Application).

AIS 024(Rev.1) (Part C):- Safety and Procedural Requirements for Type Approval of Gaseous Fuel Vehicles - Part C (CEV's Application).

AIS 028(Rev.1) (Part A): - Code of Practice for Use of Gaseous Fuels in Internal Combustion Engine Vehicles - Part A (Automotive Application)

AIS 028(Rev.1) (Part B): - Code of Practice for Use of Gaseous Fuels in Internal Combustion Engine Agricultural Tractors - Part B (Agricultural Tractors Application)

AIS 028(Rev.1) (Part C): - Code of Practice for Use of Gaseous Fuels in Internal Combustion Engine Construction Equipment Vehicles (CEV's) - Part C (CEV's Application).

SAE J30: 1998 — Fuel and oil hoses

This draft standard is one of the series of Indian Standards published on CNG/Bio-CNG onboard fuel system components. Other standards in the series are:

<i>IS No.</i>	<i>Title</i>
15710: XXXX <sup>1)</sup>	Road vehicles - Compressed natural gas (CNG) /Bio-Compressed natural gas (Bio-CNG) fuel system components – General requirements & definition.

15711: XXXX <sup>1)</sup>	Road vehicles - Compressed natural gas (CNG) /Bio-Compressed natural gas (Bio-CNG) fuel system components –Performance and general test methods
15712: XXXX <sup>1)</sup>	Road vehicles - Compressed natural gas (CNG) /Bio-Compressed natural gas (Bio-CNG) fuel system components – Automatic valve
15713: XXXX <sup>1)</sup>	Road vehicles - Compressed natural gas (CNG) /Bio-Compressed natural gas (Bio-CNG) fuel system components – Pressure regulator
15714: XXXX <sup>1)</sup>	Road vehicles - Compressed natural gas (CNG) /Bio-Compressed natural gas (Bio-CNG) fuel system components – Gas Air mixer
15715: XXXX <sup>1)</sup>	Road vehicles - Compressed natural gas (CNG) /Bio-Compressed natural gas (Bio-CNG) / Liquefied Petroleum Gas (LPG) Fuel system components – CNG/Bio-CNG/LPG Conduit (Ventilation Hose/Pipe)
15716: XXXX <sup>1)</sup>	Road vehicles - Compressed natural gas (CNG) /Bio-Compressed natural gas (Bio-CNG) fuel system components –CNG / Bio-CNG high pressure fuel line (rigid) with end connections (having pressure exceeding 2.15 MPa)
15717: XXXX <sup>1)</sup>	Road vehicles - Compressed natural gas (CNG) /Bio-Compressed natural gas (Bio-CNG) / Liquefied Petroleum Gas (LPG) Fuel system components – Petrol valve (Automatic/Manual)
15718: XXXX <sup>1)</sup>	Road vehicles - Compressed natural gas (CNG) /Bio-Compressed natural gas (Bio-CNG) fuel system components – CNG/Bio-CNG high Pressure fuel line(flexible hose)with end connections (having pressure exceeding 2.15 MPa)
15719: XXXX <sup>1)</sup>	Road vehicles - Compressed natural gas (CNG) /Bio-Compressed natural gas (Bio-CNG)/ Liquefied Petroleum Gas (LPG) fuel system components – Electrical Wiring kit
15720: XXXX <sup>1)</sup>	Road vehicles - Compressed natural gas (CNG) /Bio-Compressed natural gas (Bio-CNG) /Liquefied Petroleum Gas (LPG) fuel system component – Compartments sub- Compartments
15721: XXXX <sup>1)</sup>	Road vehicles - Compressed natural gas (CNG) / Bio-Compressed natural gas (Bio-CNG)/ Liquefied Petroleum Gas (LPG) fuel system components – Fire retardant material for seat, upholstery, roof and side lining
15723: XXXX <sup>1)</sup>	Road vehicles - Compressed natural gas (CNG) /Bio-Compressed natural gas (Bio-CNG) /Liquefied Petroleum Gas (LPG) fuel system components – Current Limiting devices

NOTE – Standards Marked with superscript ‘1)’ are under the process of Revision. The year of publication of these standards will be updated at the time of printing of this draft standard.

The composition of the Committee responsible for the formulation of this draft standard is given at Annex A (Will be added later).

For the purpose of deciding whether a particular requirement of this draft standard is complied with, the final value, observed or calculated, expressing the result of a test or analysis shall be rounded off in accordance with IS 2: 1960 'Rules for rounding off numerical values (revised)'. The number of significant places retained in the rounded off value should be the same as that of the specified value in this draft standard.

*Draft Indian Standard***ROAD VEHICLES — COMPRESSED NATURAL GAS (CNG) / BIO- COMPRESSED NATURAL GAS (Bio- CNG) FLEXIBLE FUEL LINE WITH END CONNECTIONS [CNG FUEL LINE HAVING PRESSURE NOT EXCEEDING 2.15MPa (21.5 BAR)]****1 SCOPE**

**1.1** This **draft** standard specifies definitions, test methods and requirements of CNG / Bio- CNG flexible fuel line with end connection of CNG / Bio- CNG onboard fuel system component having service pressure not exceeding 2.15 MPa (21.5 Bar), intended for use on motor vehicles defined in IS 14272.

**1.1.1** This **draft** standard is applicable to CNG / Bio- CNG fuel system components intended to be used on vehicles using compressed natural gas / Bio- compressed natural gas in accordance with IS 15320 Part 1 (mono-fuel or bi-fuel applications or dual fuel applications).

**1.1.2** This **draft** standard is not applicable to the following:

- a) Liquefied natural gas (LNG) fuel system components located upstream of, and including, the vaporizer;
- b) Fuel containers;
- c) Stationary gas engines; and
- d) CNG / Bio- CNG fuel systems components for the propulsion of marine craft.
- e) Hydrogen Natural Gas Blend (HCNG) Fuel system components

**1.1.3** This **draft** standard is based upon a service pressure for compressed natural gas / Bio-compressed natural gas as a fuel at 20 MPa (200 Bar) settled at 15°C. Other service pressures could be accommodated by adjusting the pressure by the appropriate factor (ratio). For example, a 25 MPa (250 Bar) service pressure system will require pressures to be multiplied by 1.25. All references to pressure are to be considered gauge pressures unless otherwise specified.

**2 REFERENCES**

The following standards contain provisions which, through reference in this text, constitute provisions of this draft standard. At the time of publication the editions indicated were valid. All standards are subject to revision and parties to agreements based on this draft standard are encouraged to investigate the possibility of applying the most recent editions of the standards indicated below:

<i>IS No.</i>	<i>Title</i>
IS 3400 : Part 1: 2021/ ISO 37 : 2017	Methods of Test for Vulcanized Rubber Part 1 Tensile Stress-Strain Properties
IS 3400 : Part 4: 2012/ ISO188 : 2011	Methods of test for vulcanized rubber: Part 4 accelerated ageing and heat resistance (Third Revision)

IS 3400 : Part 6: 2018/ ISO1817: 2015	Methods of Test for Vulcanized Rubbers Part 6 Determination of the Effect of Liquids (Fourth Revision)
IS 3400 : Part 20: 2018/ ISO1431-1: 2012	Methods of Test for Vulcanized Rubbers - Part 20 : Resistance to Ozone Cracking - Static Strain Test (Second Revision)
IS 14272: 2011	Automotive Vehicles — Types — Terminology
IS 15710: XXXX <sup>2)</sup>	Road vehicles - Compressed Natural Gas (CNG) / Bio-Compressed Natural Gas (Bio-CNG) fuel system components – General requirements and definitions
IS 15711: XXXX <sup>2)</sup>	Road vehicles — Compressed Natural Gas (CNG) / Bio- Compressed Natural Gas (Bio-CNG) fuel system components — Performance and general test methods

NOTE — Standards Marked with superscript '2)' are under the process of Revision. The year of publication of these standards will be updated at the time of printing of this draft standard.

### 3 DEFINITIONS

For the purpose of this draft standard definitions given in IS 15710 shall apply.

### 4 CLASSIFICATION

4.1 CNG/Bio-CNG flexible fuel lines are classified into following three classes:

- a) Class 1— Hose suitable for use in temperature up to 100°C;
- b) Class 2— Hose suitable for use in temperature up to 125°C; and
- c) Class 3 — Hose suitable for use in temperature up to 150°C intermittently and 135°C continuously.

4.2 Depending upon the service pressure the pipes are classified into following two types:

- a) Type 1— Hose having service pressure not exceeding 100 kPa (1 bar); and
- b) Type 2 — Hose having service pressure exceeding 100 kPa (1 bar) and less than 2.15MPa (21.5 bar).

### 5 REQUIREMENTS OF CNG / Bio-CNG FLEXIBLE FUEL LINE

#### 5.1 Hydrostatic Strength

Flexible fuel line shall be tested for hydrostatic strength test as per *Clause 5* of IS 15711. Test pressure shall be 4 times of the working pressure.

#### 5.2 Vacuum Collapse Test

Hoses having sizes less than 12.70 mm ID shall be subjected to 81 kPa vacuum. Size 12.70 mm to 25.40 mm ID shall be subjected to 34 kPa vacuum. This requirement shall not apply to sizes larger than 25.40 mm ID. During the vacuum test a 915 mm length of hose assembly shall be held in a straight line, and diameter shall not decrease by more than 20 percent during

application of vacuum for a minimum of 15 s and not more than 30s. The vacuum collapse test shall be performed on the finished parts.

### 5.3 Cold Flexibility

For straight hose 19.05 mm ID and under, two samples of whole hose shall be used. One sample shall be immersed in Oil No. 3 [see IS 3400 (Part 6)] for 70 h at required temperature (see Tables 1 to 3) and one shall be used as unaged. The unaged sample shall be conditioned at  $-40 \pm 2^\circ\text{C}$  for 5 h and then flexed in cold chamber through  $180^\circ$  from centreline to a diameter of 10 times the maximum OD of hose. The aged sample shall be conditioned at required temperature (see Tables 1 to 3) for 5 h and then shall be flexed in cold chamber through  $180^\circ$  from centreline to a diameter of 10 times the maximum OD of hose. The flexing shall take place within 4 s and the hose shall not fracture or show any cracks, checks, and breaks in tube or cover. Proof pressure of 0.68 MPa may be applied to determine tube damage.

For straight hose above 19.05 mm ID and all preformed hose, six specimens of 100 x 6 mm from whole hose wall shall be prepared. One set of 3 shall be unaged and other shall be aged in Oil No. 3 [see IS 3400 (Part 6)] for 70 h at required temperature (see Tables 1 to 3). The unaged set shall be conditioned at  $-40 \pm 2^\circ\text{C}$  for 5 h in an unrestrained loop positioned between 2 jaws 50.8 mm wide and 63.5 mm apart. The aged samples shall be conditioned for 5 h at required cold temperature (see Tables 1 to 3) in an unrestrained loop positioned between two jaws 50.8 mm wide and 63.5 mm apart.

While still in cold chamber, the jaws shall be brought together as rapidly as possible until 25.40 mm apart. The specimens shall not fracture nor show any cracks, checks, or breaks.

### 5.4 Tensile Strength and Elongation

When tested as per IS 3400 (Part 1) tensile strength and elongation at break on tube and cover of hose shall be as given below:

Tensile strength of cover:	7.0 MPa, Min
Tensile strength of tube:	8.0 MPa, Min
Elongation at break of tube and cover:	200 percent, Min

### 5.5 Dry Heat Resistance

When tested for resistance to dry heat of tube (lining) and cover as per IS 3400 (Part 4) with conditions and requirements specified in Tables 1 to 3 for 70 h, the reduction in tensile strength and elongation of specimens taken from the tube and cover shall not exceed the values as shown in Tables 1 to 3.

### 5.6 Fuel Resistance

After 48 h immersion at room temperature,  $23 \pm 2^\circ\text{C}$  in reference fuel C (50 Toluene –50 iso-octane percent by volume), physical values of specimens taken from the tube shall not exceed the change in values listed in Tables 1 to 3.

### 5.7 Oil Resistance

When tested as per IS 3400 (Part 6) for 70 h immersion at the required temperature (see Tables

1 to 3) in Oil No. 3, physical values of specimens taken from the tube and cover shall not exceed the values listed in Tables 1 to 3.

## 5.8 Test for Extractable in Hose

### 5.8.1 Apparatus and Reagents

- Reference Fuel C (50 Toluene –50 isooctane percent by volume),
- Methanol 99 percent minimum purity,
- Gooch crucible,
- Glass fibre filter, Grade 934 AH,
- Beaker,
- Heating unit, and
- Metal control rod and end plugs (*see* Fig. 1 and Table 4).

**Table 1 Requirements for CNG/Bio-CNG Flexible Fuel Lines (Class 1)**  
(Clauses 5.3, 5.5, 5.6, 5.7, 5.8.3 and 5.12)

Sl No.	Specification (1)		Cold Flex (2)	Dry Heat Resistance (3)	Fuel Resistance (4)	Oil Resistance (5)	Extractable g/m <sup>2</sup> (6)	Permeation Max Rate / 24h (7)
i)	Ageing Temperature, °C		100	100	23	100	–	–
ii)	Cold Temperature, °C		-34	–	–	–	–	–
iii)	Tube	Tensile Change, percent	–	-20	-45	-40	–	–
		Elongation Change, percent	–	-50	-45	-40	–	–
		Volume change, percent	–	–	0 to +50	-5 to +25	–	–
iv)	Cover	Tensile Change, percent	–	-20	–	–	–	–
		Elongation Change, percent	–	-50	–	–	–	–
		Volume change, percent	–	–	–	0 to +100	–	–
		Extractable	–	–	–	–	7.75	–
		Permeation Fuel C, 8 Days total, g/m <sup>2</sup>	–	–	–	–	–	600

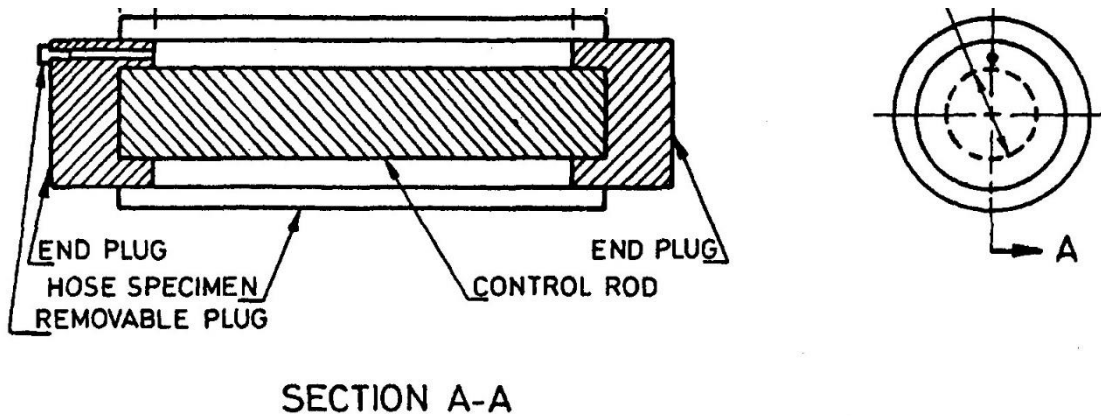


**Table 2 Requirements for CNG /Bio-CNG Flexible Fuel Lines (Class 2)**  
(Clauses 5.3, 5.5, 5.6, 5.7, 5.8.3 and 5.12)

Sl No.	Specification (1)	Cold Flex (2)	Dry Heat Resistance (3)	Fuel Resistance (4)	Oil Resistance (5)	Extractable g/m2 (6)	Permeation Max Rate / 24h (7)	
i)	Ageing Temperature, °C	125	125	23	125	–	–	
ii)	Cold Temperature, °C	-34	–	–	–	–	–	
iii)	Tube	Tensile Change, percent	–	-20	-45	-50	–	–
		Elongation Change, percent	–	-60	-45	-50	–	–
		Volume change, percent	–	–	0 to +50	-5 to +30	–	–
iv)	Cover	Tensile Change, percent	–	–	–	–	–	550
		Elongation Change, percent	–	60	–	–	–	–
		Volume change, percent	–	–	–	0 to +75	–	–
		Extractable	–	–	–	–	5.00	–
		Permeation – Fuel C, 8 Days total, g/m2	–	–	–	–	–	550

**Table 3 Requirements for CNG / Bio-CNG Flexible Fuel Lines (Class 3)**  
(Clauses 5.3, 5.5, 5.6, 5.7, 5.8.3 and 5.12)

Sl No.	Specification (1)	Cold Flex (2)	Dry Heat Resistance (3)	Fuel Resistance (4)	Oil Resistance (5)	Extractable g/m2 (6)	Permeation Max Rate / 24h (7)	
i)	Ageing Temperature, °C	150	150	23	150	–	–	
ii)	Cold Temperature, °C	-40	–	–	–	–	–	
iii)	Tube	Tensile Change, percent	–	-25	-35	-20	–	–
		Elongation Change, percent	–	-50	-35	-50	–	–
		Volume change, percent	–	--	0 to +35	-5 to +15	–	–
iv)	Cover	Tensile Change, percent	–	-25	–	–	–	–
		Elongation Change, percent	–	-50	–	–	–	–
		Volume change, percent	–	–	–	0 to +15	–	–
		Extractable	–	–	–	–	2.50	–
		Permeation – Fuel C, 8 Days total, g/m2	–	–	–	–	–	200



All dimensions in millimetres

Fig.1 Metal control rod and end plates

**Table 4 Control Rod Dimensions**  
[Clause 5.8.1(g)]

Sl. No. (1)	Hose Size (Nominal ID) mm (2)	Control Rod Diameter mm (3)
i)	Below 19.05	N/A
ii)	19.05	7.8
iii)	25.40	15.5
iv)	31.75	22.4
v)	34.92	25.9
vi)	38.10	29.1
vii)	44.45	35.6
viii)	50.80	42.1
ix)	57.35	48.6
x)	63.50	55.0

### 5.8.2 Specimens

Hose under test shall be 300 mm long plugged at both ends with metal, aluminium or steel, plugs to retain the fluid. Calculate inside surface area based on the actual inside diameter of the hose for its total effective length.

#### NOTES —

- 1) Total effective length of hose with end plugs inserted shall be 275 mm; and
- 2) A round metal (aluminium or steel) control rod conforming to the dimensions shown in Table 4 for hose sizes 19.05 mm ID and larger shall be inserted into hose ID as shown in Fig. 1. The rod shall be positioned in the end plugs that it will not contact the hose ID.

### 5.8.3 Procedure

- a) Record hose actual inside diameter, length and inside surface area. Preferred method is

- with plug ID gauges to nearest 0.025 mm.
- b) Fill hose with reference fuel C.
  - c) Allow to stand for 24 h at temperature of  $23 \pm 2^\circ\text{C}$  with both ends sealed.
  - d) Drain fluid from hose into a tared beaker.
  - e) Rinse inside of the specimen with an amount of fish reference fuel C approximately equal to the volume of the original filling and add to the original extraction.
  - f) Remove solvent by evaporation by heating at  $80^\circ\text{C}$  to  $95^\circ\text{C}$  until no fuel odour is detectable and then store sample at room temperature of  $23 \pm 2^\circ\text{C}$  under a fume hood for a minimum of 16 h.
  - g) Take up residue with 30 ml of room temperature,  $23 \pm 2^\circ\text{C}$  methanol.
  - h) Filter this solution on the tared crucible, rinsing beaker twice with 10 ml of room temperature,  $23 \pm 2^\circ\text{C}$  methanol.
  - j) Place crucible in beaker and dry in a  $65^\circ\text{C}$  to  $90^\circ\text{C}$  oven to insure complete evaporation of methanol.
  - k) Weigh the gooch crucible and tared beaker and determine mass of extractable expressed as  $\text{g/m}^2$  using surface area of hose in contact with reference fuel C.
  - m) Value of total  $\text{g/m}^2$  shall be values shown in Tables 1 to 3.

NOTE — Solubility of waxy hydrocarbons is affected by temperature.

### 5.9 Ozone Resistance Test

The test shall be carried out in accordance with IS 3400 (Part 20).

For straight hose, 25.40 mm ID and under, a specimen of hose of sufficient length shall be bent around a mandrel with OD 8 times the nominal OD of the specimen. The two ends shall be tied at their crossing with enamelled copper or aluminium wire. After mounting, the specimen shall be allowed to rest in an ozone free atmosphere for 24 h at room temperature of  $23 \pm 2^\circ\text{C}$ . The mounted specimen shall be placed in a test chamber with ozone concentration of  $100 \pm 5$  MPa at a temperature of  $40 \pm 2^\circ\text{C}$ . After 70 h of exposure, the specimen shall be removed and allowed to cool to a temperature of  $23 \pm 2^\circ\text{C}$  and then inspected. The specimen shall be visually inspected under 7 x magnification and must meet '0' rating except for the area immediate adjacent to the wire, which shall be ignored. For hoses over 25.40 mm ID and preformed parts, prepare a specimen by cutting a strip of whole hose 12.70 mm wide by 100 mm long and tie the specimen (cover out) around a 12.70 mm diameter mandrel. Condition in the same manner as for whole hose and apply the same requirements. The test applies to the cover only and cracks in the exposed tube or cut edges of the cover shall be ignored.

### 5.10 Adhesion Test

The minimum load required to separate a 25.40 mm width of tube and cover shall be 27 N.

### 5.11 Kink Resistance Test

When tested to the following procedure, a ball having a diameter equal to half the nominal inside diameter of the hose shall pass freely through the hose. Use fixture consisting of a 19 mm thick board or plate with holes and centre distances shown in Table 5.

Condition a 300 mm long specimen of hose for 2 h at room temperature,  $23 \pm 2^\circ\text{C}$ . Insert one end of hose into board with end flush with opposite side of the board. Carefully bend hose along its natural curvature and insert the other end carefully into the second hole until it projects 63 mm out the other side.

After hose has been in this position for 5 min, insert a steel ball having a diameter equal to half the hose nominal ID. The ball must pass freely from one end to the other.

**Table 5 Kink Resistance**

Sl. No.	Nominal Hose ID mm	Hole Center Distance mm	Hole Diameter mm
(1)	(2)	(3)	(4)
i)	4.76	12.7	12.7
ii)	6.35	19.0	14.3
iii)	7.94	25.4	15.9
iv)	9.53	76.2	19.0
v)	12.70	127.0	23.0

## 5.12 Rate of Fuel Permeation

A hose of free length of 1 m shall be connected to a container filled with fuel C having a temperature of  $23 \pm 2^\circ\text{C}$ . The test shall be carried out in compliance with the reservoir method described in *clause 5.12.1*. The hose shall meet the limits listed in Tables 1 to 3.

### 5.12.1 Unified Method for Hose Permeation

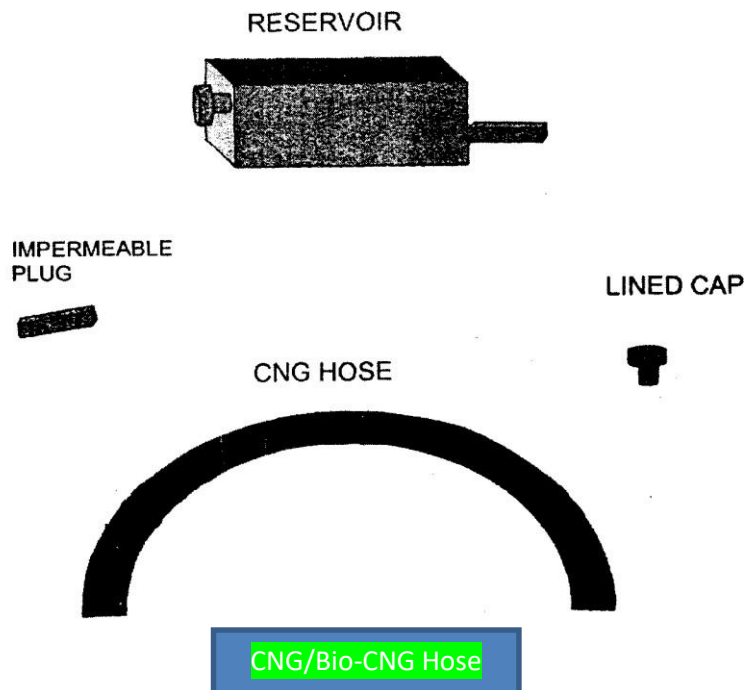
#### 5.12.1.1 Rate of fuel permeation

Hoses tested by the reservoir method shall meet those limits listed in Tables 1 to 3 when tested with reference fuel C. Exposure of these hoses to gasoline or diesel fuel which contain high levels, greater than 5 percent by volume, of oxygenates, that is, ethanol, methanol, or MTBE (methyl tertiary butyl ether), may result in significantly higher permeation rates than those listed in Tables 1 to 3.

- a) *Reservoir units (see Table 6 for size of reservoir)* — A screw-top can may be modified by the addition of a standard hose nipple, or fitting, cold soldered into the base at the corner opposite its opening (see Fig. 2 for typical equipment). Other types of reservoir units may be used. Examples are cylindrical aluminium and steel containers with appropriate standard hose nipples at one end, and a fill opening if required at the other end. The materials used for construction of the reservoirs shall be compatible with the test fuel.
- b) *Screw cap* — A metal foil or fluoroelastomer-lined cap to seal the reservoir unit. Where the threaded fill opening is designed to seal with an O-ring, a fluoroelastomer O-ring shall be used. The threaded till opening may be either a female or male thread and sealed with a threaded male plug or female cap.
- c) *Scale or balance* — A weighing unit with sufficient capacity to weigh the filled assemblies, and with a resolution of  $\pm 0.01$  g.
- d) *Impermeable plug* — An impermeable plug of sufficient size to seal one end of hose to a depth of 25 mm.
- e) *Hose clamps* — Standard hose clamps of the correct size for the hose being tested.

### 5.12.2 Procedure

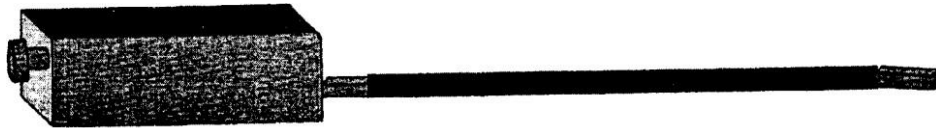
- a) Cut hose to the required length (active length plus the fitting lengths), (*see* Table 6).
- b) Measure the inside diameter of the hose and record in mm.
- c) Plug one end of hose to the required depth using an impermeable plug and hose clamp.
- d) Attach the other end of hose to the fitting on the reservoir and clamp.
- e) Measure the active or exposed length of the installed hose in mm and record.
- f) Fill the reservoir with the specified amount (*see* Table 6) of desired fuel blend.
- g) Seal reservoir with cap or plug.
- h) Weigh reservoir assembly to the nearest 0.01 g and record.
- j) To insure complete filling of the hose, orient assembly vertically and gently tap hose to eliminate the possibility of trapped air in the hose (*see* Fig. 3).
- k) Place assembly with the hose horizontal in its storage position for liquid permeation (*see* Fig. 4).
- m) Weigh the assembly each  $24 \pm 0.5$  h for the required time interval and record each value.
- n) After each weighing, invert assembly to drain hose, gently mix fuel and refill hose as in step 'j)' and replace in storage position.
- p) Calculate the exposed tube area (A) in  $m^2$ :
 
$$A = L \text{ (mm)} \times ID \text{ (mm)} \times 3.14 \times 10^{-6}$$
- q) Calculate the rate of fuel permeation in terms of g/ $m^2/24$  h of exposed tube area on daily basis.



**Fig. 2 Fuel Permeation Test Apparatus**



**Fig. 3 Fuel Permeation Test- Air Bubble Removal**



**Fig. 4 Fuel Permeation Reservoir Test Assembly**

**Table 6 Test Piece Size Parameters**  
 [Clauses 5.12.1.1(a) and 5.12.2(a)]

SL. No. (1)	Inside Diameter of Test Hose mm (2)	Active Length of Test Hose mm (3)	Reservoir Size ml (4)	Fuel Fill Amount ml (5)
i)	≤16.0	300	460 - 490	300
ii)	>16.0 to 25.0	300	940 - 1000	750
iii)	>25.0 to 32.0	300	3750 - 4000	2500
iv)	>32.0	150	3750 - 4000	2500

NOTES —

- 1) Storage location should be temperature controlled to  $23 \pm 2^\circ\text{C}$  with free-flowing air to prevent fume build-up; and
- 2) If weekend weighing are to be eliminated and the results averaged for the weekends, then the test must be started on a Monday.

## 6 MARKING

**6.1** Each flexible fuel line shall be legibly and indelibly marked with the following at every 300 mm length:

- a) Manufactures name, trade-mark or symbol;
- b) Part No. or unique identification mark;
- c) Type and class;
- d) Size;
- e) Working pressure;
- f) Batch number; and
- g) CNG/Bio-CNG

### 6.2 BIS Certification Marking

Each flexible hose assembly may also be marked with the Standard Mark.

**6.2.1** The provisions of the *Bureau of Indian Standards Act, 2016*, govern the use of the Standard Mark and the Rules and Regulations made thereunder. The details of conditions under which the licence for the use of the Standard Mark may be granted to manufacturers or producers may be obtained from the Bureau of Indian Standards.

## 7 TYPE TEST (TYPE APPROVAL)

For the purpose of type test CNG/Bio-CNG fuel lines of a particular Type/Class shall conform to all the test requirements as specified in this draft standard.

## 8 ACCEPTANCE TEST (CONFORMITY OF PRODUCTION)

CNG/Bio-CNG fuel line approved under this draft standard shall be so manufactured as to conform following test requirements as specified in relevant clauses of this draft standard.

- a) Burst test;
- b) Ozone resistance test;
- c) Cold flexibility test;
- d) Adhesion test; and
- e) Rate of fuel permeation.

## 9 TECHNICAL INFORMATION TO BE SUBMITTED BY THE COMPONENT MANUFACTURER

Technical information to be submitted by the component manufacturer for component type approval/type test shall contain at least following information:

- a) Name of the hose manufacturer;
- b) Manufacturing plant address;
- c) Part number;
- d) Type and class of pipe (*see 4*);
- e) Hose inner diameter (ID);
- f) Hose outer diameter (OD);
- g) Working pressure; and

h) Drawings with relevant dimensions and materials.

**10 NUMBER OF SAMPLES FOR TESTING**

Minimum 8 numbers of 500 mm length hose with end connections having preferably BSP threading shall be submitted to the test agency for testing.



**ANNEX A**  
*(Foreword)*

**COMMITTEE COMPOSITION**

**AUTOMOTIVE VEHICLES RUNNING ON NON-CONVENTIONAL ENERGY SOURCES  
SECTIONAL COMMITTEE, TED 26**

**Will be Added Later.**