

BUREAU OF INDIAN STANDARDS

DRAFT FOR COMMENTS ONLY

(Not to be reproduced without permission of BIS or used as an Indian Standard)

भारतीय मानक मसौदा
डेंटल कैंची, सीधी और घुमावदार — विशिष्टि
[IS 5211 का पहला पुनरीक्षण]

Draft Indian Standard
Dental Scissors, Straight and Curved — Specification
[First Revision of IS 5211]

[ICS 11.060.20]

Dentistry Sectional Committee, MHD 08

Last date for comments:
06 September 2024

FOREWORD

(Formal clause will be added later)

This standard was originally published in 1969 as 'Specification for Scissors, Dental No. 1, Straight and Curved on Flat'. This revision aligns the cross references to the latest standards, incorporates revised designations for steel and includes revised certification clause.

For the purpose of deciding whether a particular requirement of this standard is complied with the final value, observed or calculated, expressing the result of a test or analysis shall be rounded off in accordance with IS 2: 2022 'Rules for rounding off numerical values (*second revision*)'. The number of significant places retained in the rounded off value should be same as that of the specified value in this standard.

1 SCOPE

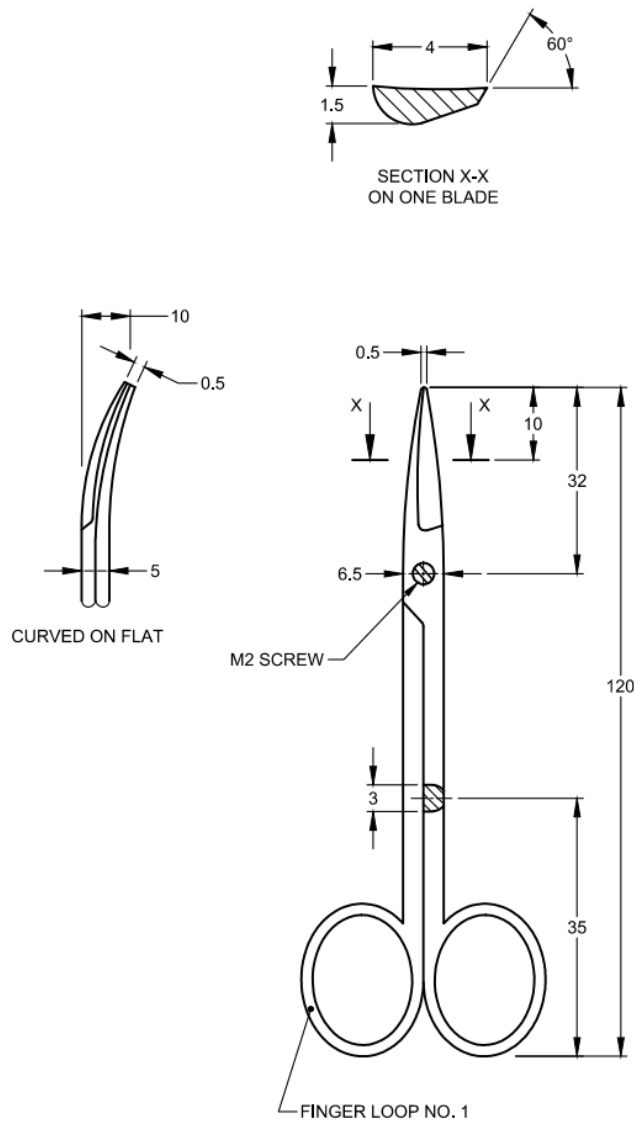
This standard specifies dimensions and requirements of dental scissors, No. 1, straight and curved on flat.

2 REFERENCES

The standards given below contain provisions which, through reference in this text, constitute provisions of this standard. At the time of publication, the editions indicated were valid. All standards are subject to revision, and parties to agreements based on this standard are encouraged to investigate the possibility of applying the most recent editions of these standards.

<i>IS No.</i>	<i>Title</i>
IS 4281 : 1967	Specification for Scissors, McIndoe's, For Plastic Surgery
IS 4218 (Part 1) : 2001/ISO 68-1 : 1998	ISO general purpose metric screw threads Part 1 Basic profile (<i>second revision</i>)
IS 3642 (Part 1): 1990	Surgical instruments – Specification Part 1 non - Cutting, articulated instruments (<i>Second Revision</i>)

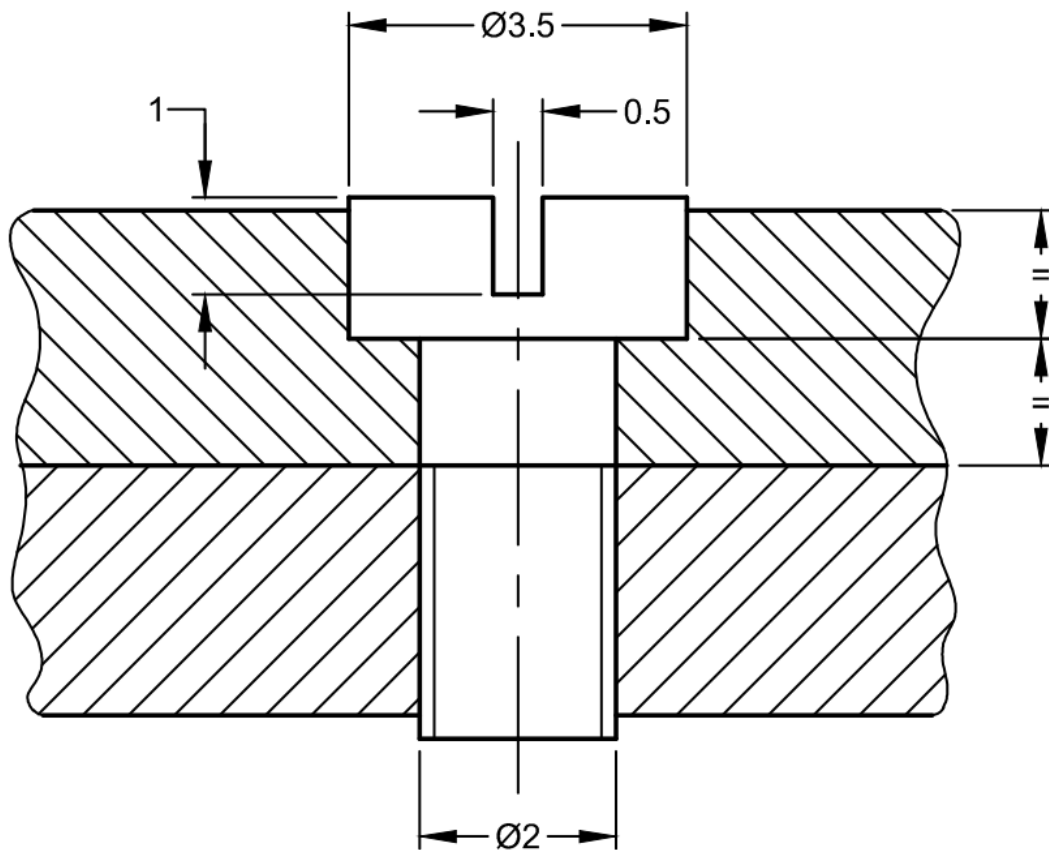
3 SHAPE AND DIMENSIONS



All dimensions in millimetres.

Fig. 1 Scissors, Dental, No. 1, Straight and Curved on Flat

3.1 The screw used shall be slotted raised cheese head pattern as shown in Fig. 2. The profile of the screw thread shall conform to IS 4218 (Part 1). The thread shall be of such length as to allow sufficient shank for proper bearing surface and to adequately secure component parts of the scissors with proper tension for cutting. The screw shall retain proper position after setting without binding or loosening during the use. The screw end may be left projecting up to 0.5 mm.



(M2 SCREW, PITCH 0.4)

All dimensions in millimetres.
Fig. 2 Detail of Screw Assembly

3.2 Finger Loop

The finger loop shall be properly shaped and size shall conform to Size No. 1 of 12 of Section 5 of IS 3642.

4 MATERIAL

The material shall be as given in 2 of IS 4281.

5 HARDNESS

The scissors shall be hardened and tempered to 550 to 600 HV.

6 TESTS

6.1 Performance

The performance test shall be done as given in 6.1 of IS 4281.

6.2 Corrosion Resistance

The corrosion testing shall be done as given in **6.4** of IS 4281.

7 MARKING

7.1 Each scissors shall be legibly and indelibly marked with the number of the instrument, manufacturer's name, initials or trade-mark, letters 'SS' and the country of manufacture.

7.2 BIS Certification Marking

The product(s) conforming to the requirements of this standard may be certified as per the conformity assessment schemes under the provisions of the *Bureau of Indian Standards Act, 2016* and the Rules and Regulations framed there under, and the product(s) may be marked with the Standard Mark.

8 PACKING

The packing shall be done as specified in **8** of IS 4281.