

**BUREAU OF INDIAN STANDARDS**

**DRAFT FOR COMMENTS ONLY**

*(Not to be reproduced without permission of BIS or used as an Indian Standard)*

---

भारतीय मानक मसौदा  
**ट्रैकियोस्टोमी ट्यूब और गाइड के लिए विशिष्टि, क्यूब्ली पैटर्न**  
*(First Revision of IS 10308)*

*Draft Indian Standard*

**Specification for Tracheostomy Tubes and Guides, Cubley's Pattern**  
*(First Revision of IS 10308)*

[ICS 11.040.30]

---

Ear, Nose, Throat, Head & Neck Surgery  
Instruments Sectional Committee, MHD 04

Last date for comments: **25 July, 2024**

---

FOREWORD

*(Formal clause will be added later)*

This standard was originally published in 1982. The First revision of this standard has been brought out to align it with recent developments and to bring the standard in line with the latest style and format of Indian Standards.

For the purpose of deciding whether a particular requirement of this standard is complied with the final value, observed or calculated, expressing the result of a test or analysis shall be rounded off in accordance with IS 2: 2022 'Rules for rounding off numerical values (*second revision*)'. The number of significant places retained in the rounded-off value should be same as that of the specified value in this standard.

*Indian Standard*  
**SPECIFICATION FOR TRACHEOSTOMY TUBES AND GUIDES,  
CUBLEY'S PATTERN**

## **1 SCOPE**

Covers dimensional and other requirements for Cubley's pattern tracheostomy tubes and guides used in ENT surgery.

## **2 REFERENCES**

The standards given below contain provisions which, through reference in this text, constitute provisions of this standard. At the time of publication, the editions indicated were valid. All standards are subject to revision, and parties to agreements based on this standard are encouraged to investigate the possibility of applying the most recent editions of these standards.

<i>IS No.</i>	<i>Title</i>
IS 2112 : 2014	Silver and Silver Alloys, Jewellery/ Artefacts — Fineness and Marking — Specification ( Third Revision )

## **3 SHAPE AND DIMENSIONS**

As shown in Fig, 1 and 2.

**3.1** The tolerances on various dimensions shall be:

- a)  $\pm 0.1$  mm for dimensions up to 10'0 mm;
- b)  $\pm 0.5$  mm for dimensions above 10-0 mm and up to 50'0 mm; and
- c)  $\pm 10$  mm for dimensions above 50.0 mm.

## **4 MATERIAL**

Silver alloy (92 percent Ag 8 percent Cu) conforming to IS: 2112.

## **5 WORKMANSHIP AND FINISH**

**5.1** The external surfaces shall be smooth, free from surface irregularities and shall be polished bright.

**5.2** The soldered surfaces shall be finished smooth.

**5.3** All edges shall be rounded and finished smooth.

**5.4** The inner tube shall fit snugly and smoothly in the outer tube,

**5.5** The guide shall have an olive shaped body, firmly and permanently attached to the distal end and a retaining device firmly and permanently attached to the proximal end.

**5.6** The guide shall fit smoothly in the outer tube

## **6 Marking**

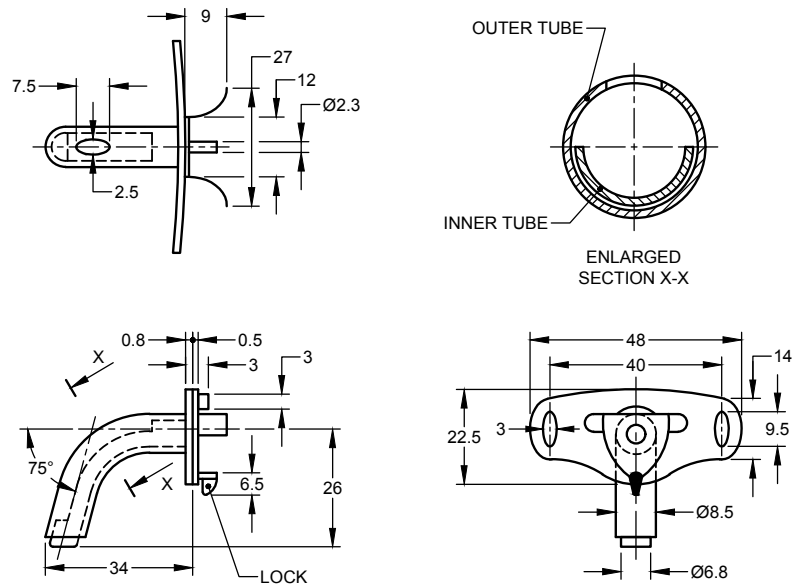
The tube and the guide shall be marked with the manufacturer's name, initials or recognized trademark and the country of manufacture.

## **7 BIS Certification Marking**

The product(s) conforming to the requirements of this standard may be certified as per the conformity assessment schemes under the provisions of the *Bureau of Indian Standards Act, 2016* and the Rules and Regulations framed thereunder, and the product(s) may be marked with the Standard Mark.

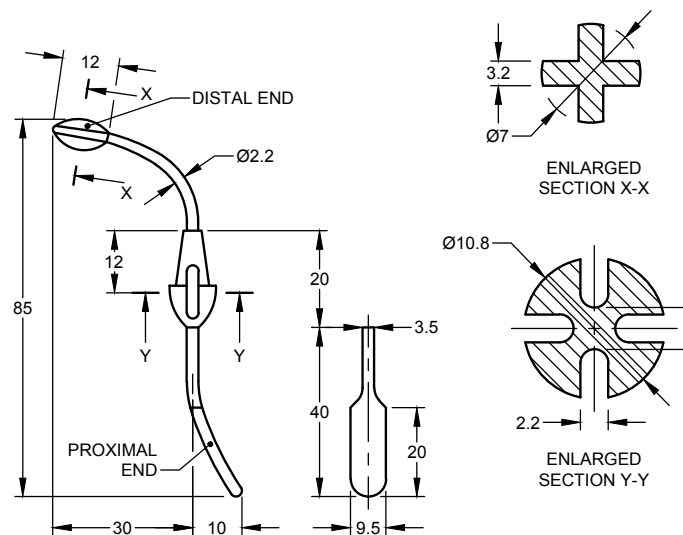
## **8 PACKING**

The tube and the guide shall be put individually in polyethylene bag and packed suitably in cardboard cartons. On the package of the product batch Number, Lot Number, and Serial Number shall be mentioned.



All dimensions in millimetres.

FIG. 1 TRACHEOSTOMY TUBE, CUBLEY'S PATTERN



All dimensions in millimetres.

FIG. 2 GUIDE FOR TRACHEOSTOMY TUBE, CUBLEY'S PATTERN