

**BUREAU OF INDIAN STANDARDS**

DRAFTS FOR COMMENTS ONLY

*(Not to be reproduced without permission of BIS or used as an Indian Standard)*

*Draft Indian Standard*

**RESPIRATORY PROTECTIVE DEVICES FOR SELF-RESCUE — FILTERING  
DEVICES WITH HOOD FOR ESCAPE FROM FIRE — SPECIFICATION**

(ICS 13.340.30)

Occupational Safety and Health Sectional  
Committee, CHD 8

**Last Date for Comments : 28<sup>th</sup> December, 2024**

Occupational Safety and Health Sectional Committee, CHD 08

FOREWORD

*(Formal clause will be added later)*

This standard refers to filtering devices with a hood for personal escape from particulate matter, carbon monoxide and other toxic gases produced by fire.

The escape hood typically consists of a filtering system and a hood that covers the entire head and neck, ensuring the user can breathe safely and navigate to safety

It specifies the minimum requirements for these single-use apparatuses. This standard does not apply to respiratory protective devices intended for use in situations where there could be an oxygen deficiency (less than 17% by volume)

In the preparation of this standard, considerable assistance has been derived from the following standard:

EN 403: 2004 Respiratory protective devices for self-rescue - Filtering devices with hood for self-rescue from fire - Requirements, testing, marking

A given respiratory protective device only be approved when the individual components satisfy the requirements of the specification which may be complete standard or part of a standard, and practical performance tests have been carried out successfully on complete devices where specified in the appropriate standard. If for any reason a complete device is not tested then simulation of the device is permitted provided the respiratory characteristics and mass distribution are similar to those of the complete device-

For the purpose of deciding whether a particular requirement of this standard is complied with, the final value, observed or calculated, expressing the result of a test or analysis, shall be rounded off in accordance with IS 2 : 2022 'Rules for rounding off numerical values (*second revision*)'. The number of significant places retained in the rounded off value should be the same as that of the specified value in this standard.

*Draft Indian Standard*

RESPIRATORY PROTECTIVE DEVICES FOR  
SELF-RESCUE — FILTERING DEVICES WITH HOOD FOR  
ESCAPE FROM FIRE — SPECIFICATION

**1 SCOPE**

**1.1** This standard specifies minimum requirements for filtering devices for self-rescue which is for single use. It does not cover devices designed for use in circumstances where there is might be an oxygen deficiency (Oxygen less than 17 percent by volume).

**1.2** Two types of devices are specified; namely those designed to be carried on the person and those designed to be stored.

**1.3** This standard specifies devices primarily designed for adult users. Some devices may not be suitable for children.

**1.4** Laboratory and practical performance tests are included for the assessment of compliance with requirements.

**2 REFERENCE**

The standards given in Annex A contain provisions which through reference in this text, constitute provisions of this standard. At the time of publication, the editions indicated were valid. All standards are subject to revision and parties to agreements based on this standard are encouraged to investigate the possibility of applying the most recent editions of the standards indicated in Annex A.

**3 TERMINOLOGY**

For the purposes of this Indian Standard, the terms and definitions given in IS 8347 shall apply.

**4 DESCRIPTION**

**4.1** A filtering device with a hood for self- rescue from fire (filtering smoke hood) is a respiratory protective device dependent on the ambient atmosphere.

**4.2** A complete device consist of a face piece with combined filter and, if necessary, suitable packaging

**4.3** The face piece of a filtering smoke hood can be the hood itself or full mask, half mask, quarter mask or mouthpiece assembly connected to the hood. The combined filter is attached to the face piece and is not replaceable without tools. It is not intended that any disassembly or assembly be carried out by the user.

**5 CLASSIFICATION**

Devices designed to be carried on the person shall classified as “M” and those for storage as “S”.

**6 REQUIREMENTS**

**6.1 General**

The device shall be made of suitable material to withstand normal usage and exposure to those temperatures, humidities and corrosive environments that are likely to be encountered.

**6.2 Ergonomics**

The requirements of this standard are intended to take account of the interaction between the wearer, the respiratory protective device, and where possible the working environment in which the respiratory protective device is likely to be used.

**6.3 Design**

**6.3.1** The apparatus shall be sufficiently robust to withstand the rough usage it is likely to receive in service with respect to its classification.

**6.3.2** The apparatus shall be designed so that there are no protruding parts or sharp edges likely to be caught on projections in narrow passages.

**6.3.3** The apparatus shall be designed to ensure its full function in any orientation.

**6.3.4** The part of the apparatus likely to be in contact with the wearer shall not have sharp edges or burrs.

**6.3.5** Testing shall be done in accordance with **7.3** and **7.5**.

**6.4 Materials**

**6.4.1** Materials which come into direct contact with the wearer's shall not be known to be likely to cause skin irritation or any other adverse effect to health.

**6.4.2** All metallic parts shall be corrosion –resistant or protected against corrosion e.g. by packaging.

**6.4.3** If materials sensitive to humidity are used in the device, they shall be protected against the effects of humidity e.g. by suitable packaging.

**6.4.4** Testing shall be done accordance with **7.3**, **7.4** and **7.5**.

#### **6.5 Mass**

**6.5.1** The mass of the ready-for-use device without packaging or carrying device shall not exceed 1000 g.

**6.5.2** Testing shall be done in accordance with **7.1**.

#### **6.6 Conditioning**

**6.6.1** Prior to laboratory or practical performance tests, all test specimen shall be conditioned.

**6.6.2** Testing shall be done in accordance with **7.4**.

#### **6.7 Connections**

**6.7.1** Connections between components shall be designed such that they cannot be readily separated by the user. Testing shall be done in accordance with **7.3**

**6.7.3** The connection between filter and hood assembly shall withstand axially a tensile force of 50 N. Testing shall be done in accordance with **7.12**.

#### **6.8 Packaging**

**6.8.1** The packaging shall be easy to open without damaging the equipment tools.

**6.8.2** Testing shall be done in accordance with **7.3**.

#### **6.9 Practical Performance**

**6.9.1** The complete apparatus shall undergo practical performance tests. These general tests serve the purpose of checking the apparatus for imperfections that cannot be determined by the tests described elsewhere in this standard.

**6.9.2** Where, in the opinion of the test Laboratory, approval is not granted because practical performance tests show the apparatus has imperfections related to wearer's acceptance, the test house shall provide full details of those parts of the practical performance tests which revealed these imperfections. This will enable other test laboratory duplicate the tests and assess the results there of.

**6.9.3** Testing shall be done in accordance with **7.5**.

#### **6.10 Leakage**

##### **6.10.1 Inward Leakage Excluding Filter Penetration (Breathing Zone)**

**6.10.1.1** For filtering smoke hoods fitted in accordance with the instructions for use, at least 46 out of the 50 individuals results for the inward leakage over each of the exercise periods as defined in **7.6.1** (for example 10 subjects x 5 exercise periods) shall be not greater 5 percent and, in addition, at least 8 out of the 10 individual wearer arithmetic means (10 subjects) for the inward leakage, averaged over all exercise periods shall be not greater than 2 percent.

**6.10.1.2** Testing shall be done in accordance with **7.6.1**.

##### **6.10.2 Leakage into ocular zone**

**6.10.2.1** The leakage of the test agent shall not exceed 20 percent.

**6.10.2.2** Testing shall be done in accordance with **7.6.2**.

#### **6.11 Filter**

##### **6.11.1 Gas Capacity**

**6.11.1.1** The breakthrough time shall not be less than 15 min when the test agents shown in Table 1 are used.

**6.11.1.2** Testing shall be done in accordance with **7.7**.

**Table 1 Test gas conditions**

(Clause 6.11.1.1)

Test gas	Test gas concentration in air <sup>a</sup> ml/m <sup>3</sup> (=ppm)	Breakthrough concentration <sup>b</sup> ml/m <sup>3</sup> (=ppm)
Propenal (acrolein)	100	0.5
Hydrogen chloride (HCl)	1000	5
Hydrogen cyanide (HCN)	400	10 <sup>c</sup>
Carbon monoxide	2500	200 <sup>d</sup>
	5000	
	7500	
	10000	

- 
- a) A deviation of  $\pm 10$  percent in Test gas concentration from required value shall be acceptable. The recorded breakthrough times shall be adjusted, if necessary, by simple proportion to conform with the specified influent concentration.
  - b) The breakthrough concentration is an arbitrary value and it is used only to define the end point of the filter capacity under laboratory testing conditions.
  - c) C<sub>2</sub>N<sub>2</sub> may sometimes be present in the effluent air. The total concentration of (HCN + C<sub>2</sub>N<sub>2</sub>) shall not exceed 10 (= ppm) ml/m<sup>3</sup> at breakthrough.
  - d) Time weighted average in any single 5 min period.
- 

### 6.11.2 Filter Penetration

**6.11.2.1** The filter shall meet the requirements of clause 5.5 of IS 15322 for penetration of particle filter class P2 or P3 using sodium chloride as test agent.

**6.11.2.2** Testing shall be done in accordance with 7.8.

### 6.12 Valves

**6.12.1** The complete device may be provided with one or more inhalation and exhalation valves. If the device is equipped with valves, the valves shall operate correctly and independent of their orientation. They shall be protected against dirt and mechanical damage.

**6.12.2** Testing shall be done in accordance with 7.3 and 7.5.

### 6.13 Breathing Resistance

**6.13.1** The inhalation resistance shall not exceed 8 mbar and the exhalation resistance shall not exceed 3 mbar.

**6.13.2** Testing shall be done in accordance with 7.9.

### 6.14 Flammability

**6.14.1** The materials used shall not present a danger for the wearer and shall not be of highly flammable nature.

**6.14.2** The filtering smoke hood or other exposed parts shall not continue to burn or present any additional hazard to the wearer. It is not required that the filtering smoke hood still has to be useable after the test.

**6.14.3** Testing shall be done in accordance with 7.3 and 7.10.

### 6.15 Carbon Dioxide Content of Inhalation Air

**6.15.1** The carbon dioxide content of inhalation air (dead space) shall not exceed an average of 2 percent by volume.

**6.15.2** Testing shall be done in accordance with 7.11.

### 6.16 Head Harness

If a harness is fitted it shall meet the requirements for the harness specified in IS 14166.

### 6.17 Vision

#### 6.17.1 Visor

**6.17.1.1** The visors shall be reliably assembled to the device.

**6.17.1.2** Testing shall be done in accordance with **7.3** and **7.5**.

#### **6.17.2** *Impairment of vision*

**6.17.2.1** Visors shall not distort vision as determined in practical performance tests. There shall be no significant impairment of vision by fogging as determined in practical performance tests.

**6.17.2.2** Testing shall be done in accordance **7.5**.

#### **6.17.3** *Field of Vision*

**6.17.3.1** The field of vision is acceptable if determined so in practical performance tests.

**6.17.3.2** Testing shall be done in accordance **7.5**.

### **6.18 Sealing**

**6.18.1** Each complete device or filter component shall be sealed and shall not be resalable except by the use of special equipment. The sealing shall be such that it can readily be opened when necessary but not inadvertently. When the packaging seal has been broken this shall be obvious by visual inspection.

**6.18.2** Testing shall be done in accordance with **7.3** and **7.5**.

### **6.19 Integrity of filtering smoke hood at high carbon monoxide concentrations**

**6.19.1** The device shall maintain its mechanical integrity and shall not present a hazard to the wearer.

**6.19.2** Testing shall be done in accordance with **7.7.2.2** but with the variation to use 1.0 % by volume carbon monoxide in air as the test atmosphere, and **7.3**.

### **6.20 Ingress of Humidity**

**6.20.1** If materials sensitive to humidity are used these materials shall be protected against humidity.

**6.20.2** After conditioning in accordance with **7.4** the device shall meet the requirements of this standard.

### **6.21 Temperature of Inhaled Air**

**6.21.1** The temperature of the inhaled air shall not exceed 90 °C dry bulb and 50 °C wet bulb during the test duration of 15 min.

**6.21.2** Testing shall be done in accordance with **7.7.2.2** but the variation to use 0.5 percent by volume carbon monoxide in air as the test atmosphere.

### **6.22 Communication**

**6.22.1** A person wearing the device shall be able to hear verbal communications from the test supervisor.

**6.22.2** A person wearing the device shall be able to communicate verbally. This does not apply when the device is equipped with a mouthpiece assembly.

**6.22.3** Testing shall be done in accordance with **7.5**.

## **7 TEST METHODS**

### **7.1 General**

**7.1.1** If no special measuring devices or measuring methods are specified, commonly used methods and devices should be applied.

**7.1.2** Before performing tests involving human subjects, account should be taken of any national regulations concerning the medical history, examination or supervision of the test subjects.

### **7.2 Nominal Values and Tolerances**

Unless otherwise specified, the values stated in this standard are expressed as nominal values. Except for temperature limits, values which are not stated as maxima or minima shall be subject to tolerance of  $\pm 5$  percent. Unless otherwise specified, the ambient temperature for testing shall be from 16 °C to 32 °C, but for the mechanical tests from 10 °C to 30 °C, and the temperature limits shall be subject to an accuracy of  $\pm 1$  °C.

### **7.3 Visual Inspection**

A visual inspection of the filtering devices shall be carried out and the appropriate results reported. The visual inspection includes marking and information supplied by the manufacturer.

## 7.4 Conditioning

### 7.4.1 General

7.4.1.1 The conditioning procedures specified in 7.4.2 to 7.4.6 shall be applied sequentially to all test specimens.

7.4.1.2 The device shall be conditioned in the smallest packaging in which it is stored or carried.

### 7.4.2 Mechanical Strength

The device shall be tested in its packaging in accordance with IS 15322 using 2 000 rotations for “S” type and 10 000 rotations for “M” type.

### 7.4.3 Impact

7.4.3.1 The device shall be dropped in its packaging six times from the height of 1.5m onto a smooth concrete surface using different starting orientations.

7.4.3.2 This conditioning applies only to devices of ‘M’ type.

### 7.4.4 Resistance of Packaging to Puncture and Tear

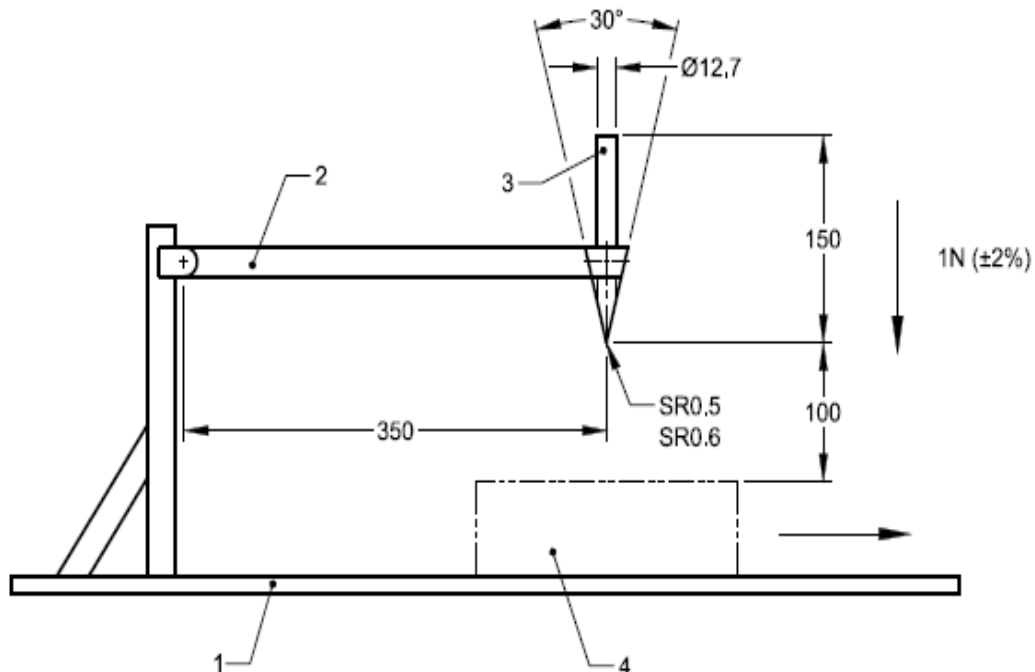
#### 7.4.4.1 Principle

A striker is allowed to fall with a specified energy, point downwards onto the device packaged as described in 7.4.1. The packaging is then pulled out from under the point and inspected for punctures or tears.

#### 7.4.4.2 Apparatus

Typical test equipment is shown in Fig. 1. It consists mainly of

- a) Striker;
- b) Mounting arm for the striker: suitably pivoted;
- c) Smooth polished steel base plate;
- d) Spring balance



#### Key

- 1 Steel base plate
- 2 Mounting arm for the striker

- 3 Striker
- 4 Test specimen

FIG. 1 SCHEME OF TYPICAL EQUIPMENT FOR TESTING PUNCTURE AND TEAR RESISTANCE

#### 7.4.4.3 Procedure

- a) It shall be ensured that the effective force at rest of the mounting arm and the striker is  $(1 \pm 2)$  N %. The necessary adjustment shall be made using a spring balance attached to the striker.
- b) The test specimen in its packaging is placed under the striker such that when released the striker hits the packaging.
- c) The impact of the striker shall be from a height of 100 mm.
- d) Leaving the striker in contact with the packaging, briskly pull the packaging away in the direction shown in Fig. 1.
- e) Examine the packaging for any puncture or tear.
- f) Repeat the procedure twice more to hit different areas of the packaging.

#### 7.4.5 Temperature

7.4.5.1 The device shall be in the packaging as described in 7.4.1.

7.4.5.2 Testing shall be done as per below temperatures & conditions;

- a)  $(70 \pm 3)$  °C, Dry atmosphere (atmosphere where relative humidity is less than 20 percent) for  $(72 \pm 3)$  hours duration of exposure
- b)  $(70 \pm 3)$  °C, Wet atmosphere (atmosphere where relative humidity is greater than or equal to 95%) for  $(72 \pm 3)$  hours duration of exposure
- c)  $(-30 \pm 3)$  °C for  $(24 \pm 1)$  hours duration of exposure.

And allowed to return to room temperature for at least 4 hours between exposures and prior to subsequent testing.

#### 7.4.6 Pressure Changes

7.4.6.1 Only devices classified as 'M' shall be exposed in its packaging as described in 7.4.1 consecutively to the following pressure changes;

- a) 2 pressure change cycles in a test chamber for negative pressure from ambient pressure to differential pressure of  $(-400 \pm 10)$  mbar.
- b) The final pressure shall be achieved in less than 20 s. After 60 s the pressure compensation shall be started by venting the test chamber. The pressure compensation shall be achieved in less than 20 s.
- c) 3000 pressure change cycles in a test chamber for negative pressure from ambient pressure to a differential pressure of  $(-300 \pm 10)$  mbar.
- d) The final pressure shall be achieved in less than 10 s. After 60 s the pressure compensation shall be started and shall be achieved in less than 10 s.

If there is more than one test specimen in the test chamber to be exposed to the pressure changes then the test specimens shall not be in contact with each other.

### 7.5 Practical Performance Test

#### 7.5.1 General

7.5.1.1 For practical performance tests, only devices of the type which passed the laboratory testing shall be worn.

7.5.1.2 A total of 5 filtering smoke hoods shall be tested.

7.5.1.3 Prior to the test the filtering smoke hoods shall be examined to ensure that they are in good working condition and can be used without hazard.

7.5.1.4 for test subjects shall be selected who are familiar with using such or similar devices.

7.5.1.5 Five test subjects shall be used for the practical performance tests. They shall be made familiar with the device using the instructions for use.

7.5.1.6 The test subjects shall complete the exercises listed in 7.5.2 in a normally lit room at ambient atmosphere and the test temperature and the humidity shall be recorded.

7.5.1.7 During the tests the device shall be subjectively assessed by the wearer and after the test, comments on the following shall be recorded:

- a) harness comfort (if fitted);
- b) security of fastenings and couplings;
- c) accessibility of controls (if fitted);
- d) clarity of vision on the visor of the facepiece;
- e) the visibility of a sign consisting of letters 100 mm in height at a distance of 6 m;

- f) communication with a test supervisor;
- g) Any other comments reported by the wearer on request.

#### 7.5.2 Exercises

- a) walking on the level with headroom of  $(1.3 \pm 0.2)$  m for 5 min;
- b) crawling on the level with headroom of  $(0.7 \pm 0.05)$  m for 5 min;
- c) filling a small basket (Fig. 2, approx. volume = 8 l) with “rubber chipping” or other suitable material from a hopper which stands 1.5 m high and has an opening at the bottom to allow the contents to be shoveled out and a further opening at the top where the basket full of rubber chippings shall be returned.
- d) The subject shall stoop or kneel as he wishes and fill the basket with rubber chippings. He shall then lift the basket and empty the contents back into the hopper. This shall be repeated 15 times in 5 min.

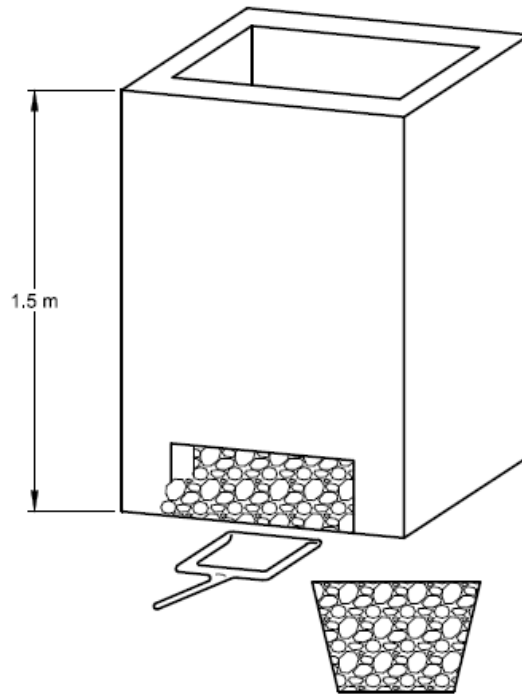


FIG. 2 HOPPER AND BASKET, RUBBER CHIPPINGS

### 7.6 Leakage

#### 7.6.1 Inward Leakage Excluding Filter Penetration (Breathing Zone)

7.6.1.1 Test subjects number shall be as per Annex C of IS14166.

7.6.1.2 Number of test specimen shall be as per Table 2 and as per Annex C of IS 14166.

7.6.1.3 Preparation of test specimen in accordance with Annex C.

7.6.1.4 Testing in accordance with IS 17274 Part 1 sulfur hexafluoride method.

#### 7.6.2 Leakage into Ocular Zone

##### 7.6.2.1 Number of Test Specimens and Test Subjects

For the test 10 test specimen and 10 test subjects shall be used.

##### 7.6.2.2 Preparation of Test Specimen

7.6.2.2.1 The visor in the hood shall be prepared by perforating such that a sampling probe and a thin air supply hose can be inserted in a leak tight manner by appropriate plugs.

7.6.2.2.2 The sampling probe shall be positioned inside the hood on one side of the test subject at eye level. The port for the air supply hose shall be positioned on the other side slightly displaced from the eye level, so that the test subject will not be distressed by the pressure compensating air flow. In the middle between the ports for the sampling probe and the air supply a third hole shall be punched for connecting a sensitive differential pressure meter (sensitivity  $\leq 0.01$  mbar).

##### 7.6.2.3 Setting-up procedure

7.6.2.3.1 The test subject wearing the hood prepared as described in 7.6.2.2 shall stand on a treadmill.



**7.6.2.3.2** A continuous sample flow rate of 0.5 l/min shall be fed through the sampling line to the flame photometer and shall be diluted with clean air, if necessary, to achieve the minimum flow rate required by the photometer.

**7.6.2.3.3** Clean air shall be fed through the air supply at a flow rate of 0.5 l/min into the hood. Adjustments to the air flow necessary to ensure that the pressure in the hood and ambient are the same shall be made while the test subject is standing without any movement.

NOTE — sometimes it may be necessary for the test subject to hold his breath for this procedure.

**7.6.2.4 Test procedure**

Testing shall be done in accordance with IS 14746 standard using sodium chloride as test agent.

At the end of the test challenge concentration in the test chamber shall be measured using the same flow rates and diluting conditions as were employed for measuring the in-hood concentrations.

**7.6.2.5 Expression of results**

The leakage into the ocular area  $L_H$  shall be calculated from the measurements made over the last 100 s of each of the exercise periods to avoid carry of results from one exercise to the other.

$$L_H (\%) = \frac{\text{Concentration at eye level}}{\text{Challenge concentration}} \times 100^{+1}$$

**7.7 Gas Capacity**

**7.7.1 General**

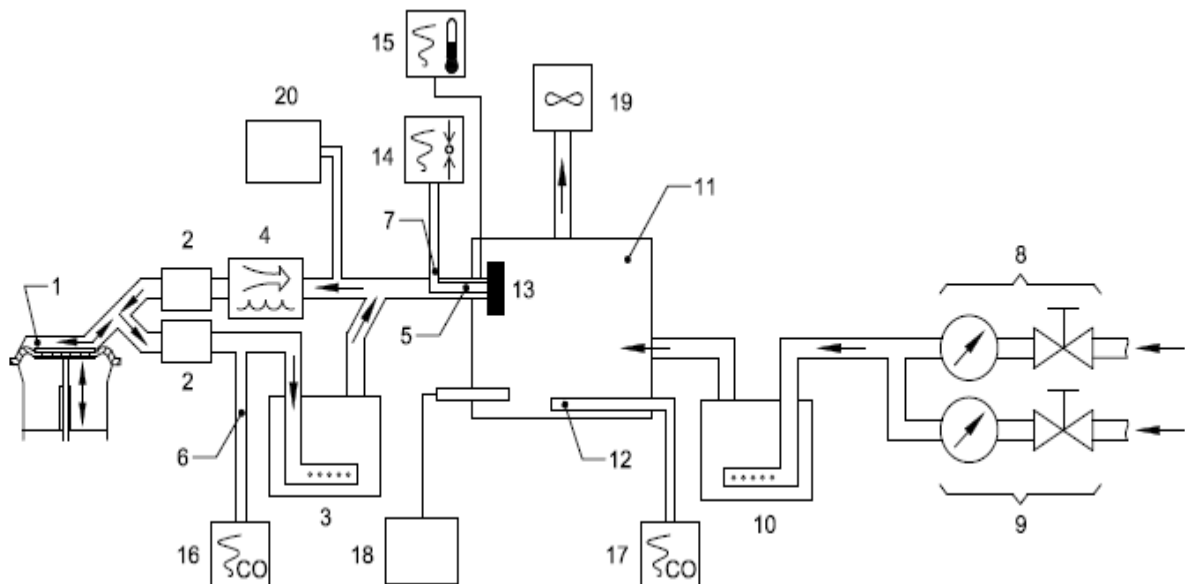
The gas capacity shall be tested with 3 filters for each test gas for each test condition. When one filter of a multiple filter device is tested separately, the air flow specified for a test shall be divided by the number of filters through which the airflow is proportioned.

**7.7.2 Carbon monoxide test**

**7.7.2.1 Apparatus**

Schematic diagrams of test arrangements that have been found suitable are given in Fig. 3, 4, 5 and 6. They mainly consists of;

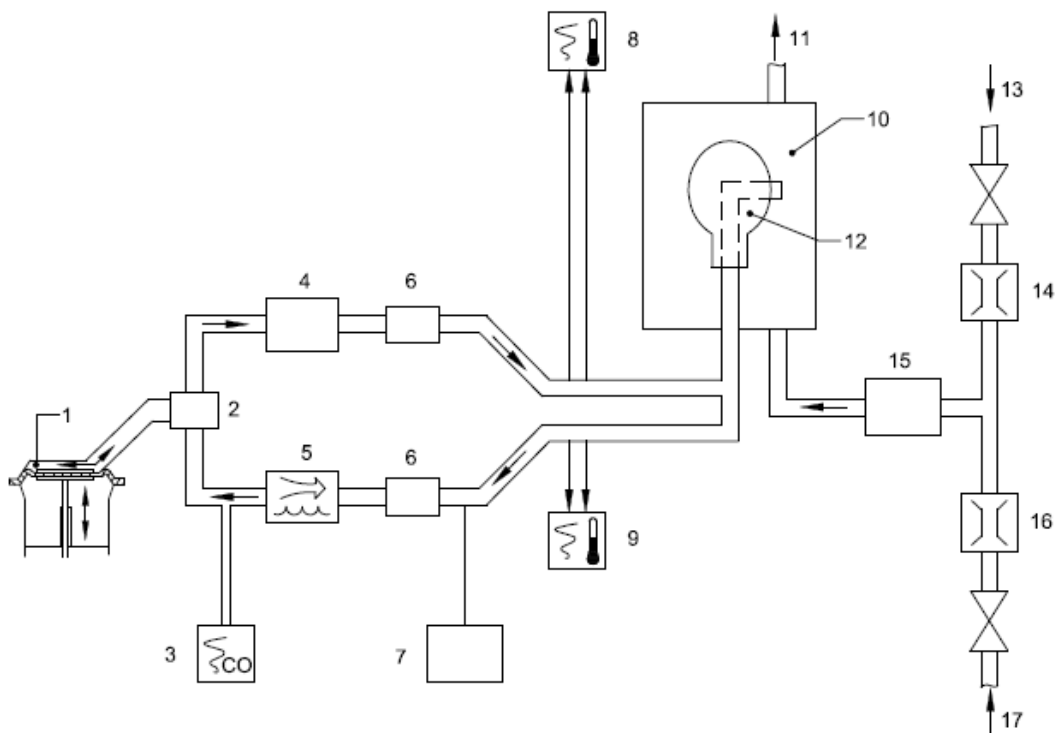
- a) breathing machine equipped with solenoid valves controlled by the breathing machine;
- b) humidifier;
- c) flow meters for air and carbon monoxide;
- d) test chamber equipped with sampling ports and exhaust;
- e) carbon monoxide analyzers ;
- f) means of measurement of pressure, temperature and moisture content;
- g) 'dummy or suitable adapter;
- h) Supply of carbon monoxide.



Key

- |  |  |
|--|--|
| 1 Breathing machine                      | 11 Test chamber (dimensions appr. 30 cm × 30 cm × 26 cm)   |
| 2 Solenoid valves                        | 12 Sampling port, CO-content of test atmosphere at filtering device inlet  |
| 3 Humidifier (exhaled air)               | 13 Test specimen under test (max. pressure difference at filtering device inlet with regard to ambient in the test chamber ± 0.5 mbar) |
| 4 Cooler                                 | 14 Pressure meter with plotter   |
| 5 Connector                              | 15 Temperature measurement equipment with plotter  |
| 6 Sampling port CO-content (inhaled air) | 16 Carbon monoxide analyser and recorder (inhaled air ml/m <sup>3</sup> and ml)  |
| 7 Orifice of pressure probe              | 17 Carbon monoxide analyser (test atmosphere)  |
| 8 Flow meter for test atmosphere         | 18 Humidity meter  |
| 9 Flow meter for carbon monoxide         | 19 Exhaust   |
| 10 Humidifier (test atmosphere)          | 20 Humidity meter (inhaled air)  |

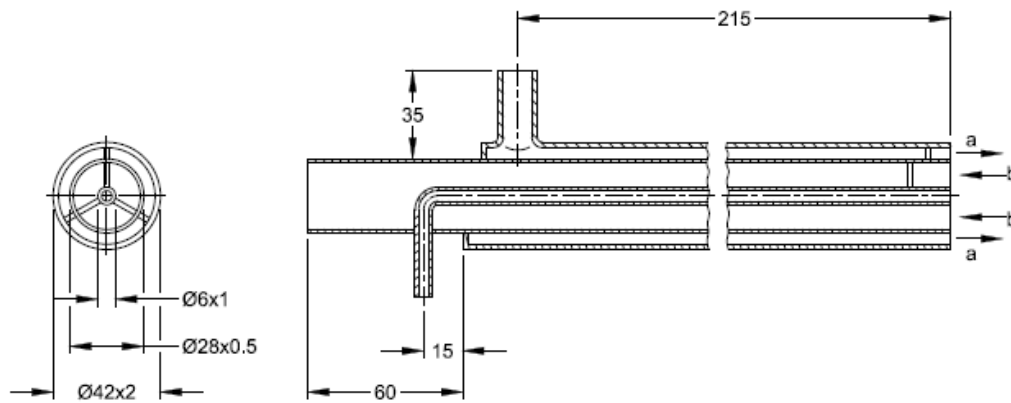
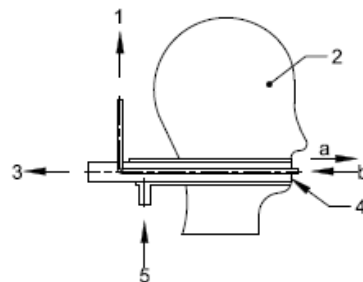
FIG. 3 SCHEME OF TEST EQUIPMENT FOR TESTING CARBON MONOXIDE PERFORMANCE USING FILTER ADAPTER



- |   |                             |
|---|-----------------------------|
| 1 Breathing machine                                       | 10 Test chamber             |
| 2 Valve system  | 11 Exhaust                  |
| 3 CO-analyser   | 12 Test specimen under test |
| 4 Humidifier  | 13 CO in                    |
| 5 Cooler  | 14 Flow meter               |
| 6 Solenoid valves   | 15 Humidifier               |
| 7 Dew point meter   | 16 Flow meter               |
| 8 Exhalation temperature and pressure measuring equipment | 17 Air in                   |

9 Inhalation temperature and pressure measuring equipment

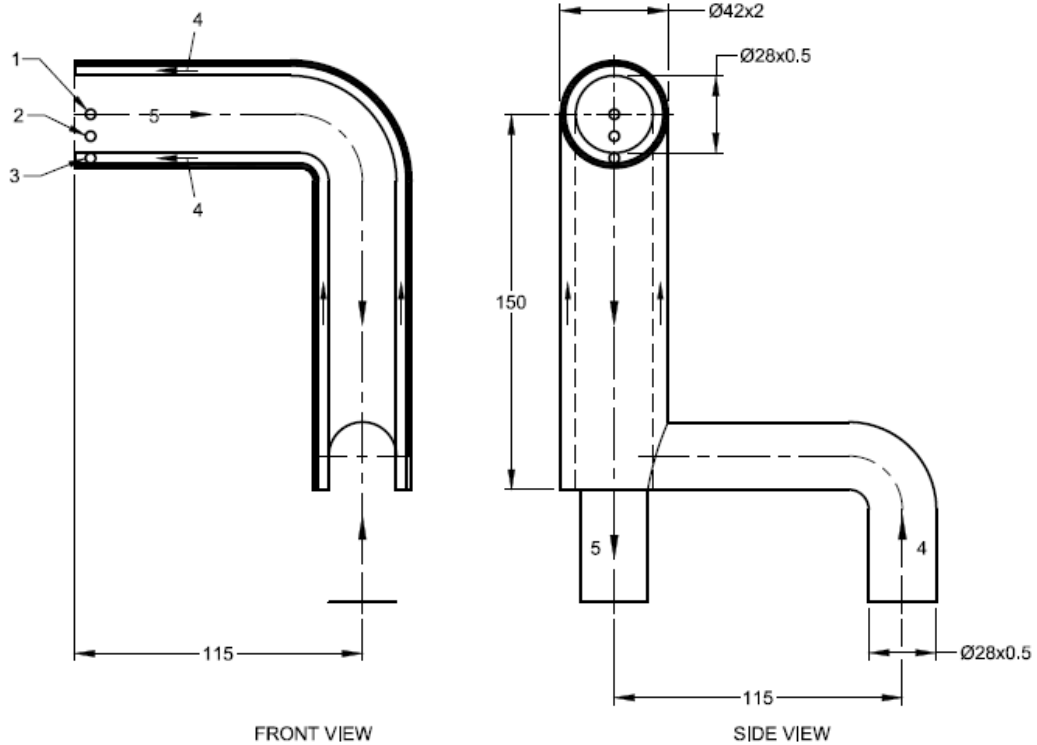
FIG. 4 SCHEME OF TEST EQUIPMENT FOR TESTING CARBON MONOXIDE PERFORMANCE USING DUMMY HEAD



Key

- a Exhalation
- b Inhalation
- 1 To pressure gauge (for measurement of breathing resistance)
- 2 Dummy head (Sheffield)
- 3 To breathing machine (inhalation)
- 4 Pressure port with 'Button' Probe (for measurement of breathing resistance)
- 5 From breathing machine (exhalation)

FIG. 5 DUMMY HEAD (SHEFFIELD HEAD FOR TESTING GAS CAPACITY, CARBON DIOXIDE CONTENT OF INHALATION AIR AND BREATHING RESISTANCE)



**Key**

- 1 Location of sampling port for breathing resistance
- 2 Location of inhalation thermocouple
- 3 Location of exhalation thermocouple
- 4 Exhale
- 5 Inhale

FIG. 6 TYPICAL ARRANGEMENT OF AN ALTERNATIVE CONNECTOR FOR DUMMY HEAD

**7.7.2.2 Procedure**

**7.7.2.2.1** The hood to be tested shall be mounted on the dummy head. The filter, if tested separately, shall be mounted on a suitable adapter. The test shall be carried out including the valves of the hood, if applicable.

NOTE — It may be necessary to use a sealant to ensure an effective seal between the hood and the dummy head or adapter respectively.

**7.7.2.2.2** With a flow of not less than 100 l/min of air with carbon monoxide and water vapour content fed into the test chamber via control valves and flow meters the following conditions in the test chamber shall be established using the breathing machine set to 20 cycles/min and 1.5 l/stroke:

Concentration of carbon monoxide	0.25 % by volume
Humidity (moisture content of test atmosphere)	20.7 g/m <sup>3</sup>
Temperature of test atmosphere	(25 ± 1) °C
Temperature of exhaled air	(37 ± 1) °C
Humidity of exhaled air	95-100%

**7.7.2.2.3** The temperature and humidity of the test atmosphere and exhalation air shall be controlled by using suitable conditioners.

**7.7.2.2.4** The carbon monoxide and water vapour concentrations as well as the differential pressure in the test chamber 2.5 cm in front of the air inlet of the test specimen shall be monitored and recorded continuously during the test.

NOTE — The effect of differential pressure and of the dilution of the challenge atmosphere by exhaled air shall be taken into account and the concentration of carbon monoxide and moisture shall be adjusted accordingly.

**7.7.2.2.5** The breathing resistance and the carbon monoxide concentration ( $\text{ml/m}^3$ ) shall be measured and recorded continuously.

**7.7.2.2.6** When tested against 0.5 percent by volume carbon monoxide in air as test atmosphere dry bulb temperature of the inhaled air shall be measured using a fast response thermocouple (for example NiCr-Ni 0.2 mm diameter); the moisture content of inhaled air shall be measured continuously. A suitable method is given in Annex B.

#### **7.7.2.3** *Other concentrations*

The test shall be repeated but with the variation to use 0.5 percent, 0.75 percent, and 1.0 percent by volume carbon monoxide in air until all four values have been used.

NOTE — Four concentrations are used to establish the catalytic characteristics of the materials and the configuration of the device.

#### **7.7.2.4** *Breakthrough criteria*

The carbon monoxide concentration of inhaled air shall not exceed  $200 \text{ ml/m}^3$  time weighted average in any 5 min period.

#### **7.7.3** *Other Test Gases*

**7.7.3.1** The conditions shown in Table 1 shall be used for testing with the gases specified in **6.11.1**.

**7.7.3.2** The filter under test shall be connected to attest rig generating a continuous air flow of  $30 \text{ l/min}$  ( $\pm 3$  percent) with the required concentration of test gas.

**7.7.3.3** The test atmosphere shall be at a temperature of  $(20 \pm 1) \text{ }^\circ\text{C}$  and shall have a relative humidity of  $(70 \pm 5)$  percent. When hydrogen chloride is used as a test gas the relative humidity shall be  $(30 \pm 10)$  percent.

**7.7.3.4** The breakthrough concentration shall be monitored with a maximum error of 20%. The breakthrough time shall be stated in minutes.

### **7.8** *Filter Penetration*

**7.8.1** Testing in accordance with IS 17274 (Part 3) using 3 filters and sodium chloride aerosol.

NOTE — If the filter cannot be tested separately, it may be necessary to use a sealant to ensure an effective seal between the hood and the dummy head or adapter respectively.

**7.8.2** When one filter of a multiple filter device is tested separately, the air flow specified for a test shall be divided by the number of filters through which the air flow is proportioned.

### **7.9** *Breathing Resistance*

**7.9.1** Two filtering smoke hoods shall be tested.

**7.9.2** The ready-for-use device shall be mounted on a dummy head. The breathing resistance shall be determined at the mouth of the dummy head using a breathing machine (adjusted to  $1.5 \text{ l/stroke}$ ,  $20 \text{ cycles/min}$ ) using the procedure given at **7.7.2.2**. The flow rate at which the resistance is measured shall be corrected to  $23 \text{ }^\circ\text{C}$  and 1 bar absolute.

### **7.10** *Flammability*

#### **7.10.1** *Test Specimen*

Two filtering smoke hoods shall be tested.

#### **7.10.2** *Apparatus*

The test rig described in IS 17274 (Part 10) is used.

#### **7.10.3** *Procedure*

**7.10.3.1** The filtering smoke hood shall be fitted on the metallic dummy head. If the filtering smoke hood is not equipped with a head harness, the material of the filtering hood shall be clamped in an appropriate clamping device such that the material is horizontal.

**7.10.3.2** The distance between the outer surface of the filtering smoke hood and burner tips shall be adjusted to 250 mm.

**7.10.3.3** The pressure reducer shall be adjusted to approximately 0.15 bar. It shall be ensured that the control device for propane gas on the burners is fully opened and that the control device for air is fully closed. The temperature of the flame 250 mm above the burner tip shall be  $(800 \pm 50) \text{ }^\circ\text{C}$ .

**7.10.3.4** The filtering smoke hood (on the dummy head) or the filtering smoke hood material (in the clamp) shall be rotated once through the flame at a velocity of  $(6 \pm 0.5) \text{ cm/s}$ .

**7.10.3.5** Where components such as valve(s), filter(s) etc. are arranged on other parts of the filtering smoke hood, the test shall be repeated with these components at the appropriate height (250 mm) above the flame.

**7.10.3.6** After passing through the flame it shall be recorded whether or not the filtering smoke hood or other components continued to burn or presented any additional potential hazard to a wearer.

### 7.11 Carbon Dioxide Content of the Inhalation Air

Two filtering smoke hood shall be tested in accordance with IS 17274 (Part 9).

### 7.12 Connections

**7.12.1** Two filtering smoke hood shall be tested.

**7.12.2** Test time shall be 10 s. The filtering smoke hood shall be supported on a dummy head which shall be adjusted such that the load can be applied axially to the connection as shown in Fig. 7.

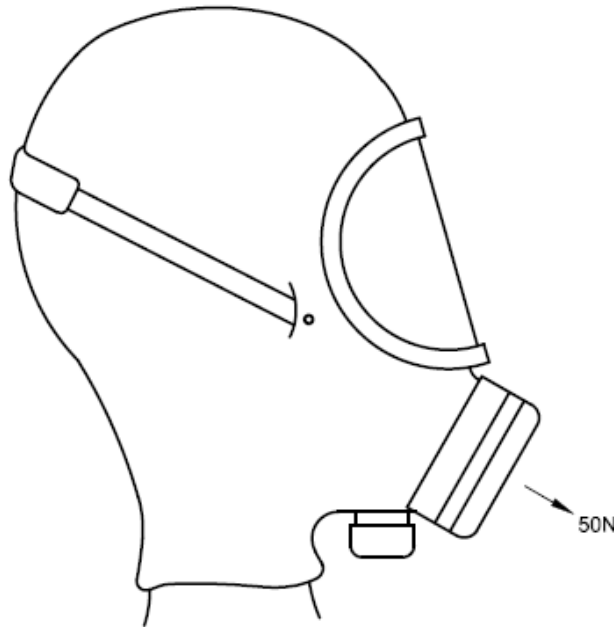


FIG. 7 SCHEME OF TEST ARRANGEMENT FOR TENSILE FORCE

## 8 MARKING

### 8.1 General

- All the markings shall be readable and durable.
- Sub- assemblies and piece parts with considerable bearing on safety shall be marked so that they can be identified.

### 8.2 Filtering Smoke Hood or Package

Filtering smoke hoods or at least the packaging shall be marked with;

- the dated number of this Indian standard and classification, if applicable;
- the manufacturer, supplier or importer shall be identified by name, trademark, or other means of identification;
- Manufacturer's model designation.

#### 8.2.1 BIS Certification Marking

The product may be marked with BIS certification mark.

The product(s) conforming to the requirements of this standard may be certified as per the conformity assessment schemes under the provisions of the *Bureau of Indian Standards Act, 2016* and the rules and regulations framed thereunder, and the products may be marked with the standard mark.

### 8.3 Packaging

The package shall be marked at least with the following information:

- Class, for example, 'M' or 'S'
- Date of manufacture (Year and month) and the end of shelf life or date for next inspection. Equivalent pictograms can be used (Fig. 8);

- c) manufacturer's recommended conditions of storage ( at least the temperature and humidity) or equivalent pictogram as shown in Fig. 8;
- d) the sentence "See information supplied by the manufacturer" at least in the official language(s) of the country of destination or the appropriate pictogram as shown in Fig. 8;
- e) when the reliable performance of the device may be affected by mass increase, e.g. absorption of humidity, the mass shall be given on the packaging that protects against humidity;
- f) If the device is fitted with a mouth piece and a nose clip the statement: 'Do not speak during use'.

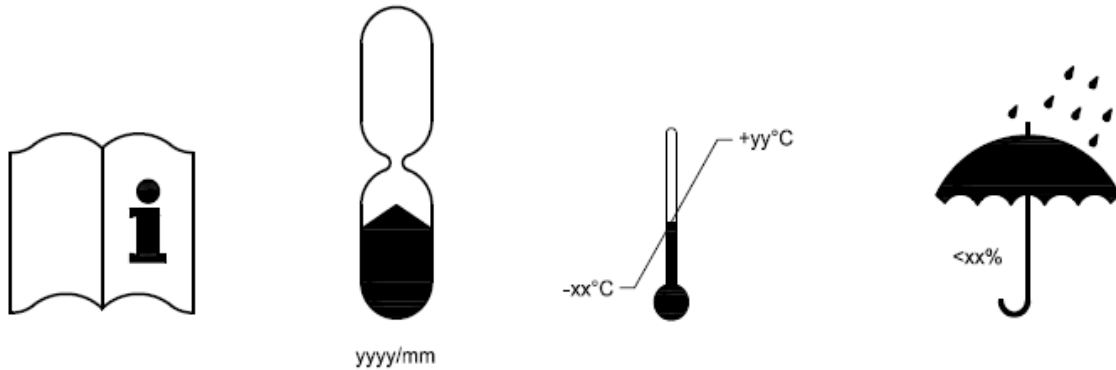


FIG. 8 PICTOGRAMS

## 9 INFORMATION SUPPLIED BY THE MANUFACTURER

9.1 On the delivery, the information supplied by the manufacturer;

- a) shall accompany every device;
- b) shall be at least in the official language(s) of the country of destination;
- c) shall contain all information necessary for trained and qualified persons on:

9.2 Application/limitations;

9.3 The information for single use only of short duration;

9.4 Information of limitation with respect to wearer's size and facial characteristics, and a statement of suitability for use by children;

9.5 The prevention of speech when wearing a device incorporating a mouthpiece;

9.6 controls prior to use;

9.7 donning and fitting;

9.8 use;

9.9 maintenance and inspection intervals;

9.10 storage;

9.11 Shelf life, if applicable.

9.12 special attention shall be drawn to;

- a) Self-rescue;
- b) The fact that no protection against oxygen deficiency is provided.

9.13 shall include warnings against problems likely to be encountered, for example:

- a) The unit shall not be damaged in any way;
- b) Donning procedure shall be carried out in accordance with the instructions for use.

9.14 shall be clear and comprehensible. If helpful illustrations should be added; e.g. showing the donning procedure;

9.15 It shall be possible to have access to the information supplied by the manufacturer without breaking any seal;

9.16 explanation of the used symbols shall be added.

### Table 2 Testing schedule

(Clause 7.6.1.2)

<b>Requirement Clause</b>	<b>Title</b>	<b>Conditioning according</b>	<b>Test Clause</b>	<b>Title</b>	<b>Number of samples<sup>a</sup></b>
7.3	Visual Inspection	7.4	7.3	Visual Inspection	All
6.3	Design	7.4	7.3 7.5	Visual inspection practical performance test	
6.4	Materials	7.4	7.3 7.5	Visual inspection practical performance test	5
6.5	Mass	7.4	7.1	General	All
6.6	Conditioning	7.4	7.4	Conditioning	All
6.7	Connections	7.4	7.3 7.12	Visual inspection Connections	2
6.8	Packaging	7.4	7.3 7.4	Visual inspection Conditioning	All
6.9	Practical performance	7.4	7.5	Practical performance test	5
6.10.1	Inward leakage excluding Filter penetration (breathing zone)	7.4	7.6.1	Inward leakage excluding Filter penetration (breathing zone)	10
6.10.2	Leakage into ocular zone	7.4	7.6.2	Leakage into ocular zone	10
6.11.1	Gas capacity	7.4	7.7	Gas capacity	21
6.11.2	Filter penetration	7.4	7.8	Filter penetration	3
6.12	Valves	7.4	7.3 7.5	Visual inspection Practical performance test	10
6.13	Breathing resistance	7.4	7.9	Breathing resistance	2
6.14	Flammability	7.4	7.3 7.10	Visual inspection Flammability	2
6.15	Carbon dioxide content of inhalation air	7.4	7.11	Carbon dioxide content of inhalation air	2
6.16	Head harness	7.4	IS 14166	Head Harness	2
6.17.1	Visor	7.4	7.3	Visual inspection	All
6.17.2	Impairment of vision	7.4	7.5	Practical performance test	5
6.17.3	Field of vision	7.4	7.5	Practical performance test	5
6.18	Sealing	7.4	7.3	Visual inspection	All
6.19	Integrity of filtering smoke hood at high carbon monoxide concentrations	7.4	7.3 7.7.2.2	Visual inspection Procedure	3
6.20	Ingress of humidity	7.4	7.4	Conditioning	All



<b>6.21</b>	Temperature of inhaled air	<b>7.4</b>	<b>7.7.2.2</b>	Procedure	3
<b>6.22</b>	Communication	<b>7.4</b>	<b>7.5</b>	Practical performance test	5
<b>8</b>	Marking	<b>7.4</b>	<b>7.3</b>	Visual inspection	All
<b>9</b>	Information supplied by the manufacturer	<b>7.4</b>	<b>7.3</b>	Visual inspection	All
‘a’ Most samples are used for more than one test.					

**ANNEX A**

*(Clause 2)*

**LIST OF REFERRED STANDARDS**

<i>IS No</i>	<i>Title</i>
IS 8347 : 2008	Glossary of terms relating to relating to respiratory protective devices
IS 14166 : 1994	Respiratory protective devices — Full Face masks — Specification
IS 14746 : 1999	Respiratory protective devices — Half face masks — Specification
IS 15322 : 2003	Particle Filters used in Respiratory Protective Equipment — Specification
IS 14138 (Part 1) : 1994	Respiratory protective devices —Threads for face pieces — Specification — Part 1 standard thread connection
IS 17274 (Part 1) : 2019\ ISO16900-1 : 2014	Respiratory Protective Devices — Methods of Test and Test Equipment Part 1 Determination of Inward Leakage
IS 17274 (Part 2) : 2019/ ISO 16900-2: 2017	Respiratory Protective Devices — Methods of Test and Test Equipment Part 2 Determination of Breathing Resistance
IS 17274 (Part 3) : 2019/ISO 16900-3:2012	Respiratory Protective Devices — Methods of Test and Test Equipment Part 3 Determination of Particle Filter Penetration
IS 17274 (Part 6) : 2019/ISO 16900-6:2015	Respiratory Protective Devices — Methods of Test and Test Equipment Part 6 Mechanical Resistance / Strength of Components and Connections
IS 17274 (Part 7) : 2019 /ISO 16900-7:2015	Respiratory Protective Devices — Methods of Test and Test Equipment Part 7 Practical Performance Test Methods
IS 17274 (Part 9) : 2019/ISO 16900-9 : 2015	Respiratory Protective Devices — Methods of Test and Test Equipment Part 9 Determination of Carbon Dioxide Content of the Inhaled Gas
IS 17274 (Part 10) : 2019/ISO 16900-10 :2015	Respiratory Protective Devices — Methods of Test and Test Equipment Part 10 Resistance to Ignition, Flame, Radiant Heat and Heat

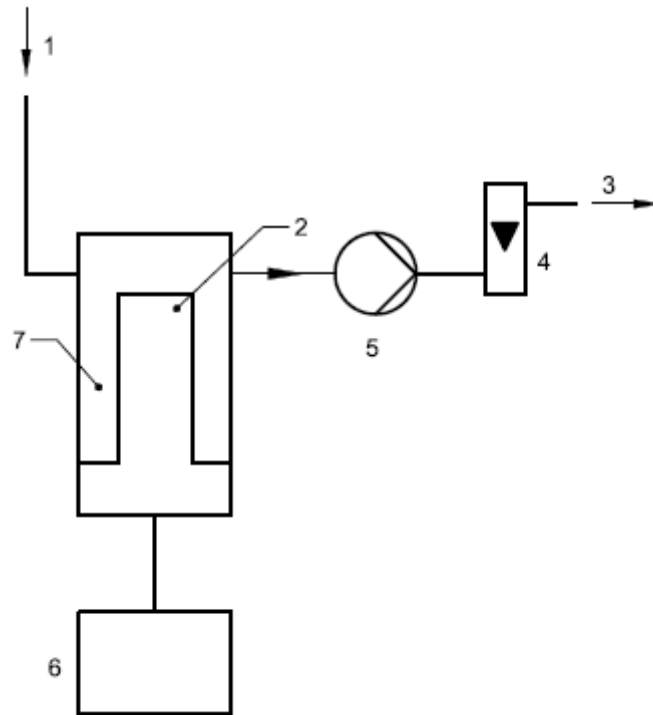
**ANNEX B**

*(Informative)*

**METHOD FOR THE DETERMINATION OF WET BULB  
TEMPERATURE OF INHALED AIR**

**B-1 APPARATUS**

A schematic arrangement of a suitable apparatus is shown in Fig. 9.



Key

- 1 Sample in
- 2 Detector head
- 3 Exhaust
- 4 Flow meter (0.1 l/min)
- 5 Sample pump
- 6 Control & display unit
- 7 Stainless steel sensor head block

FIG. 9 SCHEMATIC ARRANGEMENT FOR THE DETERMINATION OF WET BULB  
TEMPERATURE OF THE INHALED AIR

**B-2 PROCEDURE**

A continuous sample of air shall be drawn from the inhalation breathing path at a constant flow rate of 0.1 l/min and passed through the sensor head block. All sample lines and the sensor head block shall be heated to at least 10 °C above the anticipated dew point temperature. The dew point temperature shall be recorded throughout the test. The dry bulb temperature shall be measured in accordance with 7.7.2.2.

**B-3 CALCULATION**

**B-3.1** The wet bulb temperature then shall be determined using the following calculation.

**B-3.2** At the dew point temperature, the gas is fully saturated. Hence, the relative humidity (RH) is given by following equation (eq. 1):

$$RH(\%) = \frac{\text{saturation vapour pressure at dew point}}{\text{saturation vapour pressure at dry bulb temperature}} \times 100$$

**B-3.3** Saturation vapour pressure at temperature 't' shall be obtained from the following equation (eq. 2):

$$\log_{10}(e^n) = \frac{Gt}{H+t} + I$$

Where,

$e^n$  is the saturation vapour pressure (mbar)

t is the dry bulb temperature (°C)

G is the constant = 7.5

H is the constant = 237.3

I is the constant = 0.78571

**B-3.4** Since the dry bulb temperature has been measured, and the relative humidity determined from equations (eq.1) and (eq. 2), then the wet bulb depression, and hence the wet bulb temperature can be obtained from standard psychrometric tables.

## ANNEX C

(Clause 7.6.1.3)

### PREPARATION OF TEST SPECIMENS

#### C-1 OUTLINE OF THE METHOD

Where different gas filters/combined filters are available the type with the highest breathing resistance shall be used for testing.

NOTE — The provision of surrogates or the sealing of filters areas during leakage test should not negate or remove any effect of leakage where the exhalation valves are fitted into filter material. If this may be the case, then this joint should be exposed during gas capacity testing with valve diaphragm sealed.

#### C-2 AIR SUPPLY AND FILTER MODIFICATIONS

The valved filtering half masks shall be prepared for testing for leakage by one of the procedures described **B.2.1** and **B.2.2** or by whatever means are agreed between manufacturer and test house to achieve meaningful results.

##### C-2.1 Air Supply Techniques

###### C-2.1.1 Attachment of Air Supply Plenums

- a) Lightweight hose(s) and plenum cap (s) shall be attached to the filter element(s) of the valved filtering half masks test device and fresh air supplied to it at a flow resistance (including hoses) representative of that measured for the unmodified valved filtering half mask.
- b) It shall be ensured that exhalate escapes outside plenum area(s).
- c) It shall be ensured that the plenum does not affect the 'flexibility' of the device.

###### C-2.1.2 Sealing of Active Sorbent Surface

- a) The surface of filtering area(s) shall be sealed with 'flexible' sealant. The sealed filtering area(s) shall then be penetrated to allow clean air to be supplied via light hoses as in **C-2.1.1**. The weight of filter removed shall be compensated for if it is more than 5 % of the device weight.
- b) The sealant shall be flexible to prevent any adverse effect on the conformability of the device to the face.
- c) This method shall be preferred to **C-2.1.1** when filter elements extends to the face seal boundary.

##### C-2.2 Filter Element Modifications

###### C-2.2.1 Attachments of High Efficiency Particle Filters

- a) If the device is available with optional high efficiency particle filters, and the face piece elements are common throughout the range, this option may be used to test without further modification to provide the face seal leakage results required.
- b) Alternatively, it shall be possible to bond/attach high efficiency particle filters to the filter area(s)
- c) Possibly by their attachment to the plenum housing described in **C-2.1.1**. This 'surrogate' device shall then be used for test.
- d) When the device is not ordinarily available with high efficiency particle filters, the total resistance of the 'surrogate' device shall be adjusted to match that of the original device.
- e) Replacement of filter elements by particle filters
- f) With some designs, it will be possible for the purpose of testing only to replace the gas or combined filter element(s) with high efficiency particle filters. These two will allow leakage to be measured provided these 'surrogate' devices have the same weight and breathing resistance as their gas/vapour counterparts.

