

BUREAU OF INDIAN STANDARDS

DRAFT FOR COMMENTS ONLY

Not to be reproduced without permission of BIS or use as Standard

Doc No.: PGD 13 (25113) P-Draft

March 2024

भारतीय मानक मसौदा

**रोलिंग बियरिंग्स — प्लमर ब्लॉक
हाउसिंग — सीमा आयाम**

[IS 4773 का चौथा पुनरीक्षण]

Draft Indian Standard

**Rolling Bearings — Plummer Block
Housings — Boundary Dimensions**

[*Fourth revision of IS 4773*]

ICS 21.100.20

Bearings Sectional Committee, PGD 13

Last date for Comment: 25 May 2024

NATIONAL FOREWORD

This Indian Standard (Fourth Revision) will be adopted by Bureau of Indian Standards after the draft is finalized by the Bearings Sectional Committee and approval by the Production and General Engineering Division Council (PGDC).

This standard was first published in 1968 and subsequently revised in 1979 and 2002 and has now been revised again to align with ISO 113: 2010, and added designations and inch size housing dimension table as per industry practice.

In this revision a new Annexure 'A' has been added for additional boundary layer of Plummer block housings.

The text of ISO Standard has been approved as suitable for publication as an Indian Standard without deviations. Certain conventions and terminologies are however not identical to those used in Indian Standards. Attention is particularly drawn to the following:

- a) Wherever the words 'International Standard' appear referring to this standard, they should be read as 'Indian Standard'.
- b) Comma (,) has been used as a decimal marker while in Indian Standards, the current practice is to use a point (.) as the decimal marker.

In this adopted standard, reference appears to certain International Standards for which Indian Standards also exist. The corresponding Indian Standards, which are to be substituted in their places, are listed below along with their degree of equivalence for the editions indicated:

<i>International Standard</i>	<i>Corresponding Indian Standard</i>	<i>Degree of Equivalence</i>
ISO 15 Rolling bearings — Radial bearings — Boundary dimensions, general plan	IS 5669 : 2019/ISO 15 : 2017 Rolling bearings — Radial bearings — Boundary dimensions, general plan (<i>second revision</i>)	Identical
ISO 5593 Rolling bearings — Vocabulary	Doc No. PGD 13 (23225) / ISO 5593 : 2023 Rolling bearings — Vocabulary (<i>third revision</i>)	Identical
ISO 15241 Rolling bearings – Symbols for physical quantities	Doc No. PGD 13 (24061) / ISO 15241 : 2012 Rolling bearings – Symbols for physical quantities	Identical

Annexure A of this standard is for information only.

For the purpose of deciding whether a particular requirement of this standard is complied with, the final value, observed or calculated expressing the result of a test or analysis, shall be rounded off in accordance with IS 2 :2022 ‘Rules for rounding off numerical values (*Second revision*)’.

Indian Standard
**ROLLING BEARINGS — PLUMMER BLOCK
HOUSINGS — BOUNDARY DIMENSIONS**
(*Fourth Revision*)

1 SCOPE

This International Standard specifies boundary dimensions for two-bolt plummer block housings primarily intended for rolling bearings in diameter series 0, 1, 2 and 3, as specified in ISO 15, and for four-bolt plummer block housings primarily intended for rolling bearings in diameter series 0, 1, 2 and 3.

2 NORMATIVE REFERENCES

The following referenced documents are indispensable for the application of this document. For dated references, only the edition cited applies. For undated references, the latest edition of the referenced document (including any amendments) applies.

<i>ISO</i>	<i>Title</i>
15	Rolling — bearings Radial bearings — Boundary dimensions, general plan
5593	Rolling bearing — Vocabulary
15241	Rolling bearings — Symbols for physical quantities

3 TERMS AND DEFINITIONS

3.1 Two-Bolt Plummer Block Housing

Applicable to both split Inch and Metric two-bolt plummer block housing. Housing with two cap bolts and two bolt holes in the base See Figure 1.

3.2 Four-Bolt Plummer Block Housing

Applicable to both split Inch and Metric four-bolt plummer block housing. Housing with four cap bolts and four bolt holes in the base See Figure 2

4 SYMBOLS

For the purposes of this document, the symbols given in ISO 15241 and the following apply.

The symbols shown in Figures 1 and 2 and the values given in Table 1, 2, 3, 4 and 5 denote nominal dimensions unless specified otherwise.

5 DESIGNATION

Designation of a 2 bolt Plummer block housing:

- a) Roller bearing of diameter series 2
 - 1) cylindrical bore bearing with shaft diameter $d = 90$ mm
Plummer block housing IS 4773 — SN 218

- 2) Tapered bore bearing with shaft diameter $d = 80$ mm Plummer block housing IS 4773— SN 518
- b) Rolling bearing of diameter series 3
 - 1) cylindrical bore bearing with shaft diameter $d = 60$ mm
Pillow block housing IS 4773 — SN 312
 - 2) Tapered bore bearing with shaft diameter $d = 55$ mm Plummer block housing IS 4773 — SN 612

NOTE — Prefix may be kept as per the agreement between supplier and customer

- A overall width
- A_1 width of base
- D_a seating diameter
- H distance from mounting face to centerline of seating diameter
- H_1 height of feet
- H_2 height of housing
- J center distance between bolt holes (length)
- J_1 center distance between bolt holes (width)
- L length of base
- N width of bolt hole
- N_1 length of bolt hole
- S Recommended screw diameter (for foundation fastening)

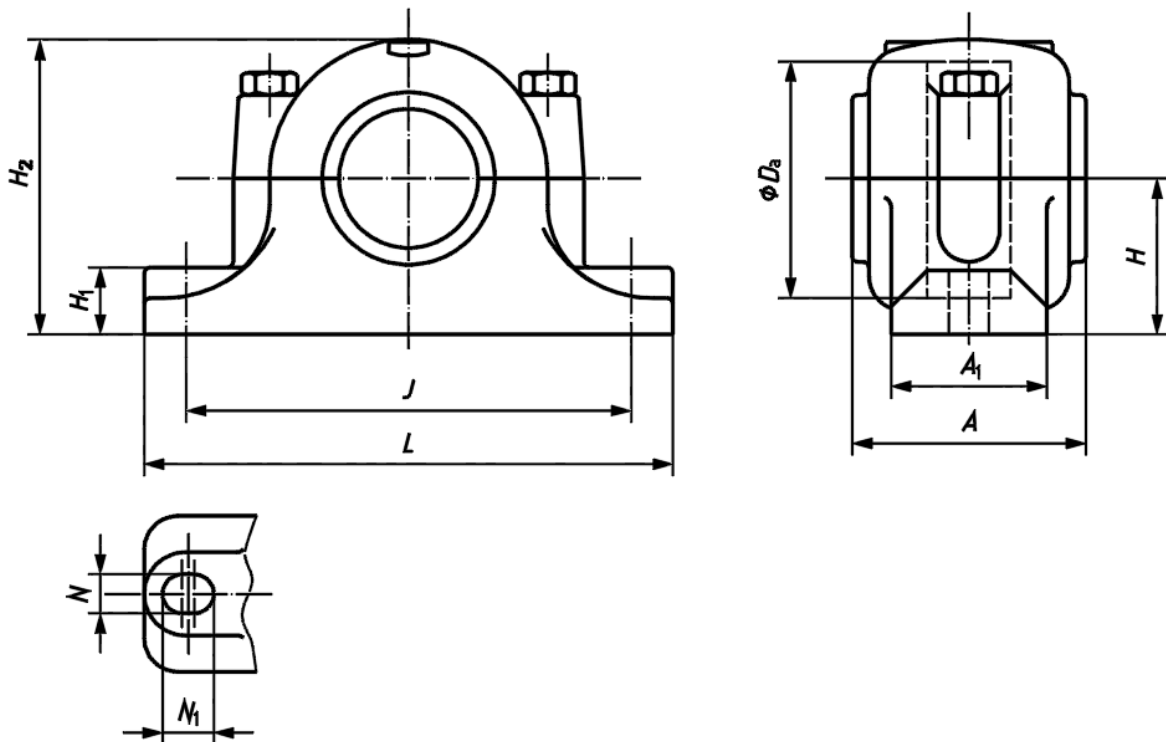


FIG. 1 TWO-BOLT SPLIT PLUMMER BLOCK HOUSING

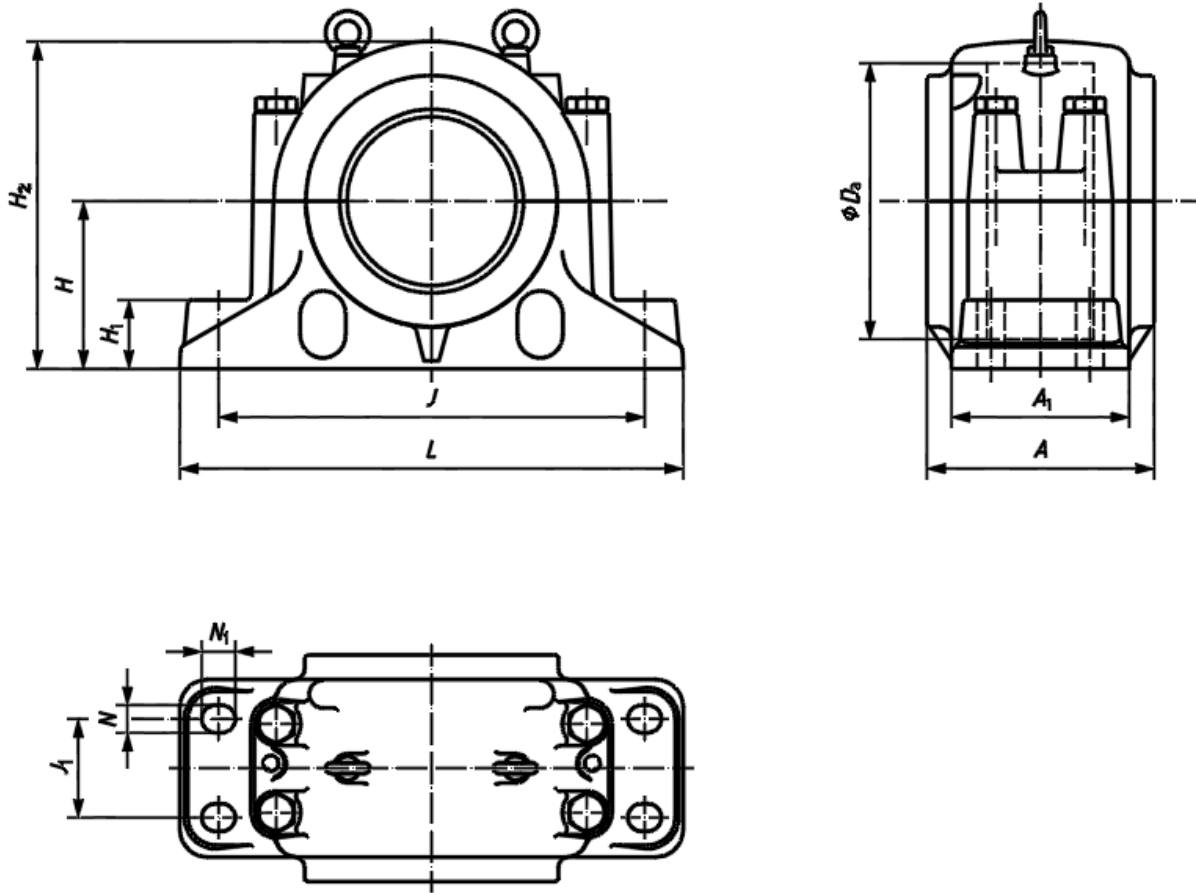


FIG. 2 FOUR-BOLT **SPLIT** PLUMMER BLOCK HOUSING

6 BOUNDARY DIMENSIONS

Boundary dimensions of **metric spilt** two-bolt plummer block housings and four-bolt plummer block housings shall be as given in Table 1 and 2, respectively.

Boundary dimensions of inch spilt two-bolt plummer block housings shall be as given in table 3a or 3b. Boundary dimensions of inch spilt four-bolt plummer block housings shall be as given in Table 4a or 4b or 5.

NOTE — For additional boundary dimensions of **metric spilt** two-bolt plummer block housings and four-bolt plummer block housings, which are also commonly used, see Annex A.

Where “max.” is shown in Table 1 and 2, this indicates that the value is both the nominal and the largest actual value permitted. Where “min.” is shown in Table 1 and 2, this indicates that the value is both the nominal and the smallest actual value permitted.

Table 1 Two-bolt plummer block housings – **Metric spilt**

(Clause 4 and 6)

Dimensions in Millimeters

**Doc No.: PGD 13 (25113) P-Draft
March 2024**

Da	H	J	N	N₁ min.	A max.	L max.	A₁	H₁ max.	S
52	40	130	15	15	72	170	46	22	M12
62	50	150	15	15	82	190	52	22	M12
72	50	150	15	15	85	190	52	22	M12
80	60	170	15	15	92	210	60	25	M12
85	60	170	15	15	92	210	60	25	M12
90	60	170	15	15	100	210	60	25	M12
100	70	210	18	18	105	270	70	28	M16
110	70	210	18	18	115	270	70	30	M16
120	80	230	18	18	120	290	80	30	M16
125	80	230	18	18	120	290	80	30	M16
130	80	230	18	18	125	290	80	30	M16
140	95	260	22	22	135	330	90	32	M20
150	95	260	22	22	140	330	90	32	M20
160	100	290	22	22	145	360	100	35	M20
170	112	290	22	22	150	360	100	35	M20
180	112	320	26	26	165	400	110	40	M24
190	112	320	26	26	165	405	110	40	M24
200	125	350	26	26	177	420	120	45	M24
210	140	350	26	26	177	425	120	45	M24
215	140	350	26	26	187	420	120	45	M24
225	150	380	28	28	187	465	130	50	M24
230	150	380	28	28	192	450	130	50	M24
240	150	390	28	28	195	475	130	50	M24
250	150	420	35	35	207	510	150	50	M30
260	160	450	35	35	210	545	160	60	M30
270	160	450	35	35	224	540	160	60	M30
280	170	470	35	35	225	565	160	60	M30
290	170	470	35	35	237	560	160	60	M30
300	180	520	35	35	237	630	170	70	M30
310	180	515	35	35	240	620	170	60	M30
320	190	560	35	35	245	680	180	70	M30
340	200	580	42	42	260	710	190	70	M36
360	210	610	42	42	270	725	200	75	M36
400	240	680	48	48	290	825	220	80	M42
420	250	720	48	48	300	865	230	80	M42

Table 2 Four-bolt plumber block housings – Metric spilt
(Clause 4 and 6)

**Doc No.: PGD 13 (25113) P-Draft
March 2024**

Dimensions in Millimeters

Da	H	J	J₁	N	N₁ min.	A max.	L max.	A₁	H₁ max.	S
280	170	430	100	28	28	235	515	180	70	M24
290	170	430	100	28	28	235	515	180	70	M24
300	180	450	110	28	28	245	535	190	75	M24
310	190	480	120	28	28	265	565	210	80	M24
320	190	480	120	28	28	265	565	210	80	M24
340	210	510	130	35	35	285	615	230	85	M30
360	220	540	140	35	35	295	645	240	90	M30
370	220	540	140	35	35	295	645	240	90	M30
400	240	600	150	35	35	315	705	260	95	M30
420	260	650	160	42	42	325	775	280	100	M36
440	260	650	160	42	42	325	775	280	100	M36
460	280	670	160	42	42	325	795	280	105	M36
480	300	710	190	42	42	355	835	310	110	M36
500	300	710	190	42	42	355	835	310	110	M36
520	320	750	200	42	42	375	885	330	115	M36
540	320	750	200	42	42	375	885	330	115	M36
560	340	810	220	42	50	400	950	360	120	M36
580	340	810	220	42	50	400	950	360	120	M36
600	350	840	220	42	50	400	1000	360	120	M36
620	360	870	220	42	50	400	1040	360	120	M36
650	380	950	240	48	60	430	1120	390	125	M42
680	410	1000	260	48	60	460	1170	420	130	M42
700	410	1000	260	48	60	460	1170	420	130	M42
720	420	1030	260	48	60	460	1220	430	135	M42
760	440	1070	260	48	60	470	1280	440	145	M42
780	460	1110	260	56	70	470	1330	440	155	M48
790	460	1110	260	56	70	470	1330	440	155	M48

Table 3a Two-bolt plummer block housings – Inch spilt

(Clause 4 and 6)

Dimensions in Inches

Da	H	J	N	N₁	A	L	A₁	H₁	H₂
3.3465	2.25	6.63	0.63	1.38	3.50	8.25	2.38	0.81	4.38
3.5433	2.50	6.75	0.63	1.13	3.50	8.25	2.38	0.94	4.75
3.9370	2.75	7.63	0.75	1.25	3.63	9.63	2.75	0.94	5.34
4.7244	3.00	8.81	0.75	2.13	4.19	11.00	3.13	1.00	5.78

**Doc No.: PGD 13 (25113) P-Draft
March 2024**

5.1181	3.25	9.13	0.75	1.75	4.63	11.25	3.13	1.13	6.38
5.5118	3.50	10.31	0.88	2.25	4.75	13.00	3.50	1.19	6.88
5.9055	3.75	10.44	0.88	2.00	4.81	13.00	3.50	1.25	7.25
6.2992	4.00	11.00	0.88	2.13	6.13	13.75	3.88	1.50	7.75
6.6929	4.25	11.63	0.88	2.88	6.38	14.25	3.88	1.75	8.25
7.0866	4.50	12.38	1.00	2.50	5.88	15.25	4.38	1.75	8.69
	4.50	12.38	1.00	2.50	6.50	15.25	4.38	1.75	8.69

Table 3b Two-bolt plummer block housings – Inch spilt

(Clause 4 and 6)

Dimensions in Inches

D_a	H	J	N	N₁	A	L	A₁	H₁	H₂
3.3465	2.25	6.63	0.63	1.00	3.44	8.25	2.38	0.81	4.38
3.5433	2.5	6.75	0.63	0.88	3.44	8.25	2.38	0.94	4.75
3.9370	2.75	7.63	0.75	1.00	3.75	9.63	2.75	0.94	5.25
4.7244	3.00	8.81	0.75	1.44	4.25	11.00	3.13	1.00	5.94
5.1181	3.25	9.13	0.75	1.25	4.63	11.25	3.13	1.13	6.38
5.5118	3.50	10.31	0.88	1.56	4.75	13.00	3.50	1.25	6.88
5.9055	3.75	10.44	0.88	1.44	4.81	13.00	3.50	1.25	7.31
6.2992	4.00	11.00	0.88	1.50	5.50	13.75	3.88	1.63	7.75
7.0866	4.50	12.38	1.00	1.75	5.81	15.25	4.38	1.75	8.44

Table 4a Four-bolt plummer block housings – Inch spilt

(Clause 4 and 6)

Dimensions in Inches

D_a	H	J	J₁	N	N₁	A	L	A₁	H₁	H₂
5.1181	3.25	9.13	1.88	0.75	1.75	4.63	11.25	3.13	1.13	6.38
5.5118	3.50	10.31	1.88	0.88	2.25	4.75	13.00	3.50	1.19	6.88
5.9055	3.75	10.44	2.13	0.88	2.00	4.81	13.00	3.50	1.25	7.25
6.2992	4.00	11.00	2.13	0.88	2.13	6.13	13.75	3.88	1.50	7.75
6.6929	4.25	11.63	2.13	0.88	2.88	6.38	14.25	3.88	1.75	8.25
7.0866	4.50	12.38	2.38	1.00	2.50	5.88	15.25	4.38	1.75	8.69
	4.50	12.38	2.38	1.00	2.50	6.50	15.25	4.38	1.75	8.69
7.4803	4.75	12.75	2.25	0.88	2.38	6.88	15.50	4.38	2.00	9.19
7.8740	4.94	13.56	2.75	0.88	2.75	6.25	16.50	4.75	2.00	9.56
8.2677	5.25	13.88	2.75	0.88	2.13	7.25	16.50	4.75	2.13	10.25
8.4646	5.25	13.88	2.75	0.88	2.13	7.25	16.50	4.75	2.13	10.25
8.8583	6.00	15.31	3.25	1.00	2.38	7.88	18.38	5.13	2.38	11.56
9.0551	6.00	15.31	3.25	0.94	2.31	7.88	18.38	5.13	2.38	11.56
9.4488	6.00	15.31	3.25	1.00	2.38	7.88	18.38	5.13	2.38	11.56
9.8425	6.00	16.56	3.38	0.61	1.74	7.63	20.13	5.88	2.38	11.75

**Doc No.: PGD 13 (25113) P-Draft
March 2024**

10.2362	6.31	17.63	3.75	1.13	2.38	8.25	21.25	6.25	2.50	12.50
	6.00	16.56	3.38	1.13	2.25	7.63	20.13	5.88	2.38	12.50
10.6299	6.31	17.63	3.75	1.13	2.38	8.25	21.25	6.25	2.50	12.50
11.0236	6.69	18.31	3.75	1.13	3.00	8.63	22.00	6.25	2.63	13.31
11.4173	6.69	18.31	3.75	1.13	3.00	8.63	22.00	6.25	2.63	13.31
11.811	7.06	20.50	4.25	1.38	3.63	9.25	24.75	6.75	2.75	14.56
12.2047	7.06	20.50	4.25	1.13	3.38	9.25	24.75	6.75	2.75	14.56
12.5984	7.50	22.25	4.63	1.13	3.88	9.56	26.75	7.13	3.00	15.50
13.3858	7.88	23.00	4.50	1.38	4.13	10.63	28.00	7.50	3.13	15.69
14.1732	8.25	23.75	5.00	1.38	3.88	10.69	29.50	8.00	3.38	17.19
	8.25	23.75	5.00	1.38	3.88	11.00	29.50	8.00	3.38	17.19
14.9606	8.88	25.31	5.25	1.38	4.00	11.13	31.25	8.25	3.50	18.50
15.7480	9.50	26.31	5.25	1.63	4.75	11.38	32.75	8.75	3.75	18.50
	9.50	26.31	5.25	1.63	4.75	11.75	32.75	8.75	3.75	18.50
16.5354	9.88	27.88	5.50	1.63	4.88	11.94	34.25	9.00	4.00	20.19

Table 4b Four-bolt plummer block housings – Inch spilt

(Clause 4 and 6)

Dimensions in Inches

D_a	H	J	J₁	N	N₁	A	L	A₁	H₁	H₂
5.1181	3.25	9.13	1.88	0.63	1.13	4.63	11.25	3.13	1.13	6.38
5.5118	3.50	10.31	2.13	0.75	1.44	4.75	13.00	3.50	1.25	6.88
5.9055	3.75	10.44	2.13	0.75	1.31	4.81	13.00	3.50	1.25	7.31
6.2992	4.00	11.00	2.13	0.75	1.38	5.50	13.75	3.88	1.63	7.75
7.0866	4.50	12.38	2.38	1.00	1.75	5.81	15.25	4.38	1.75	8.44
7.8740	4.94	13.56	2.75	0.88	1.81	6.44	16.50	4.75	2.00	9.63
8.4646	5.25	13.88	2.75	0.88	1.50	7.13	16.50	4.75	2.13	10.25
9.0551	6.00	15.31	3.25	1.00	1.69	7.75	18.38	5.13	3.38	11.50
9.8425	6.00	16.50	3.38	1.13	2.00	7.38	20.13	5.88	2.38	11.75
10.6299	6.31	17.63	3.75	1.13	1.75	8.13	21.25	6.25	2.50	12.50
11.4173	6.69	18.31	3.75	1.13	2.06	8.50	22.00	6.25	2.63	13.31
12.2047	7.06	20.50	4.25	1.13	2.25	9.25	24.75	6.75	2.75	14.19
12.5984	7.50	22.25	4.63	1.13	2.50	9.63	26.75	7.13	3.00	14.88
13.3858	7.88	23.00	4.50	1.38	2.75	10.50	28.00	7.50	3.13	15.56
14.1732	8.25	23.75	5.00	1.38	2.63	11.00	29.50	8.00	3.38	16.50
15.7480	9.50	26.31	5.25	1.63	3.19	11.75	32.75	8.75	3.75	18.63

Table 5 Heavy Duty Four-bolt plummer block housings – Inch spilt

(Clause 4 and 6)

Dimensions in Inches

**Doc No.: PGD 13 (25113) P-Draft
March 2024**

D_a	H	J	J₁	N	N₁	A	L	A₁	H₁	H₂
7.0866	4.50	12.38	3.38	0.88	2.38	6.63	15.25	6.00	1.88	8.94
7.4803	4.75	12.75	3.63	0.88	2.38	6.75	15.50	6.13	2.00	9.44
7.8740	4.94	13.56	4.00	1.00	2.88	7.13	16.50	6.75	2.13	9.88
8.4646	5.25	13.88	4.13	1.00	2.25	7.25	16.50	6.88	2.25	10.50
9.0551	6.00	15.31	4.50	1.13	2.50	7.88	18.38	7.50	2.38	11.88
9.4488	6.00	15.31	4.50	1.13	2.50	7.88	18.38	7.50	2.38	11.88
9.8425	6.00	16.56	4.50	1.25	2.38	7.69	20.13	7.50	2.38	12.06
10.2362	6.31	17.63	4.75	1.25	2.50	8.25	21.25	7.88	2.50	12.81
10.6299	6.31	17.63	4.75	1.25	2.50	8.25	21.25	7.88	2.50	12.81
11.0236	6.69	18.31	5.00	1.25	3.13	8.63	22.00	8.25	2.50	13.69
11.4173	6.69	18.31	5.00	1.25	3.13	8.63	22.00	8.25	2.50	13.69
11.8110	7.06	20.50	5.50	1.25	3.50	9.50	24.75	9.00	2.50	14.25
12.2047	7.06	20.50	5.50	1.38	3.63	9.50	24.75	9.00	2.50	14.25
12.5984	7.50	22.25	5.88	1.38	4.13	9.88	26.75	9.38	2.75	15.19
13.3858	7.88	22.50	6.25	1.50	3.50	10.50	27.63	10.00	3.00	16.25
14.1732	8.25	24.00	6.75	1.50	3.50	11.00	28.75	10.50	3.25	17.13
14.9606	8.88	25.25	6.88	1.63	3.88	11.25	30.50	10.75	3.25	17.94
15.7480	9.50	26.75	7.25	1.63	3.88	11.75	32.00	11.25	3.50	19.25
16.5354	9.88	27.94	7.63	1.75	4.38	12.13	33.50	11.75	3.50	19.94
17.3230	10.25	29.75	8.75	1.75	3.25	13.63	35.00	13.13	3.75	20.88
18.1100	12.00	33.13	9.00	1.75	2.50	15.38	38.25	14.75	3.50	23.44
	12.00	33.13	9.00	1.75	2.50	15.25	38.25	14.75	3.38	23.44
18.8980	12.00	33.13	9.00	1.75	2.50	15.38	38.25	14.75	3.50	23.44
	12.00	33.13	9.00	1.75	2.50	15.25	38.25	14.75	3.38	23.44
19.6850	12.00	33.13	9.00	1.75	2.50	15.25	38.25	14.75	3.38	23.44
20.4720	12.00	32.75	10.00	2.00	3.50	15.63	39.00	15.25	4.19	24.00
21.2600	12.81	35.75	10.50	2.00	3.50	16.13	41.75	15.75	4.50	25.75
	12.00	33.13	9.00	1.75	2.50	16.13	38.25	14.75	3.38	25.75
22.0470	12.81	35.75	10.50	2.00	3.50	16.13	41.75	15.75	4.50	26.00
22.8350	14.00	37.50	10.75	2.13	3.63	18.13	43.75	17.75	5.00	27.88
23.6220	14.50	40.00	11.00	2.13	3.63	17.50	46.00	17.13	5.25	28.88
24.4090	14.50	40.00	11.00	2.13	3.63	17.50	46.00	17.13	5.25	28.88
25.5910	15.50	42.63	12.25	2.38	4.13	19.13	48.75	18.75	5.50	30.50
26.7720	15.50	42.63	12.25	2.38	4.13	19.13	48.75	18.75	5.50	30.50
27.5590	17.00	45.25	14.50	2.38	4.13	21.63	53.00	21.00	5.50	33.75
	17.00	45.25	14.50	2.38	4.13	21.63	52.00	21.00	5.50	33.75
28.3470	17.00	45.25	14.50	2.38	4.13	21.63	53.00	21.00	5.50	33.75
	17.00	45.25	14.50	2.38	4.13	21.63	52.00	21.00	5.50	33.75
29.9210	18.00	48.00	15.00	2.63	4.38	22.13	54.25	21.63	5.75	35.75
30.7090	18.00	48.00	15.00	2.63	4.38	22.13	54.25	21.63	5.75	35.75
31.1020	18.00	48.00	15.00	2.63	4.38	22.13	54.25	21.63	5.75	35.75

ANNEX A
(Clause 6 and Informative)

ADDITIONAL BOUNDARY DIMENSIONS OF METRIC SPILT
PLUMMER BLOCK HOUSINGS

A-1 Additional boundary dimensions of metric spilt two-bolt plummer block housings and four-bolt plummer block housings, which are also commonly used, are given in Table 6 and 7 respectively.

Table 6 Two-bolt plummer block housings
(Clause A-1)

Dimensions in Millimeters

D_a	H	J	N	N_1 min.	A max.	L max.	A_1	H_1 max.
250	150	420	33	33	207	510	150	50
260	160	450	33	33	205	540	160	60
270	160	450	33	33	224	540	160	60
280	170	470	33	33	220	560	160	60
290	170	470	33	33	237	560	160	60
320	190	560	33	33	240	650	180	70

Table 7 Four-bolt plummer block housings
(Clause A-1)

Dimensions in Millimeters

D_a	H	J	J_1	N	N_1 min.	A max.	L max.	A_1	H_1 max.
260	160	450	110	35	35	230	540	200	50
280	170	470	120	35	35	250	560	220	50
290	170	470	120	35	35	250	560	220	50
300	180	520	140	35	35	270	630	250	55
310	180	510	140	35	35	270	620	250	60
320	190	540	150	35	35	280	650	270	60
320	190	560	140	35	35	310	680	270	55
340	200	570	160	35	35	310	700	280	65
360	210	610	170	35	35	300	740	290	65
370	225	640	180	40	40	320	780	310	70
400	240	680	190	40	40	340	820	320	70
420	250	710	200	42	42	350	860	340	85
440	260	740	200	42	42	360	880	350	85
460	280	770	210	42	42	360	920	350	85

**Doc No.: PGD 13 (25113) P-Draft
March 2024**

480	280	790	210	42	42	380	940	360	85
500	300	830	230	50	50	390	990	380	100
520	310	860	230	50	50	400	1020	370	106
540	325	890	250	50	50	430	1060	400	100

Bibliography

[1] ISO 8062-3, Geometrical product specifications (GPS) — Dimensional and geometrical tolerances for moulded parts — Part 3: General dimensional and geometrical tolerances and machining allowances for castings

BUREAU OF INDIAN STANDARDS

Headquarters:

Manak Bhavan, 9 Bahadur Shah Zafar Marg, New Delhi 110002

Telephones: 2323 0131, 2323 3375, 2323 9402 Website: www.bis.gov.in

Regional Offices:

Telephones

Central: Manak Bhavan, 9 Bahadur Shah Zafar Marg
NEW DELHI 110002 2323 7617
2323 3841

Eastern: 1/14, C.I.T. Scheme VII M, V.I.P. Road, Kankurgachi
KOLKATA 700054 2337 8499, 2337 8561
2337 8626, 2337 9120

Northern : Plot No. 4-A, Sector 27-B, Madhya Marg,
CHANDIGARH 160019 26 50206, 265 0290

Southern : C.I.T. Campus, IV Cross Road,
CHENNAI 600113 2254 1216, 2254 1442
2254 2519, 2254 2315

Western : Manakalaya, E9 MIDC, Marol, Andheri (East)
MUMBAI 400093 2832 7891, 2832 7892
2832 9295, 2832 7858

Branches: AHMEDABAD. BENGALURU. BHOPAL. BHUBANESWAR. COIMBATORE.
DEHRADUN. DURGAPUR. FARIDABAD. GHAZIABAD. GUWAHATI. HYDERABAD. JAIPUR.
JAMMU. JAMSHEDPUR. KOCHI. LUCKNOW. NAGPUR. PARWANOO. PATNA. PUNE.
RAIPUR. RAJKOT. VISAKHAPATNAM.