

BUREAU OF INDIAN STANDARDS
DRAFT FOR COMMENTS ONLY

(Not to be reproduced without the permission of BIS or used as an Indian Standard)

भारतीय मानक मसौदा

फसल सुरक्षा उपस्कर - वायु चलित फुहारा - नोजल स्विवेल नटो के आयाम
(आईएस 15921 पहला पुनरीक्षण)

Draft Indian Standard

**EQUIPMENT FOR CROP PROTECTION —
AIR-ASSISTED SPRAYERS — DIMENSIONS OF
NOZZLE SWIVEL NUTS**
(first revision of IS 15921)

ICS 65.060.40

Agricultural Machinery and Equipment Sectional Committee,
FAD 11

Last date for Comments: **03 June 2023**

FOREWORD

Formal clause will be added later

Swivel nuts of nozzles is an important component of air-assisted sprayers. The nozzle output is very often determined, when testing air-assisted sprayers. The fitting of measurement devices to the swivel nuts to collect the liquid is being practiced by test agencies and manufacturers. The standardization of outer dimensions of the nuts, may help to reduce the number of fitting pieces and furthermore the testing can be simplified.

The standard was first published in 2011 as an identical adoption of ISO 14710 : 1996 ‘Equipment for crop protection — Air-assisted sprayers — Dimensions of nozzle swivel nuts’

The ISO standard has been withdrawn. Considering the relevance of the standard in Indian scenario, the standard is being revised into an Indian Standard.

In reporting the results of a test or analysis made in accordance with this standard, if the final value, observed or calculated, is to be rounded off, it shall be done in accordance with IS 2 : 2022 ‘Rules for rounding off numerical values (*revised*)’.

Draft Indian Standard

**EQUIPMENT FOR CROP PROTECTION —
AIR-ASSISTED SPRAYERS — DIMENSIONS OF
NOZZLE SWIVEL NUTS**
(first revision of IS 15921)

1. Scope

This Indian Standard specifies the outer dimensions of the swivel nuts of nozzles for air-assisted sprayers.

NOTE - The nozzle output is very often determined when testing air-assisted sprayers. It is necessary to fit measurement devices to the swivel nuts to collect the liquid. If the outer dimensions of the nuts are standardized, the number of fitting pieces can be reduced and testing is then simplified.

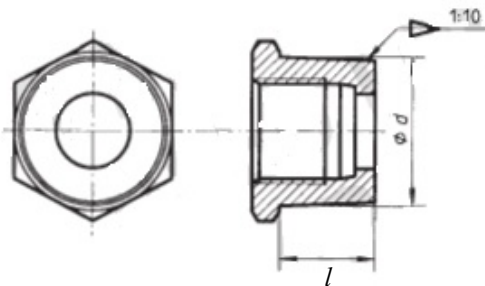
The defined dimensions simplify the fitting of measurement devices to the swivel nuts (for example, for the determination of the nozzle output).

2. Dimensions

The swivel nuts **shall** be conical with outer dimensions that correspond to Fig. 1 and Table 1.

Table 1 Dimensions of Nuts

d ± 0.1	l min.
25	15
30	15
35	15
40	15
Dimensions in millimetres	

**FIG. 1 TYPICAL DIAGRAM OF A SWIVEL NUT**