

IS2089:1911
(Reaffirmed 2005)

भारतीय मानक
(दूसरा पुनरीक्षण)

Indian Standard

**DRUMS FOR COVERED WINDING WIRES AND
STRIPS FOR ELECTRICAL PURPOSES ---
SPECIFICATION**

(Second Revision)

First Reprint **JANUARY** 1999

UDC 621: 3·046

@ BIS1991

BUREAU OF INDIAN STANDARDS
MANAK BHAVAN, 9 BAHADUR SHAH ZAFAR MARG
NEW DELHI 110002

May 1991

PriceGroap1

FOREWORD

This Indian Standard (Second Revision) was adopted by the Bureau of Indian Standards, after the draft finalized by the Winding Wires Sectional Committee had been approved by the Electrotechnical Division Council.

This standard was first published in 1962. First revision of this standard was undertaken in 1981 to bring it in line with the practice followed and experience gained through its implementation.

The second revision has been undertaken in order to update mainly the dimensions of drums.

This standard is intended to cover the technical provisions relating to drums of covered winding wires and strips as supplied. It does not include the provisions of reeling and wrapping which shall be in accordance with the product specification.

For the purpose of deciding whether a particular requirement of this standard is complied with, the final value, observed or calculated, expressing the result of a test or analysis, shall be rounded off in accordance with IS 2:1960 •Rules for rounding off numerical values(*revised*). The number of significant places retained in the rounded off value should be the same as that of the specified value in this **standard**.

Indian Standard

DRUMS FOR COVERED WINDING WIRES AND STRIPS FOR ELECTRICAL PURPOSES - SPECIFICATION

(Second Revision)

1 SCOPE

This standard specifies the dimensional requirements for drums for covered winding wires and strips for electrical purposes. It includes essential requirements for materials, construction and marking.

2 NOMENCLATURE

For the purpose of this standard the names of the various component parts of drums as shown in Fig .1 shall apply.

3 MATERIAL AND CONSTRUCTION

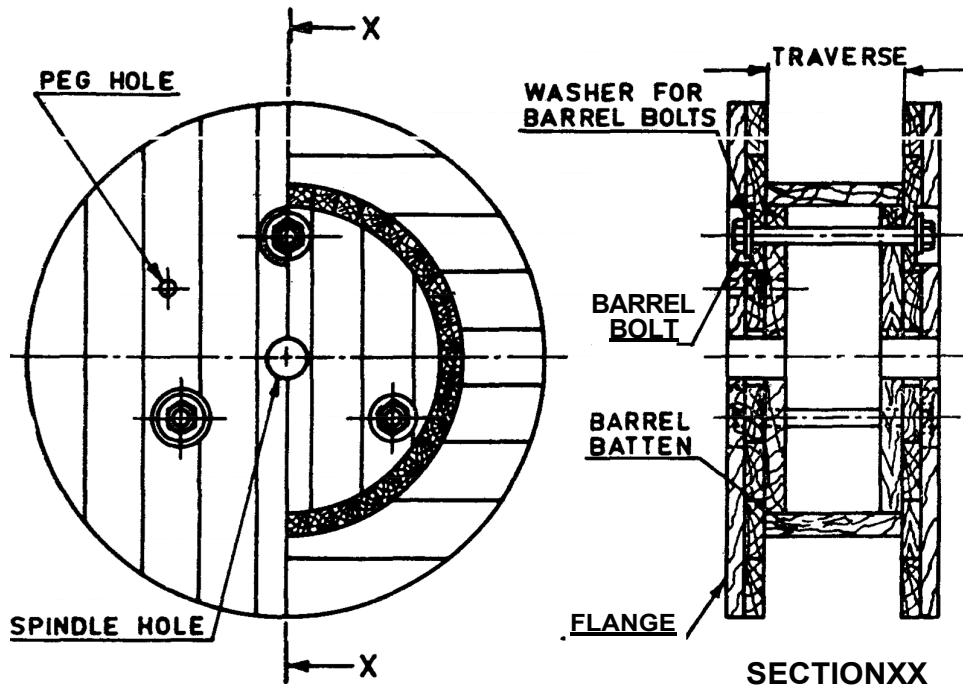
The drums shall be so constructed and made from such materials that they satisfy the conditions laid down in this standard. The flanges and barrel shall be free from protruding material capable of

Damaging the **wire, strip** or the hands of the operator during handling of the drum.

For Plastic Spools: The material requirements are to be stated in purchaser's order.

For Wooden Spools: The flanges shall be made of wood only.

3.2 All wooden components shall be manufactured from reasonably good quality soft wood or multiply strong plywood. The barrel may be made from thin plywood or veneer bent in a barrel form. The wood used in the construction shall be sound and free from defects that materially weaken the component parts of the drums. Wood preservative, which shall **have** no deleterious effect on the covering of the wire or strip, shall be used at the points where the barrel and flange components meet. If required by the purchaser the preservative treatment shall be applied to the entire drum.



NOTE -The number of barrel bolts may be increased in case of larger drums.

FIG.1 DRUM NOMENCLATURE (DRUM SHOWN WITH WOODEN FLANGES)

3.2.1 For ply flanges, the barrel base shall be made of iron tubes and its ends shall be rivetted on the outside of the flanges and barrel shall be made by covering with tough flexible ply board or similar materials.

3.3 Flanges

3.3.1 Flanges, if made of plank, shall be constructed with two thicknesses of plank, at right angle to each other, nailed and clenched together. Nails shall be driven from the inside face of the flange, punched and then clenched on the outer face. Flange boards shall not be less than the nominal thickness by more than 2 mm. There shall be not less than two nails per board in each ring.

Thin veneer or plywood shall be glued **with** suitable waterproof adhesive on inside of the flanges, and between. The barrel, to protect the delicately covered material from the rough surface of the flange. Block wood construction for flange, that is, single layer of wooden planks sandwiched between two layers of plywood shall not be used for the construction of the flange.

3.3.1.1 All nuts, bolts, screws and other fasteners shall be flushed or countersunk below the surface of the flange except for ply flanges.

3.2.2 A suitable circular recessed space shall be provided on the flange for the label, if used, so that

the label is below the flange surface and shall not be torn out in transit.

3.3.3 The flange shall be provided with a peg hole to take a braking device and for tensioning during unwinding. This shall be 16 mm in diameter and sufficiently deep and shall be drilled at a radius of 120 mm from the centre of the bore.

3.3.4 If required by the purchaser - Corrugated fasteners shall be applied at regular intervals on the circumference of the flange.

4 DIMENSIONS

The important dimensions of drums shall be in accordance with Table 1.

Drum sizes shall be denoted by the reference numbers shown in Table 1.

5 MARKING

The flange of each drum may be marked with the reference number given in col 1 of Table I.

Drums may also be marked with the Standard Mark.

Table I Dimensions of Drums

(Clauses 4.1, 4.2 and 5.1)

(All dimensions in millimetres.)

Ref No.	Flange Dia	Traverse	Barrel Dia	Flange Thickness, Max	Overall Width	Bore Dia	Capacity (Approx.) kg
(1)	(2)	(3)	(4)	(5)	(6)	(7)	(8)
320(AL-P)	320±3.0	172±2.0	114±1.0	17.0±1.0	206±4.0	39±1.0	15
K355(CU-P)	353±3.0	156±2.0	200±3.0	17.0±1.0	190±4.0	22±1.0	15
D355(P)	355±3.0	160±2.0	224±2.0	28±1.0	216±4.0	40±1.0	40
400(P)	395±3.0	210±2.0	195±2.0	28±1.0	257±4.0	40±1.0	85
400B(P)	395±3.0	230±2.0	250±3.0	28±1.0	257±4.0	40±1.0	70
400B(P)	395±3.0	230±2.0	300±3.0	28±1.0	257±4.0	40±1.0	35
450(P)	450±5.0	230±2.0	250±3.0	28±1.0	286±4.0	40±1.0	120
450(P)	450±5.0	230±2.0	300±3.0	28±1.0	286±4.0	40±1.0	85
D500(P)	500±5.0	230±2.0	250±3.0	28±1.0	286±4.0	40±1.0	180
560M(P)	560±5.0	230±2.0	300±3.0	28±1.0	286±4.0	40±1.0	215
710(P)	710±5.0	230±2.0	250±1.0	28±1.0	286±4.0	40±1.0	475
710(P)	710±5.0	230±2.0	500±5.0	28±1.0	286±4.0	40±1.0	235
310(W)	310±3.0	150±2.0	150±1.0	16.0±1.0	182±4.0	39±1.0	35
350(W)	350±3.0	195±2.0	200±2.0	17.0±1.0	229±4.0	39±1.0	55
355(W)	355±5.0	200±2.0	300±3.0	28.0±1.0	256±4.0	40±1.0	50
400(W)	402±5.0	145±2.0	200±2.0	17.0±1.0	179±4.0	39±1.0	80
450(W)	438±5.0	195±2.0	278±3.0	17.0±1.0	229±4.0	39±1.0	80
450(AL-W)	438±5.0	238±3.0	189±2.0	17.0±1.0	272±5.0	39±1.0	40
452(W)	450±5.0	200±3.0	300±3.0	28.0±1.0	256±4.0	39±1.0	80
482(W)	482±5.0	200±3.0	325±5.0	28.0±1.0	256±4.0	39±1.0	90
500(AL-W)	500±5.0	235±3.0	200±2.0	19.0±1.0	273±5.0	39±1.0	65

500(W)	495±5.0	235±3.0	199±2.0	19.0±1.0	273±5.0	39±1.0	180
500(W)	500±5.0	220±2.0	325±5.0	28.0±1.0	276±4.0	39±1.0	90
560(W)	560±5.0	235±3.0	245±3.0	19.0±1.0	273±5.0	39±1.0	90
560(W)	560±5.0	235±3.0	245±3.0	19.0±1.0	273±5.0	39±1.0	100
560(W)	560±5.0	220±3.0	400±5.0	28.0±1.0	276±4.0	39±1.0	100
605(W)	605±5.0	220±3.0	455±5.0	28.0±1.0	276±4.0	39±1.0	110
610(W)	610±5.0	235±3.0	245±3.0	19.0±1.0	273±5.0	39±1.0	110
630(W)	633±5.0	280±3.0	300±3.0	19.0±1.0	318±5.0	39±1.0	130
635(W)	635±5.0	280±3.0	300±3.0	19.0±1.0	318±5.0	39±1.0	130
710(W)	710±5.0	240±3.0	460±5.0	38.0±1.0	376±4.0	40±1.0	250
900(W)	900±5.0	300±3.0	560±5.0	38.0±1.0	376±4.0	40±1.0	400
1000(W)	1000±5.0	300±3.0	660±5.0	38.0±1.0	376±4.0	40±1.0	500
Note:	AL- Aluminium	W- wooden	D- DIN	P- Plastic	CU-Copper	AL- Aluminium	W- wooden

Bureau of Indian Standards

BIS is a statutory institution established under the *Bureau of Indian Standards Act*, 1986 to promote harmonious development of the activities of standardization, marking and quality certification of goods and attending to connected matters in the country.

Copyright

BIS has the copyright of all its publications. No part of these publications may be reproduced in any form without the prior permission in writing of BIS. This does not preclude the free use, in the course of implementing the standard, of necessary details, such as symbols and sizes, type or grade designations. Enquiries relating to copyright be addressed to the Director (Publication), BIS.

Review of Indian Standards

Amendments are issued to standards as the need arises on the basis of comments. Standards are also reviewed periodically; a standard along with amendments is reaffirmed when such review indicates that no changes are needed; if the review indicates that changes are needed, it is taken up for revision. Users of Indian Standards should ascertain that they are in possession of the latest amendments or edition by referring to the) test issue of 'BIS Handbook' and 'Standards Monthly Additions'.

This Indian Standard has been developed from Doc :No ETD33(3293)

Amendments Issued Since Publication

Amend No.	Date of Issue	Text Affected

BUREAU OF INDIAN STANDARDS

Headquarters:

Manak Bhavan, 9 Bahadur Shah Zafar Marg, New Delhi 110002
Telephones: 323 01 31, 323 33 75, 323 94 02

Telegrams: Manaksanstha
(Common to all offices)

Regional Offices(

Telephone

Central Manak Bhavan, 9 Bahadur Shah Zafar Marg
NEW DELHI 110002

3237617, 3233841

Eastern 1/14 C.I.T. Scheme VIIM, V.I.P. Road, Maniktola
CALCUTTA 700054

{ 33784 99, 3378561
3378626, 3379120

Northern SCO 335-336, Sector 34-A, CHANDIGARH 160022

{ 603843
602025

Southern C.I.T. Campus, IV Cross Road, CHENNAI 600113

{ 2350216, 2350442
2351519, 2352315

Western Manakalaya, E9 MIDC, Marol, Andheri (East)
MUMBAI 400093

{ 83292 95, 83278 58
8327891, 8327892

Branches AHMADABAD. BANGALORE. BHOPAL. BHUBANESHWAR.
COIMBATORE. FARIDABAD. GHAZIABAD. GUWAHATI.
HYDERABAD. JAIPUR. KANPUR. LUCKNOW. NAGPUR.
PATNA. PUNE. THIRUVANANTHAPURAM.