

डीएमई मिश्रित द्रवित पेट्रोलियम गैस  
(LPG) ईंधन गैस क्रोमैटोग्राफी द्वारा  
डाइमिथाइल ईथर (DME) का मात्रात्मक  
निर्धारण

DME Blended Liquified  
Petroleum Gas (LPG) Fuel  
Quantitative Determination of  
Dimethyl Ether (DME) Content  
by Gas Chromatography

ICS 75.160.30

© BIS 2024



भारतीय मानक ब्यूरो  
BUREAU OF INDIAN STANDARDS  
मानक भवन, 9 बहादुर शाह ज़फर मार्ग, नई दिल्ली - 110002  
MANAK BHAVAN, 9 BAHADUR SHAH ZAFAR MARG  
NEW DELHI - 110002  
[www.bis.gov.in](http://www.bis.gov.in) [www.standardsbis.in](http://www.standardsbis.in)

Methods of Sampling and Test for Petroleum and Related Products of Natural or Synthetic Origin (excluding bitumen) Sectional Committee, PCD 01

## FOREWORD

This Indian Standard was adopted by the Bureau of Indian Standards, after the draft finalized by the Methods of Sampling and Test for Petroleum and Related Products of Natural or Synthetic Origin (excluding bitumen) Sectional Committee had been approved by the Petroleum, Coal and Related Products Division Council.

Liquified petroleum gas (LPG) is being used in India to cater to the energy needs of domestic, commercial and industrial sectors apart from use as automotive fuel. The consumption of LPG is ever increasing in the country. This necessitates use of alternate fuels to partially substitute LPG with fuel such as Dimethyl ether (DME). It is the simplest ether with oxygen connecting two methyl groups having no C-C bond. DME can be blended with LPG up to 20 percent by weight and the blended fuel can be used for cooking in households and other applications.

As there is no Indian Standard available for determination of Dimethyl ether (DME) content in DME – Liquified petroleum gas (LPG) blended fuel, this standard has been formulated.

The composition of the Committee responsible for the formulation of this standard is given in [Annex B](#).

In reporting the result of a test or analysis made in accordance with this standard, if the final value, observed or calculated, is to be rounded off, it shall be done in accordance with IS 2 : 2022 'Rules for rounding off numerical values (*second revision*)'.

*Indian Standard*

# DME- BLENDED LIQUIFIED PETROLEUM GAS (LPG) FUEL — QUANTITATIVE DETERMINATION OF DIMETHYL ETHER (DME) CONTENT BY GAS CHROMATOGRAPHY

**1 SCOPE**

This standard prescribes a method of test for quantitative determination of dimethyl ether (DME) content in DME-liquefied petroleum gas (LPG) blended fuel by gas chromatography. Component concentrations are determined in the range of 10 mass percent to 100 mass percent.

**2 REFERENCES**

The standards listed in [Annex A](#) contain provisions which, through reference in this text, constitute provisions of this standard. At the time of publication, the editions indicated were valid. All standards are subjected to revision and parties to agreements based on this standard are advised to use the latest edition of these standards:

**3 SUMMARY OF THE TEST METHOD****3.1 Outline of the Method**

DME-LPG blended sample is analyzed via gas sampling valves by gas chromatography and compared to corresponding components separated under identical operating conditions from pure DME reference standard. The chromatogram of the sample is interpreted by comparing peak retention times and areas with those obtained for the pure DME reference standard.

**3.2 Apparatus****3.2.1 Gas Chromatograph (GC)**

Any gas chromatographic instrument provided with a linear temperature programmable column oven. Multi-step column oven temperature programming is required, consisting of an initial hold time, an initial temperature program followed by an isothermal temperature hold and another programmed temperature rise. The temperature control shall be capable of obtaining a retention time repeatability of 0.05 min throughout the analysis. A flame ionization detector (FID) having sensitivity of 0.5 percent (mole) or less for the DME compound is strongly recommended.

**3.2.2 Data Acquisition**

Any commercial integrator or computerized data

acquisition system may be used for display of the chromatographic detector signal and peak area integration. The device shall be capable of calibration and reporting of the final response corrected results.

**3.2.3 Sample Introduction**

For gas sampling, a six-port gas sampling valve (GSV) with a 250 µl fixed sampling loop may be provided. This valve shall be contained in a heated enclosure and operated at a temperature above the boiling point of the highest boiling component in the sample.

**3.3 Gas Controls**

The GC shall be provided with suitable facilities for delivery and control of carrier gas and the detector gases. This will consist of the appropriate tank and downstream regulators and supply tubing as well as the mass or pressure controls for the precise regulation of the instrument operation.

**3.4 Columns**

Condition all columns used according to the manufacturers constructions prior to use. The recommended analytical column for this test method is 100 m length, internal diameter 0.25 mm and film thickness 0.5 µm of 100 percent Dimethylpolysiloxane capillary column.

**4 REAGENTS AND MATERIALS****4.1 Carrier Gases**

For carrier gases, it is recommended to install commercial active oxygen scrubbers and water dryers, such as molecular sieves, ahead of the instrument to protect the system's chromatographic columns. Follow manufacturer's instructions in the use of such gas purifiers and replace as necessary.

**4.1.1 Helium** — 99.995 percent minimum purity, < 0.1 ppm H<sub>2</sub>O. The use of appropriate scrubbers may be sufficient to obtain the desired purity.

**4.2 Detector Gases**

**4.2.1 Hydrogen** — 99.995 percent minimum purity. The use of appropriate scrubbers may be

sufficient to obtain the desired purity.

NOTE — Hydrogen is a flammable gas under high pressure.

**4.2.2 Nitrogen** — 99.995 percent minimum purity. The use of appropriate scrubbers may be sufficient to obtain the desired purity.

**4.2.3 Air** — less than 10 ppm each of total hydrocarbons and water. The use of appropriate scrubbers may be sufficient to obtain the desired purity.

NOTE — Improper handling of compressed gas cylinders containing air, nitrogen, hydrogen, or helium can result in an explosion. Rapid release of nitrogen or helium can result in asphyxiation.

### 4.3 Reference Standards

#### 4.3.1 Purity of Reagents

Reagent grade chemicals shall be used in all tests. Unless otherwise indicated, it is intended that all reagents conform to the specifications of the Committee on Analytical Reagents of the American Chemical Society where such specifications are available. Other grades may be used, provided it is first ascertained that the reagent is of sufficiently high purity to permit its use without lessening the accuracy of the determination.

#### 4.3.2 Reference DME Standard

Analytical grade DME reference standard commercially available and may be used to establish quantitative determination of DME content in DME-LPG blended fuel.

### 5 PREPARATION OF APPARATUS

**5.1** Set up the instrumentation in accordance with the manufacturer's instructions or as specified herein.

**5.2** Install and condition the column according to manufacturer's instructions.

**5.3** Set the GC instrument to the operating parameters. Allow the instrument to stabilize before proceeding with calibration and sample injections. Typical operating conditions for 100 percent dimethylpolysiloxane column are provided in [Table 1](#).

**5.4** Obtain duplicate chromatograms of the standard or sample, or both. Ensure that none of the peaks obtained have exceeded the upper range limit of the data handling device (at full scale on the data handling device, all peaks are on scale and display symmetrical, Gaussian shapes as opposed to flat peak tops). Use the same sample size (split ratio) and range for all runs. Example chromatograms are provided in [Fig. 1](#).

**Table 1 Typical Operating Conditions**

(Clauses [5.3](#) and [7.3.1](#))

SI No. (1)	Components (2)	Operating Conditions (3)
i)	Carrier Gas	Helium
ii)	Carrier Gas flow	2.0 ml/min
iii)		250 °C
iv)	Injection type	Split with split ratio 150 : 1
v)	Purge flow	3.0 ml/min
vi)	Injection volume	250 µl
vii)	Oven program	Initial temperature 35 °C for 10 min; First ramp at 2.5 °C/min to 120 °C hold for 0 min Second ramp at 15 °C/min to 220 °C hold for 5 min
viii)	Detector	FID Temperature: 250 °C Hydrogen flow: 40 ml/min Air flow: 400 ml/min Make-up gas: Nitrogen Make-up gas flow: 30 ml/min
ix)	Analysis time	55.6 min

## 5.5 Gas Sampling Valve

Set valve on and off times to comply with manufacturer's instructions

## 6 CALIBRATION AND STANDARDIZATION

### 6.1 Qualitative

Determine the retention time of DME by analyzing known reference standard in the same manner as the samples. Typical retention time of DME is 7.48 min.

### 6.2 Quantitative

Determine the quantity of DME in DME-LPG blended fuel is interpreted by comparing peak areas with those obtained for the pure DME reference standard.

## 7 PROCEDURE

### 7.1 Sampling

Sampling at the sample source and at the chromatograph shall always be done in a manner that ensures that a representative sample is being analyzed. Lack of precision and accuracy in using this test method can most often be attributed to improper sampling procedures.

### 7.2 Gas Sample Valve Injection

Flush a gas sample loop with 5 ml to 10 ml of standard and sample (approximate 45 s time), close cylinder valve, and allow the sample pressure to equilibrate to atmospheric pressure (stopped flow) before introducing the sample into the carrier gas stream.

### 7.3 Sample Analysis Procedure

**7.3.1** Adjust the instrument operating variables to the values specified in [Table 1](#).

**7.3.2** Equilibrate the chromatographic system and inject the air blank until a representative chromatogram is obtained.

**7.3.3** Inject an appropriate size DME reference standard into the injection port and start the analysis. Obtain a chromatogram and a peak integration report. Repeat the same standard for six times consecutively.

**7.3.4** Inject a minimum of one air blank to check for

carry over after six DME reference standards.

**7.3.5** Inject an appropriate size sample into the injection port and start the analysis. Obtain a chromatogram and a peak integration report. Repeat the sample in duplicate.

**7.3.6** Inject DME standard throughout the analysis, with a minimum of one injection at the end of sequence. One injection after every sixth sample analysis is recommended.

**7.3.7** Record the peak area response for each analyte of interest, if present. Note all observed peaks in the blank injection and exclude these as artifacts from any calculation.

## 8 SYSTEM SUITABILITY

**8.1** The percent RSD for peak area response of DME from the first six injections of the DME standard shall be  $\leq 10$  percent.

**8.2** The percent RSD for peak area response of DME from all injections of the DME standard throughout the analysis shall be  $\leq 10$  percent.

## 9 CALCULATION

**9.1** Identify DME peak by matching retention times with those for known reference standards. Obtain the area for DME peak.

$$\text{DME content (percent } m/m) = (A_{\text{sample}} / A_{\text{standard}}) \times \text{purity of standard}$$

where

$A_{\text{sample}}$  = Peak area of DME in sample; and

$A_{\text{standard}}$  = Mean peak area of DME in first six standard injections.

## 10 REPORT

Report the concentration of DME component as percent ( $m/m$ ), to the nearest 0.1 percent ( $m/m$ ).

## 11 PRECISION

### 11.1 Repeatability

The difference in two test results obtained by the same operator with the same apparatus in a given laboratory under constant operating conditions on test samples taken from the same laboratory sample should, in the long run in the normal and correct operation of the test method not exceed the values given in [Table 2](#).

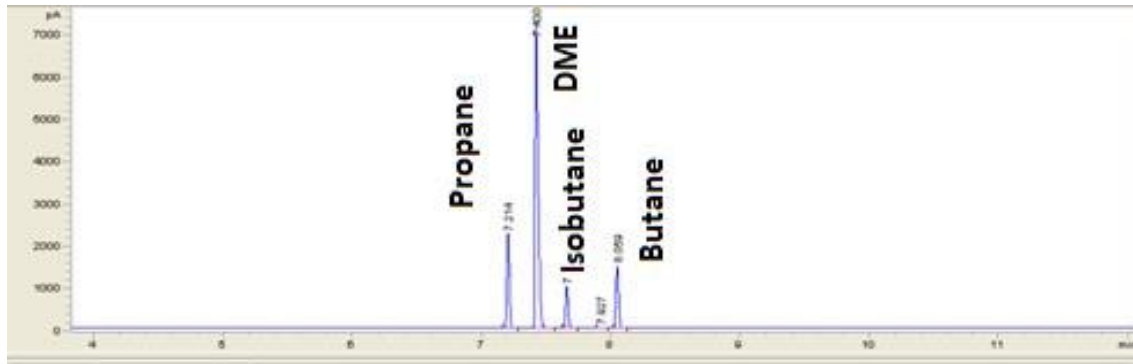


FIG. 1 EXAMPLE CHROMATOGRAM USING THE DIMETHYLPOLYSILOXANE COLUMN

Table 2 Repeatability Values of the Method Obtained with the 20 Percent DME-80 Percent LPG Blended Fuel

(Clause 11.1)

SI No.	Component	Concentration (percent <i>m/m</i> )	Repeatability
(1)	(2)	(3)	(4)
i)	DME	18.5	0.7

NOTE — Calculated average value of 6 replications.

## ANNEX A

*(Clause 2)*

## LIST OF REFERRED STANDARDS

<i>IS No.</i>	<i>Title</i>	<i>IS No.</i>	<i>Title</i>
IS 1447 (Part 2) : 2013/ ISO 4257 : 2001	Methods of sampling of petroleum and its products: Part 2 Liquefied petroleum gases — Method of sampling ( <i>second revision</i> )	(Part 151) : 2004/ISO 7941 : 1988	Commercial propane and butane — Analysis by gas chromatography
IS 1448	Methods of test for petroleum and its products:	IS 3196 (Part 1) : 2013	Welded low Carbon steel cylinders exceeding 5 litre water capacity for low pressure liquefiable gases: Part 1 Cylinders for liquefied petroleum gases (LPG) — Specification ( <i>sixth revision</i> )
(Part 71) : 2004/ ISO 4256 : 1996	Liquefied petroleum gases — Determination of gauge vapour pressure — LPG method ( <i>second revision</i> )	IS 4576 : 2021	Liquefied petroleum gases — Specification ( <i>fourth revision</i> )
(Part 72) : 2023	Volatility test of liquefied petroleum gases ( <i>first revision</i> )	IS 16704 : 2018/ ISO 16861 : 2015	Petroleum products — Fuels (Class F) — Specifications of dimethyl ether (DME)
(Part 76) : 2019/ ISO 3993 : 1984	Liquefied petroleum gases and light hydrocarbons — Determination of density or relative density — pressure hydrometer method ( <i>first revision</i> )		

To access Indian Standards click on the link below:

[https://www.services.bis.gov.in/php/BIS\\_2.0/bisconnect/knowyourstandards/Indian\\_standards/isdetails/](https://www.services.bis.gov.in/php/BIS_2.0/bisconnect/knowyourstandards/Indian_standards/isdetails/)

## ANNEX B

*(Foreword)*

## COMMITTEE COMPOSITION

Methods of Sampling and Test for Petroleum and Related Products of Natural or Synthetic Origin (excluding bitumen) Sectional Committee, PCD 01

<i>Organization</i>	<i>Representative(s)</i>
CSIR - Indian Institute of Petroleum, Dehradun	DR HARENDER SINGH BISHT ( <b>Chairperson</b> )
Air Headquarters, Ministry of Defence, New Delhi	WG CDR Y. BHARDWAJ WG CDR V. S. CHOUDHARY ( <i>Alternate</i> )
Bharat Petroleum Corporation Limited, Mumbai	SHRI R. SUBRAMANIAN SHRI C. SHANMUGANATHAN ( <i>Alternate</i> )
Castrol India Limited, Mumbai	SHRI RAMAN RAI
Central Institute of Plastics Engineering and Technology, Bhubaneswar	DR SMITA MOHANTY DR R. ANANTHAKUMAR ( <i>Alternate</i> )
Central Revenue Control Laboratory, New Delhi	SHRI V. SURESH
Chennai Petroleum Corporation Limited, Chennai	SHRI H. RAMAKRISHNAN SHRI M. BALAGURU ( <i>Alternate</i> )
CSIR - Central Institute for Mining and Fuel Research, Dhanbad	SHRI S. R. K. RAO SHRI P. K. SINGH ( <i>Alternate I</i> ) SHRI S. DUTTA ( <i>Alternate II</i> )
CSIR - Indian Institute of Petroleum, Dehradun	DR PANKAJ KUMAR KANAUIA DR G. D. THAKRE ( <i>Alternate</i> )
Directorate General of Aeronautical Quality Assurance, Ministry of Defence, New Delhi	SHRI PANKAJ CHAWLA DR MRINMOY GARAI ( <i>Alternate</i> )
Directorate General of Quality Assurance, Ministry of Defence, Kanpur	DR OM PRAKASH SINGH SHRI A. K. KANAUIA ( <i>Alternate</i> )
Elico Limited, Hyderabad	SHRI T. V. SHIVA K. RAO SHRI N. RAJU ( <i>Alternate</i> )
GAIL (India) Limited, New Delhi	DR NITYANANDA PANDA DR GOPAL DAYAL ( <i>Alternate</i> )
Gulf Oil Lubricants India Limited, Mumbai	SHRI CT CHIDAMBARAM SHRI MAYURESH GODBOLE ( <i>Alternate I</i> ) SHRI S. GANESH ( <i>Alternate II</i> )
HPCL Mittal Energy Limited, Noida	DR HEMANT TYAGI SHRI NARENDRA KUMAR GUPTA ( <i>Alternate</i> )
Hindustan Petroleum Corporation Limited, Mumbai	SHRI ELECHERAN KUMAR SHRI SANTOSH DHAKU BHOGALE ( <i>Alternate I</i> ) SHRI MAHESH TOTLA ( <i>Alternate II</i> )
Indian National Ship-Owners Association, Mumbai	SHRI CHITTA RANJAN DASH SHRI SHRIKANT SHYAMKANT MADIWALE ( <i>Alternate</i> )
Indian Oil Corporation Limited — Refineries and Pipelines Division, New Delhi	DR ASHUTOSH MISHRA DR SHASHI PAL SINGH ( <i>Alternate</i> )



<i>Organization</i>	<i>Representative(s)</i>
Indian Oil Corporation (MKTG), Mumbai	SHRI A. S. KRISHNAMOORTHY SHRI SREEKUMAR N. VEEDU ( <i>Alternate</i> )
Indian Oil Corporation (R and D Centre), Faridabad	DR AJAY KUMAR ARORA
Lubrizol India Limited, Mumbai	SHRI ANIL MANE SHRIMATI REENA KURIL ( <i>Alternate</i> )
Mangalore Refinery and Petrochemical Limited, Mangaluru	SHRI YOGEESSHA SHRI ANITHA SHETTY ( <i>Alternate I</i> ) SHRI R. M. PRAKSAH ( <i>Alternate II</i> )
Research Designs & Standards Organisation (RDSO), Lucknow	SHRI RAJESH SRIVASTAVA SHRI SONAM GUPTA ( <i>Alternate</i> )
National Test House, Kolkata	SHRI VINOD KUMAR AMIRCHANDRAM MS ISHITA SUR ( <i>Alternate</i> )
Nayara Energy Limited, Mumbai	SHRI NARHAR DESHPANDE SHRI KETANKUMAR PATEL ( <i>Alternate</i> )
Numaligarh Refinery Limited, Golaghat	SHRI K. SRINIVAS SHRI PARTHA JYOTI SHARMA ( <i>Alternate</i> )
Oil and Natural Gas Corporation Limited, New Delhi	SHRI GOUR MOHAN DASS SHRIMATI LEENA JOHN ( <i>Alternate I</i> ) SHRI DINESH S. R. REDDY KAKUTURI ( <i>Alternate II</i> )
Oil India Limited, Duliajan	SHRI SURAJIT BORA
Reliance Industries Limited, Mumbai	SHRI PRAMOD MALL
Shriram Institute for Industrial Research, Delhi	DR MUKESH GARG DR PRAVESH KUMAR ( <i>Alternate</i> )
BIS Directorate General	SHRIMATI MEENAL PASSI SCIENTIST 'F'/SENIOR DIRECTOR AND HEAD (PETROLEUM, COAL AND RELATED PRODUCT) [REPRESENTING DIRECTOR GENERAL ( <i>Ex-officio</i> )]

*Member Secretary*  
SHRI HARI MOHAN MEENA  
SCIENTIST 'C'/DEPUTY DIRECTOR  
(PETROLEUM, COAL AND RELATED PRODUCTS), BIS

Methods of Test for Gaseous Fuels Subcommittee, PCD 1 : 5

<i>Organization</i>	<i>Representative(s)</i>
In Personal Capacity, 1781 Sector-9 Faridabad-121006 <i>Haryana</i>	DR ANURAG A. GUPTA ( <b><i>Convenor</i></b> )
CSIR - Indian Institute of Petroleum, Dehradun	DR SUNIL KUMAR PATHAK DR GANESH NAIK ( <i>Alternate</i> )
GAIL (India) Limited, New Delhi	DR GOPAL DAYAL
Hindustan Petroleum Corporation Limited, Mumbai	SHRI SANTOSH DHAKU BHOGALE
Indian Oil Corporation Limited, New Delhi	SHRI M. SITHANATHAN
Mangalore Refinery and Petro Chemical Limited, Mangaluru	SHRI SUDHEER PAI M. SHRI UDAY. B ( <i>Alternate</i> )
Nayara Energy Limited, Mumbai	SHRI NARHAR DESHPANDE SHRI ARPAN SHAH ( <i>Alternate</i> )
Oil and Natural Gas Corporation Limited, New Delhi	SHRI DINESH S. R. REDDY KAKUTURI
Reliance India Limited, Mumbai	SHRI SHRIKANT SHINGTE
Shell India Markets Private Limited, Mumbai	SHRI SIVA KASTURI



## Bureau of Indian Standards

BIS is a statutory institution established under the *Bureau of Indian Standards Act, 2016* to promote harmonious development of the activities of standardization, marking and quality certification of goods and attending to connected matters in the country.

### Copyright

BIS has the copyright of all its publications. No part of these publications may be reproduced in any form without the prior permission in writing of BIS. This does not preclude the free use, in the course of implementing the standard, of necessary details, such as symbols and sizes, type or grade designations. Enquiries relating to copyright be addressed to the Head (Publication & Sales), BIS.

### Review of Indian Standards

Amendments are issued to standards as the need arises on the basis of comments. Standards are also reviewed periodically; a standard along with amendments is reaffirmed when such review indicates that no changes are needed; if the review indicates that changes are needed, it is taken up for revision. Users of Indian Standards should ascertain that they are in possession of the latest amendments or edition by referring to the website-[www.bis.gov.in](http://www.bis.gov.in) or [www.standardsbis.in](http://www.standardsbis.in).

This Indian Standard has been developed from Doc No.: PCD 01 (21671).

### Amendments Issued Since Publication

Amend No.	Date of Issue	Text Affected

## BUREAU OF INDIAN STANDARDS

### Headquarters:

Manak Bhavan, 9 Bahadur Shah Zafar Marg, New Delhi 110002

Telephones: 2323 0131, 2323 3375, 2323 9402

Website: [www.bis.gov.in](http://www.bis.gov.in)

### Regional Offices:

Central : 601/A, Konnectus Tower -1, 6<sup>th</sup> Floor,  
DMRC Building, Bhavbhuti Marg, New  
Delhi 110002

Telephones

{ 2323 7617

Eastern : 8<sup>th</sup> Floor, Plot No 7/7 & 7/8, CP Block, Sector V,  
Salt Lake, Kolkata, West Bengal 700091

{ 2367 0012  
{ 2320 9474

Northern : Plot No. 4-A, Sector 27-B, Madhya Marg,  
Chandigarh 160019

{ 265 9930

Southern : C.I.T. Campus, IV Cross Road, Taramani, Chennai 600113

{ 2254 1442  
{ 2254 1216

Western : 5<sup>th</sup> Floor/MTNL CETTM, Technology Street, Hiranandani Gardens, Powai  
Mumbai 400076

{ 25700030  
{ 25702715

**Branches :** AHMEDABAD, BENGALURU, BHOPAL, BHUBANESHWAR, CHANDIGARH, CHENNAI, COIMBATORE, DEHRADUN, DELHI, FARIDABAD, GHAZIABAD, GUWAHATI, HARYANA (CHANDIGARH), HUBLI, HYDERABAD, JAIPUR, JAMMU, JAMSHEDPUR, KOCHI, KOLKATA, LUCKNOW, MADURAI, MUMBAI, NAGPUR, NOIDA, PARWANOO, PATNA, PUNE, RAIPUR, RAJKOT, SURAT, VIJAYAWADA.