

स्थिर सस्थापन के लिए इंटरलॉक रहित
स्विच सॉकेट-आउटलेट — विशेष अपेक्षाएँ

(IEC 60884-2-3 : 2006, संशोधित)



(पहला पुनरीक्षण)

Switched Socket-Outlets without
Interlock for Fixed Installations —
Particular Requirements

(IEC 60884-2-3 : 2006, MOD)

(First Revision)

ICS 29.120.30

© BIS 2024



भारतीय मानक ब्यूरो
BUREAU OF INDIAN STANDARDS
मानक भवन, 9 बहादुर शाह ज़फर मार्ग, नई दिल्ली - 110002
MANAK BHAVAN, 9 BAHADUR SHAH ZAFAR MARG
NEW DELHI - 110002

www.bis.gov.in www.standardsbis.in

FOREWORD

This Indian Standard (First Revision) is adopted by the Bureau of Indian Standards, after the draft finalized by the Electrical Wiring Accessories Sectional Committee had been approved by the Electrotechnical Division Council.

This standard was first published in 2008 which was technically equivalent with IEC 60884-2-3 : 1989 'Plugs and socket outlets for household and similar purposes — Part 2-3: Particular requirements for switched socket-outlets without interlock for fixed installations'. This revision has been brought out to make it in line with latest practices.

This part applies to switched socket-outlets without interlock, for fixed installation for a.c. only, with or without earthing contact, with a rated voltage not exceeding 250 V and a rated current not exceeding 16 A, intended for household and similar purposes, either indoors or outdoors.

This standard shall be used in conjunction with IS 1293. This standard supplements or modifies the corresponding clauses in IS 1293, so as to convert that publication into the standard 'Switched socket-outlets without interlock for fixed installations — Particular requirements'. Where this standard states 'addition', 'modification' or 'replacement', the relevant requirement, test specifications or explanatory matter in IS 1293 shall be adapted accordingly. Sub-clauses, figures, tables or notes which are additional to those in IS 1293 are numbered starting from 101.

This standard is based on IEC 60884-2-3 : 2006 'Plugs and socket-outlets for household and similar purposes — Part 2-3: Particular requirements for switched socket-outlets without interlock for fixed installations'.

The composition of the Committee responsible for the formulation of this standard is given in [Annex A](#).

For the purpose of deciding whether a particular requirement of this standard is complied with, the final value, observed or calculated, expressing the result of a test or analysis, shall be rounded off in accordance with IS 2 : 2022 'Rules for rounding off numerical values (*second revision*)'. The number of significant places retained in the rounded off value should be the same as that of the specified value in this standard.

*Indian Standard***SWITCHED SOCKET-OUTLETS WITHOUT INTERLOCK FOR
FIXED INSTALLATIONS — PARTICULAR REQUIREMENTS***(First Revision)***1 SCOPE**

This clause of IS 1293 is applicable except as follows.

Replacement of the first paragraph:

This part applies to switched socket-outlets without interlock, for fixed installation, for a.c. only, with or without earthing contact, with a rated voltage not exceeding 250 V and a rated current not exceeding 16 A, intended for household and similar purposes, either indoors or outdoors.

NOTE — Switched socket-outlets can also be produced by combining a socket-outlet as per IS 1293 and a switch as per IS 3854. Integrated switched socket-outlets where separate testing as per IS 1293 and IS 3854 is not possible, shall meet the requirements of IS 15787.

2 NORMATIVE REFERENCES

This clause of IS 1293 is applicable.

3 DEFINITIONS

This clause of IS 1293 is applicable except as follows.

Addition:

3.101 Switched Socket-Outlet — Factory assembled unit consisting of a socket-outlet with a switch controlling the socket-outlet.

3.102 Multiple Switched Socket-Outlet — Accessory incorporating more than one switched socket-outlet, each socket-outlet being controlled by its own switch.

3.103 Switch — Device designed to make or break the current in one or more electric circuits.

3.104 One Operation — Transfer of the moving contacts from one operating position to another.

4 GENERAL REQUIREMENTS

This clause of IS 1293 is applicable.

5 GENERAL NOTES ON TESTS

This clause of IS 1293 is applicable.

6 RATINGS

This clause of IS 1293 is applicable except as follows.

Addition:

6.101 Switches of switched socket-outlets shall have current and voltage ratings not less than the socket-outlets they control.

7 Classification

This clause of IS 1293 is applicable except as follows.

7.2 Addition:

7.2.101 *Switched Socket-Outlets Are Classified:*

7.2.101.1 According to the method of actuating the switch:

- a) rotary switches;
- b) tumbler switches;
- c) rocker switches;
- d) push-button switches; and
- e) cord-operated switches.

7.2.101.2 According to the switching of the neutral:

- a) switched neutral; and
- b) unswitched neutral.

8 MARKING

This clause of IS 1293 is applicable except as follows.

8.1 *Addition after h):*

- j) symbol for mini-gap construction, if applicable.

8.2 *Addition before notes:*

- a) Mini-gap construction.....m
- b) Open position (off).....O
- c) Close position (on)I

Addition:

8.101 Terminals intended for the connection of line conductors shall be identified unless the method of connection is not important, is self-evident or is indicated on a wiring diagram. Such identification

IS 15787 : 2024

may take the form of a letter L or in the case of more than one such terminal, the letters L1, L2, L3, etc, which may be accompanied by an arrow or arrows pointing to the relevant terminal or terminals.

For two-pole, three-pole, and four-pole switches, terminals associated with any one pole shall have similar identification, if applicable, differing from that of the terminals associated with the other poles, unless the relationship is self-evident.

These indications shall not be placed on screws or any other easily removable parts. Compliance is checked by inspection.

9 CHECKING OF DIMENSIONS

This clause of IS 1293 is applicable.

10 PROTECTION AGAINST ELECTRIC SHOCK

This clause of IS 1293 is applicable except as follows.

Addition:

10.101 Knobs, operating levers, push-buttons, rockers and the like, for operating switches in switched socket-outlets, shall be of insulating material, unless their accessible metal parts are separated from the metal parts of the mechanism by double insulation or reinforced insulation or as an alternative, they are reliably connected to earth.

Compliance is checked by inspection and by the tests of [17](#) and [21](#).

10.102 Metal parts of the switch mechanism, such as the spindle or the pivot of the dolly or rocker that are not insulated from live parts shall not protrude from the enclosure.

Compliance is checked by inspection, if necessary, after the actuating member has been removed or broken.

NOTE — If the actuating member has to be broken, compliance is checked after the test of [28](#).

10.103 Metal parts of the switch mechanism, such as the spindle or the pivot of the dolly or rocker shall not be accessible when the switched socket-outlet is fixed as in normal use.

In addition, they shall be insulated from accessible metal parts, including metal frames supporting the base of flush-type switched socket-outlets, liable to be mounted in a metal box and from screws for fixing the base to its support.

The additional requirement does not apply if the metal parts of the mechanism are separated from live parts

in such a way that the creepage distances and clearances have at least twice the values specified in [27.1](#) or alternatively, if they are reliably connected to earth.

Compliance is checked by inspection and if necessary by measurement and by tests of [17](#) and [20](#).

11 PROVISION FOR EARTHING

This clause of IS 1293 is applicable.

12 TERMINALS AND TERMINATIONS

This clause of IS 1293 is applicable.

13 CONSTRUCTION OF FIXED SOCKET-OUTLETS

This clause of IS 1293 is applicable except as follows.

Addition:

13.101 Switches shall be constructed to match the number of poles on the socket-outlet, except that the neutral pole is not switched in unswitched neutral socket-outlets. The earthing contact is not considered as a pole and the earth circuit shall not be switched.

The position of the switch-operating member shall be such that it does not prevent, nor shall its correct operation be prevented by, the proper insertion of the corresponding plug or plugs.

13.102 Knobs of rotary switches shall be securely coupled to the shaft or part operating the mechanism. The knob is subjected for 1 min to an axial pull of 100 N. After this, knobs of switches having only one direction of operation are turned, if possible, without undue force, 100 times in the reverse direction. During the test, the knob shall not become detached.

13.103 The actuating member of a switch when released, shall automatically take up the position corresponding to that of the moving contacts, except that, for those with a single push-button, the actuating member may take up a single rest position. Compliance is checked by inspection and by manual test.

13.104 Switches shall be so constructed that the moving contacts can come to rest only in the 'on' or 'off' position, an intermediate position being, however, permissible if it corresponds to the intermediate position of the actuating member, and if the insulation between the fixed and moving contacts is then adequate.

Compliance is checked by inspection and if necessary by the test of [17.2](#) with the voltage applied between the fixed and moving contacts when in intermediate position.

13.105 Switches shall be constructed so that undue arcing cannot occur when the switch is operated slowly. Compliance is checked by actuating the switch, at the end of the test of [21](#), to break the circuit a further ten times, the actuating member being, however, moved steadily by hand over a period of 2 s. If possible, the contacts shall be stopped in an intermediate position, the actuating member then being released. During the tests, no sustained arcing shall occur.

13.106 Switched socket-outlets with switches operating more than one pole shall make and break all poles substantially simultaneously, except that for multi-pole switches with switched neutral, the neutral shall not make after or break before other poles. Compliance is checked by inspection and by manual test.

13.107 The action of the mechanism, if the covers or cover plate are removable for installation purposes, shall be independent of the presence of the covers or cover plate. Compliance is checked by connecting the switch, without cover or cover plate fitted, in series with a lamp and by operating the actuating member without undue force as in normal use. During the test, the lamp shall not flicker.

14 CONSTRUCTION OF PLUGS AND PORTABLE SOCKET-OUTLETS

This clause of IS 1293 is not applicable.

15 INTERLOCKED SOCKET-OUTLETS

This clause of IS 1293 is not applicable.

16 RESISTANCE TO AGEING, PROTECTION PROVIDED BY ENCLOSURES AND RESISTANCE TO HUMIDITY

This clause of IS 1293 is applicable.

17 INSULATION RESISTANCE AND ELECTRIC STRENGTH

This clause of IS 1293 is applicable except as follows.

17.1 Replacement of the last sentence:

The insulation resistance shall be not less than 5 M Ω , except for items g) and h) of [17.1.1](#), where the resistance shall not be less than 2 M Ω .

17.1.1 Addition:

For switches of switched socket-outlets, the insulation resistance is measured consecutively between all poles connected together and the body, with the switch in the closed position (on):

- a) Between each pole in turn and all others

connected to the body, with the switch in the closed position (on); and

- b) Between the terminals which are electrically connected together when the switch is in the closed position (on), the switch being in the open position (off).

The term 'body' used in f) and g) includes accessible metal parts, metal frames supporting the base of flush type switched socket-outlets, operating keys, metal foil in contact with the outer surface of accessible external parts and operating keys of insulation material, the point of anchorage of the cord, chain or rod for switches operated by such means, fixing screws of bases or covers and cover plates, external assembly screws, earthing terminals and any metal part of the mechanism if required to be insulated from live parts (*see* [10.102](#)).

18 OPERATION OF EARTHING CONTACTS

This clause of IS 1293 is applicable.

19 TEMPERATURE RISE

This clause of IS 1293 is applicable.

20 BREAKING CAPACITY

This clause of IS 1293 is applicable except as follows.

Addition:

Switches incorporated in switched socket-outlets shall have adequate making and breaking capacity.

The tests are made by means of an apparatus, the principle of which is as shown in [Fig. 101](#) and which is arranged to simulate normal operation. Switches are fitted with conductors as for the test of [19](#).

Switches are tested at 1.1 times the rated voltage and 1.25 times the rated current. They are subjected to 200 operations at a uniform rate of:

- a) 30 operations per minute, if the rated current 6 A; and
- b) 15 operations per minute, if the rated current 16 A.

For rotary switches intended to be operated in either direction, the actuating member is turned in one direction for half the total number of operations, and in the reverse direction for the remainder. The test is carried out by using an alternating current ($\cos \phi = 0.6 \pm 0.05$). During the test no sustained arcing shall occur. After the test, the specimen shall show no damage which may impair its further use.

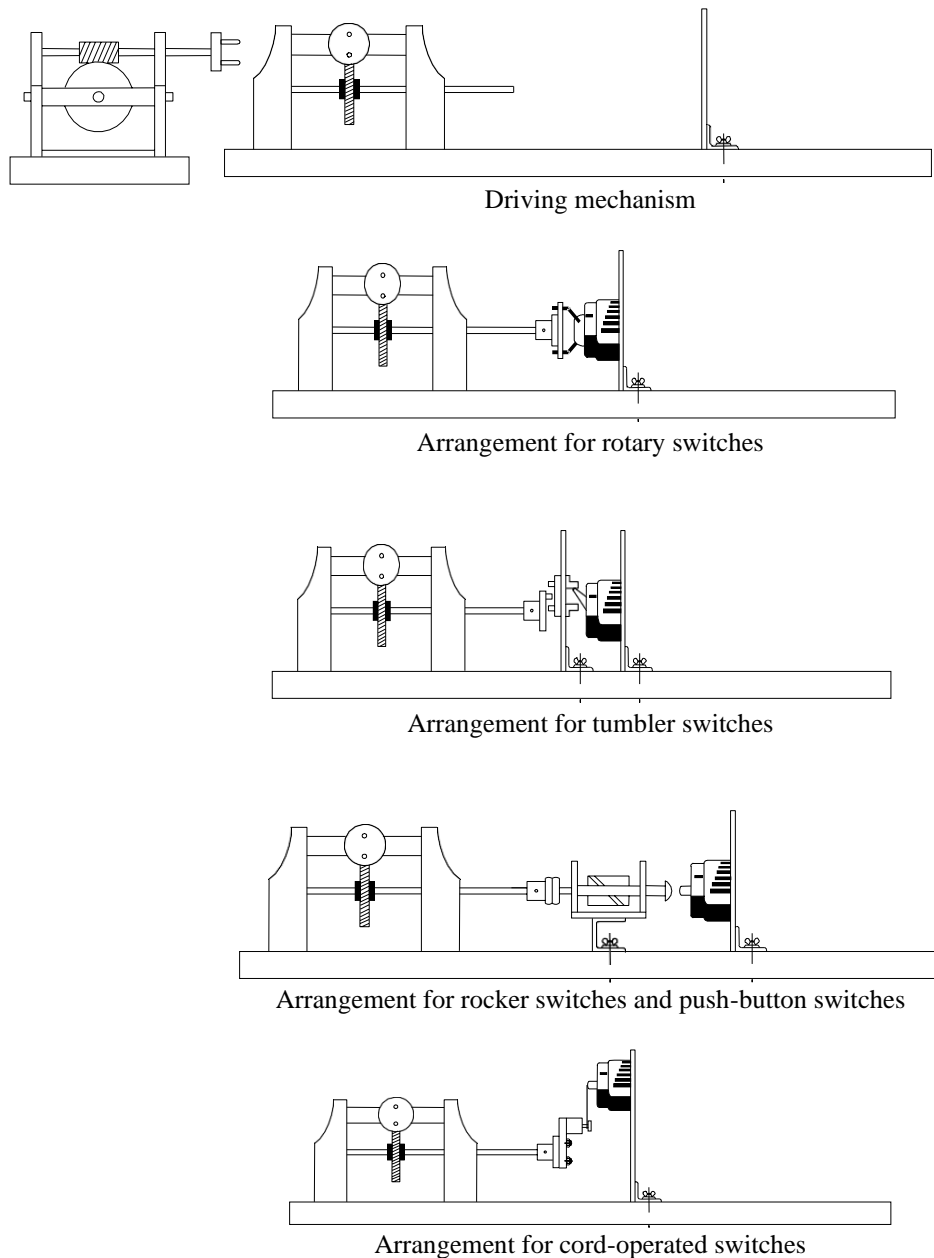


FIG. 101 EXAMPLE OF APPARATUS FOR TESTING THE MAKING AND BREAKING CAPACITY AND THE NORMAL OPERATION OF SWITCHES IN SWITCHED SOCKET-OUTLETS

21 NORMAL OPERATION

This clause of IS 1293 is applicable except as follows.

Addition:

Switches of switched socket-outlets shall withstand, without excessive wear or other harmful effect, the

mechanical, electrical and thermal stresses occurring in normal use. Compliance is checked by the following test:

The switches are tested at rated voltage and rated current ($\cos \phi = 0.8 \pm 0.05$) in the apparatus as specified in [20](#). The number of operations is as shown in [Table 101](#).

Table 101 Number of Operations for Normal Operations Test

(Clause 21)

Sl No. (1)	Rated Current (2)	Number of Operations (3)
i)	Up to and including 16 A for switches having a rated voltage not exceeding 250 V a.c.	40 000

The rate of operations is according to 20. For rotary switches intended to be operated in either direction, three-quarters of the total number of operations shall be in the clockwise direction and the remainder in the reverse direction.

During the test, the specimens shall function correctly. After the test, the specimens shall withstand an electric strength test as specified in 17, and a temperature rise test as specified in 19, the test current however being reduced to the rated current. The specimens shall then not show:

- a) Wear impairing their further use;
- b) Discrepancy between the position of the actuating member and that of the moving contacts, if the position of the actuating member is indicated;
- c) Deterioration of enclosures, insulating linings or barriers to such an extent that the switch cannot be further operated or that the requirements of 10 are no longer complied with;
- d) Loosening of electrical or mechanical connections;
- e) Seepage of sealing compound; and
- f) Relative displacement of the moving contacts of switches.

The humidity treatment according to 16.3 is not repeated before the dielectric strength test of this subclause. During the test, the specimens are not lubricated.

22 FORCE NECESSARY TO WITHDRAW THE PLUG

This clause of IS 1293 is applicable.

23 FLEXIBLE CABLES AND THEIR CONNECTION

This clause of IS 1293 is not applicable.

24 MECHANICAL STRENGTH

This clause of IS 1293 is applicable.

25 RESISTANCE TO HEAT

This clause of IS 1293 is applicable.

26 SCREWS, CURRENT-CARRYING PARTS AND CONNECTIONS

This clause of IS 1293 is applicable.

27 CREEPAGE DISTANCES, CLEARANCES AND DISTANCES THROUGH SEALING COMPOUND

This clause of IS 1293 is applicable except as follows.

Addition:

27.101 For switches incorporated in switched socket-outlets, creepage distances, clearances and distances through sealing compound shall be not less than the values shown in Table 102.

Table 102 Creepage Distances, Clearances and Distances Through Sealing Compound

(Clause 27.101)

Sl No. (1)	Description (2)	mm (3)
Creepage Distance		
i)	Between live parts which are separated when the contacts are open.	3
ii)	Between live parts and metal parts of the mechanism, if required to be insulated from live parts (see 10.102).	3
iii)	Between metal parts of the mechanism, if required to be insulated from accessible metal parts (see 10.103): <ol style="list-style-type: none"> a) screws or devices for fixing bases, covers or cover plates; b) metal frames supporting the base of flush-type switched socket-outlets; and c) accessible metal parts. 	3

Table 102 (Concluded)

Clearance		
iv)	Between live parts which are separated when the contacts are open.	3*
v)	Between live parts and metal parts of the mechanism, if required to be insulated from live parts (see 10.102).	3
vi)	Between metal parts of the mechanism, if required to be insulated from accessible metal parts (see 10.103): a) screws or devices for fixing bases, covers or cover plates; and b) metal frames supporting the base of flush-type switched socket-outlets accessible metal part.	3

Compliance is checked by measurement.

28 RESISTANCE OF INSULATING MATERIAL TO ABNORMAL HEAT, TO FIRE AND TO TRACKING

This clause of IS 1293 is applicable.

29 RESISTANCE TO RUSTING

This clause of IS 1293 is applicable.

30 ADDITIONAL TESTS ON PINS PROVIDED WITH INSULATING SLEEVES

This clause of IS 1293 is not applicable

* This value is reduced to 1.2 mm when the contacts are open, for live parts of switches of mini-gap construction which are moved during the separation of the contacts.

ANNEX A

(Foreword)

COMMITTEE COMPOSITION

Electrical Wiring Accessories Sectional Committee, ETD 14

<i>Organization</i>	<i>Representative(s)</i>
Central Public Works Department, New Delhi	SHRI VIMAL KUMAR (<i>Chairperson</i>)
All India Plastics Manufacturers Association, Mumbai	SHRI JAGAT KILLAWALA
All Kerala Small Scale PVC Pipe Manufacturers, Ernakulam	SHRI FAHAD HAMEED M. M. SHRI SHANKAR S. KUMAR (<i>Alternate</i>)
Central Electricity Authority, New Delhi	SHRI MATI KAVITA JHA SHRI ABHISHEK KUMAR SHARMA (<i>Alternate</i>)
Central Public Works Department, New Delhi	SHRI S. K. CHAWLA SHRI AWADHESH KUMAR (<i>Alternate</i>)
Consumer Voice, New Delhi	SHRI H. WADHWA
Dell Technologies, Gurugram	SHRI RAJENDER SAINI
Electrical Contractors Association of Maharashtra, Pune	SHRI SANJAY KOLHATKAR SHRI KAMLESH SHAH (<i>Alternate</i>)
Electrical Research and Development Association, Vadodara	SHRI RAKESH PATEL SHRI JITENDRA TAHILWANI (<i>Alternate</i>)
Fine Switchgears, Phagwara	SHRI SETHI MOHINDER SHRI SETHI ASHOK (<i>Alternate</i>)
Hager Electro Private Limited, New Delhi Havells India Limited, Noida	SHRI SHIRISH ZOPE SHRI NITESH KUMAR SHRI YOGESH SONAWANE (<i>Alternate</i>)
Honeywell Electrical Devices and Systems India Limited, Chennai	SHRI SUMIT JAIN SHRI ARVIND KUMAR (<i>Alternate</i>)
Indian Electrical and Electronics Manufacturers Association, New Delhi	SHRI RISHABH JOSHI SHRI NAVDEEP SINGH (<i>Alternate</i>)
Kinjal Electricals Private Limited, New Delhi	SHRI JAIN R. K. SHRI MOHIT JAIN (<i>Alternate</i>)
Manufacturers Association for Information Technology, New Delhi	SHRI A. A. JAFRI SHRI RISHI KANT VERMA (<i>Alternate</i>)
Ministry of Micro, Small and Medium Enterprises, New Delhi	SHRI S. V. SHARMA SHRI ANUJ KANSAL (<i>Alternate</i>)
Novateur Electrical and Digital Systems Private Limited, Chennai	SHRI SURESH DEOTALU SHRI V. A. TILEKAR (<i>Alternate</i>)

IS 15787 : 2024

<i>Organization</i>	<i>Representative(s)</i>
Panasonic Life Solutions India Private Limited, Gurugram	SHRI ROHIT PANDEY SHRI JAI BHAGWAN (<i>Alternate</i>)
Schneider Electric India Private Limited, Gurugram	SHRI SURESH RAJA SHRI GURVEEN SINGH SACHDEVA (<i>Alternate</i>)
V-Guard Industries Limited, Haridwar	SHRI ANIL KATIYAR SHRI ANKUSH KUMAR (<i>Alternate</i>)
Western India Electrical Accessories manufacturers Association, Mumbai	SHRI KISHORE K. NANDU SHRI KAPIL AJMERA (<i>Alternate I</i>) SHRI MITESH GOSRANI (<i>Alternate II</i>)
In Personal Capacity (<i>Gandhi Bhavan, Pune</i>)	SHRI HEMANT M. SALI
BIS Directorate General	SHRI ASIT KUMAR MAHARANA, SCIENTIST 'E'/ DIRECTOR AND HEAD (ELECTROTECHNICAL) [REPRESENTING DIRECTOR GENERAL (<i>Ex-officio</i>)]

Member Secretary
MISS NEHA AGARWAL
SCIENTIST 'D'/JOINT DIRECTOR
(ELECTROTECHNICAL), BIS

Bureau of Indian Standards

BIS is a statutory institution established under the *Bureau of Indian Standards Act, 2016* to promote harmonious development of the activities of standardization, marking and quality certification of goods and attending to connected matters in the country.

Copyright

BIS has the copyright of all its publications. No part of these publications may be reproduced in any form without the prior permission in writing of BIS. This does not preclude the free use, in the course of implementing the standard, of necessary details, such as symbols and sizes, type or grade designations. Enquiries relating to copyright be addressed to the Head (Publication & Sales), BIS.

Review of Indian Standards

Amendments are issued to standards as the need arises on the basis of comments. Standards are also reviewed periodically; a standard along with amendments is reaffirmed when such review indicates that no changes are needed; if the review indicates that changes are needed, it is taken up for revision. Users of Indian Standards should ascertain that they are in possession of the latest amendments or edition by referring to the website-www.bis.gov.in or www.standardsbis.in.

This Indian Standard has been developed from Doc No.: ETD 14 (21251).

Amendments Issued Since Publication

Amend No.	Date of Issue	Text Affected

BUREAU OF INDIAN STANDARDS

Headquarters:

Manak Bhavan, 9 Bahadur Shah Zafar Marg, New Delhi 110002

Telephones: 2323 0131, 2323 3375, 2323 9402

Website: www.bis.gov.in

Regional Offices:

	Telephones
Central : 601/A, Konnectus Tower -1, 6 th Floor, DMRC Building, Bhavbhuti Marg, New Delhi 110002	{ 2323 7617
Eastern : 8 th Floor, Plot No 7/7 & 7/8, CP Block, Sector V, Salt Lake, Kolkata, West Bengal 700091	{ 2367 0012 2320 9474
Northern : Plot No. 4-A, Sector 27-B, Madhya Marg, Chandigarh 160019	{ 265 9930
Southern : C.I.T. Campus, IV Cross Road, Taramani, Chennai 600113	{ 2254 1442 2254 1216
Western : 5 th Floor/MTNL CETTM, Technology Street, Hiranandani Gardens, Powai Mumbai 400076	{ 25700030 25702715

Branches : AHMEDABAD, BENGALURU, BHOPAL, BHUBANESHWAR, CHANDIGARH, CHENNAI, COIMBATORE, DEHRADUN, DELHI, FARIDABAD, GHAZIABAD, GUWAHATI, HARYANA (CHANDIGARH), HUBLI, HYDERABAD, JAIPUR, JAMMU, JAMSHEDPUR, KOCHI, KOLKATA, LUCKNOW, MADURAI, MUMBAI, NAGPUR, NOIDA, PARWANOO, PATNA, PUNE, RAIPUR, RAJKOT, SURAT, VIJAYAWADA.