
वस्त्रादि मशीनरी एवं सहायकांग — लपेटनें के लिये बीम

भाग 4 बनकर की बीम, ताना लपेटनें की बीम एवं अनुभागीय बीम
के लिये फ्लैन्जों के परीक्षण की विधि तथा गुणता वर्गीकरण

Textile Machinery and Accessories — Beams for Winding

Part 4 Test Methods and Quality Classification of Flanges for
Weaver's Beams, Warper's Beams and Sectional Beams

ICS 59.120.30

© BIS 2018



भारतीय मानक ब्यूरो
BUREAU OF INDIAN STANDARDS
मानक भवन, 9 बहादुरशाह ज़फर मार्ग, नई दिल्ली-110002
MANAK BHAVAN, 9 BAHADUR SHAH ZAFAR MARG
NEW DELHI — 110002
www.bis.gov.in www.standardsbis.in

NATIONAL FOREWORD

This Indian Standard (Part 4) which is identical with ISO 8116-4 : 2008 'Textile machinery and accessories — Beams for winding — Part 4 : Test methods and quality classification of flanges for weaver's beams, warper's beams and sectional beams' issued by the International Organization for Standardization (ISO) was adopted by the Bureau of Indian Standards on the recommendation of the Textiles Machinery and Accessories Sectional Committee and approval of the Textile Division Council.

The text of ISO Standard has been approved as suitable for publication as an Indian Standard without deviations. Certain conventions are however not identical to those used in Indian Standards. Attention is particularly drawn to the following:

- a) Wherever the words 'International Standard' appear referring to this standard, they should be read as 'Indian Standard'.
- b) Comma (,) has been used as a decimal marker while in Indian Standards, the current practice is to use a point (.) as the decimal marker.

In this adopted standard, reference appears to certain International Standards for which Indian Standards also exist. The corresponding Indian Standards, which are to be substituted in their places, are listed below along with their degree of equivalence for the editions indicated:

<i>International Standard</i>	Corresponding Indian Standard	<i>Degree of Equivalence</i>
ISO 8116-1 : 1995 Textile machinery and accessories — Beams for winding : Part 1 : General vocabulary	IS 16582 (Part 1) : 2016 Textile machinery and accessories — Beams for winding : Part 1 General vocabulary	Identical
ISO 8116-2 : 2008 Textile machinery and accessories — Beams for winding : Part 2 : Warper's beam	IS 16582 (Part 2) : 2016 Textile machinery and accessories — Beams for winding : Part 2 Warper's beams	do
ISO 8116-3 : 2008 Textile machinery and accessories — Beams for winding : Part 3 : Weaver's beam	IS 16582 (Part 3) : 2016 Textile machinery and accessories — Beams for winding : Part 3 Weaver's beam	do
ISO 8116-5 : 2008 Textile machinery and accessories — Beams for winding : Part 5 : Sectional beams for warp knitting machines	IS 16582 (Part 5) : 2016 Textile machinery and accessories — Beams for winding : Part 5 : Sectional beams for warp knitting machines	do

For the purpose of deciding whether a particular requirement of this standard is complied with, the final value, observed or calculated, expressing the result of a test or analysis, shall be rounded off in accordance with IS 2 : 1960 'Rules for rounding off numerical values (*revised*)'. The number of significant places retained in the rounded off value should be the same as that of the specified value in this standard.

Indian Standard
**TEXTILE MACHINERY AND ACCESSORIES —
BEAMS FOR WINDING**

**PART 4 TEST METHODS AND QUALITY CLASSIFICATION OF FLANGES FOR
WEAVER'S BEAMS, WARPERS' BEAMS AND SECTIONAL BEAMS**

1 Scope

This part of ISO 8116 specifies the test procedure for flanges for weaver's beams, warper's beams and sectional beams and the quality classes in this respect.

2 Normative references

The following referenced documents are indispensable for the application of this document. For dated references, only the edition cited applies. For undated references, the latest edition of the referenced document (including any amendments) applies.

ISO 8116-1, *Textile machinery and accessories — Beams for winding — Part 1: General vocabulary*

ISO 8116-2:2008, *Textile machinery and accessories — Beams for winding — Part 2: Warper's beams*

ISO 8116-3, *Textile machinery and accessories — Beams for winding — Part 3: Weaver's beams*

ISO 8116-5:2008, *Textile machinery and accessories — Beams for winding — Part 5: Sectional beams for warp knitting machines*

3 Terms and definitions

For the purposes of this document, the terms and definitions given in ISO 8116-1 and the following apply.

3.1

quality class

classification of beam flanges according to their deformation behaviour under load

3.2

maximum test load

F_{\max}

maximum value of load applied to the beam flange during testing according to its quality class

4 Quality classification

Beam flanges are classified according to four quality classes. The designation of the quality classes is Q1, Q2, Q3 or Q4.

Depending on the quality class, the beam flanges are loaded with different ultimate loads. These limit values are given in Clause 6.

For examples of application by quality class, see Annex A.

5 Test methods

5.1 Principle

The beam flange is subjected to a test load and the resulting deformation is measured.

For weaver's beams, the test load is applied to the flange via a beam barrel. For warper's beams and sectional beams, the load is applied to the beam flange via a pressure plate. A pressure ring with a defined inner diameter is used as an anvil.

The permanent deformation and the plastic deformation of the flange shall not exceed the defined limit values when the maximum load is applied.

5.2 Apparatus

5.2.1 Press device, with indications for the application of the test load.

5.2.2 Three dial gauges, for determination of deformation of the flange with an accuracy of 0,01 mm.

5.2.3 Measurement device, for joint installation of the three dial gauges on the bearing device, in an angle of 120° each.

5.2.4 Steel pressure ring.

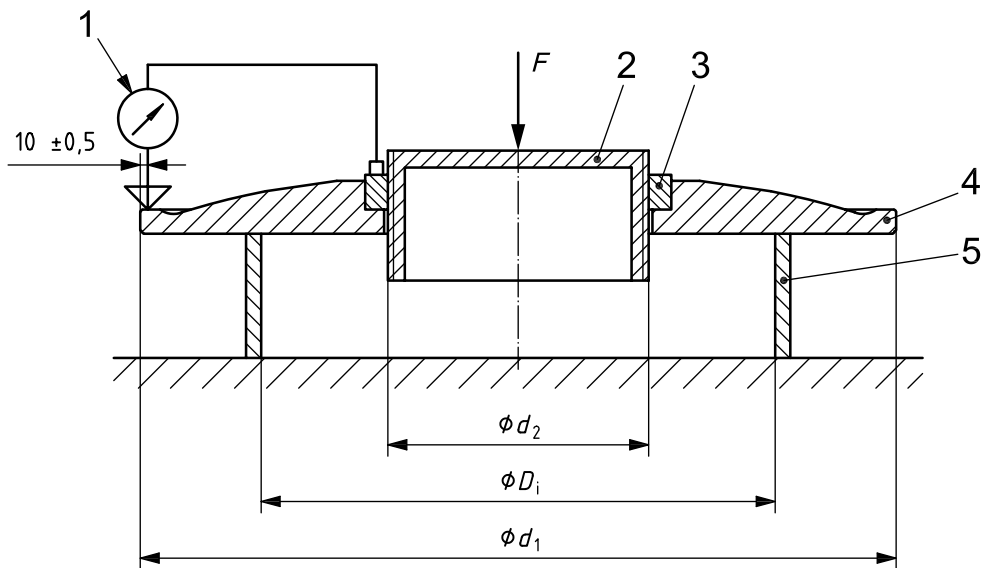
5.2.5 Beam barrel, for load application (for weaver's beams).

5.2.6 Pressure plate, for load application (for warper's beams and sectional beams).

5.3 Testing configuration

For measurement of flange deformation, three dial gauges are installed on the bearing device by means of the measurement device. These are used to measure the relative path between the outer diameter of the beam barrel d_2 and the circle diameter $d_1 - 20$ mm. The dial gauges are staggered by 120°. The testing configuration for weaver's beams is given in Figure 1. The testing configurations for warper's beams are given in Figure 2 and Figure 3. The testing configuration for sectional beams is given in Figure 4.

Dimensions in millimetres

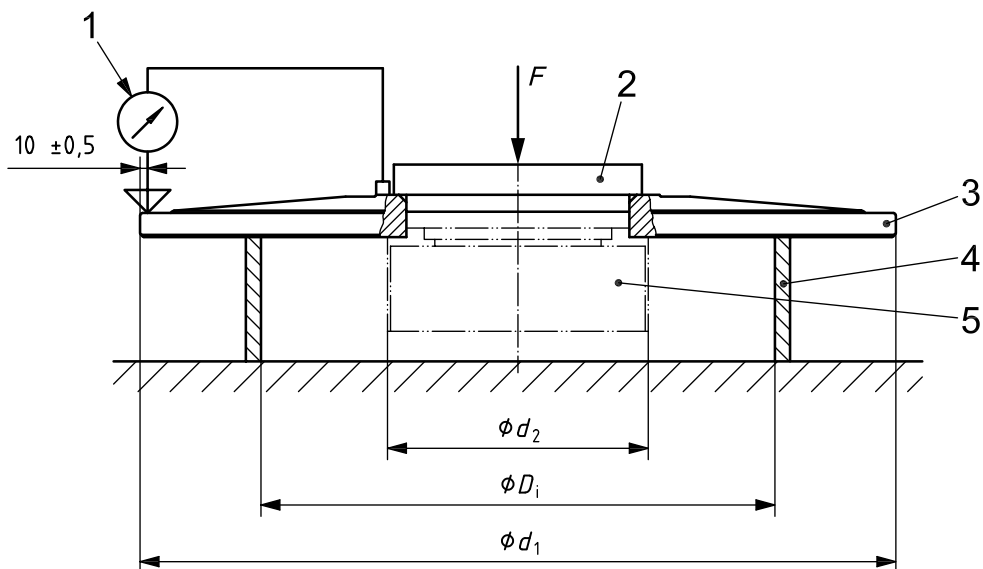


Key

- | | |
|---|--|
| 1 dial gauge (schematic representation) | d_1 outer diameter of weaver's beam flange |
| 2 beam barrel | d_2 outer diameter of weaver's beam barrel |
| 3 threaded ring | D_i inner diameter of pressure ring |
| 4 weaver's beam | |
| 5 steel pressure ring | |

Figure 1 — Testing configuration for weaver's beam

Dimensions in millimetres

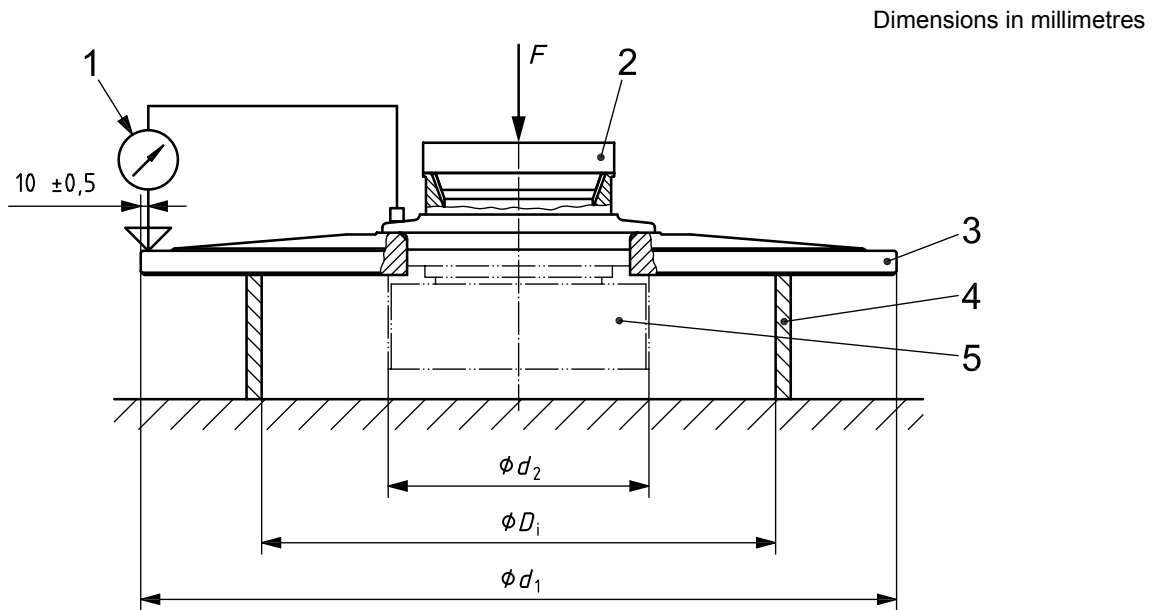


Key

- | | |
|---|--|
| 1 dial gauge (schematic representation) | d_1 outer diameter of warper's beam flange |
| 2 pressure plate | d_2 outer diameter of warper's beam barrel |
| 3 warper's beam | D_i inner diameter of pressure ring |
| 4 steel pressure ring | |
| 5 warper's beam barrel (not required for pressure test) | |

Figure 2 — Testing configuration for warper's beam flange with shaft (Type A) and cylindrical hole (Type B)

The diameter of the pressure plate for load application for warper's beams of Type A and Type B is defined as $d_2 - 20$ mm (see Figure 2).



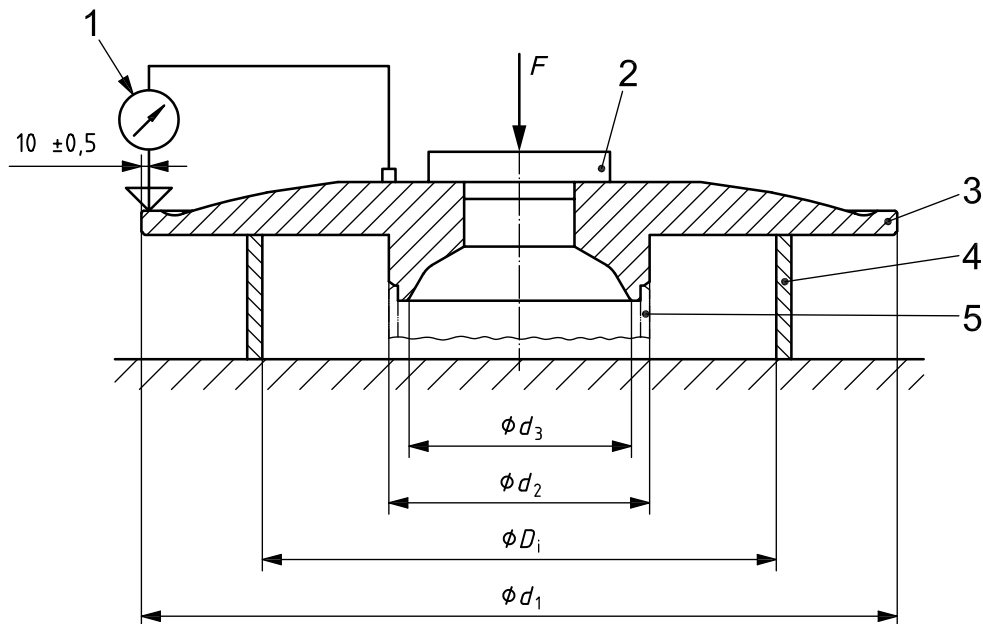
Key

- | | |
|---|--|
| 1 dial gauge (schematic representation) | d_1 outer diameter of warper's beam flange |
| 2 pressure plate | d_2 outer diameter of warper's beam barrel |
| 3 warper's beam flange | D_1 inner diameter of pressure ring |
| 4 steel pressure ring | |
| 5 warper's beam barrel (not required for pressure test) | |

Figure 3 — Testing configuration for warper's beam flange with tooth cone — Type C

The diameter of the pressure plate for load application for warper's beams with tooth cone (Type C) is defined using d_5 in accordance with ISO 8116-2:2008, Table 2.

Dimensions in millimetres



Key

- | | |
|--|--|
| 1 dial gauge (schematic representation) | d_1 outer diameter of sectional beam flange |
| 2 pressure plate | d_2 outer diameter of sectional beam barrel |
| 3 sectional beam flange | d_3 bore diameter of flange (see also ISO 8116-5:2008, Figure 1) |
| 4 steel pressure ring | D_i inner diameter of pressure ring |
| 5 sectional beam barrel (not required for pressure test) | |

Figure 4 — Testing configuration for sectional beams

The diameter of the pressure plate for load application for sectional beams of knitting machines is defined using $d_3 + 40$ mm.

5.4 Performance

The measurement device is installed as described in 5.3. The beam flange, the pressure ring and the pressure plate, if required, are aligned centrally below the press loading pad.

Stepwise loading of the flange shall occur in steps to be chosen usefully.

The load applied and the deformation are determined at the test area for each loading step. The value of the total deformation is calculated from the average of the three measurement values. After each load step, unloading of the flange is optional.

After unloading, the values indicated are read with the dial gauge. The values for the plastic deformation are calculated from the average of the three measurement values.

Then loading is applied with the next higher load value.

This procedure is repeated until the defined maximum test load of the corresponding quality class as given in Equation (2) and Table 1 is reached.

The beam flange corresponds to the quality class if the value measured for the total deformation and the value measured for the plastic deformation are below the values obtained when using Equation (3) and Equation (4).

Once the given maximum load has been achieved, the plastic deformation shall be measured after unloading. Subsequently, the dial gauges are set to "zero". The maximum test load shall again be applied. After unloading, only an insignificantly low residual deformation value shall be read.

6 Pressure ring diameter, maximum test load and limit values of deformation

The diameter of the pressure ring, maximum test load and limit values of deformation shall be calculated using Equations (1), (2) or (3) for any flange geometry:

- for weaver's beams in accordance with ISO 8116-3, the values are given in Table 2;
- for warper's beams in accordance with ISO 8116-2, the values are given in Table 3;
- for sectional beams in accordance with ISO 8116-5, the values are given in Table 4.

6.1 Pressure ring diameter

The diameter of the pressure ring is calculated, depending on the inner and outer diameter of the beam flange, using Equation (1):

$$D_i = \frac{2}{3} \times \frac{d_1^3 - d_2^3}{d_1^2 - d_2^2} \quad (1)$$

where

- D_i is the inner diameter of the pressure ring, in millimetres;
- d_1 is the outer diameter of the beam flange, in millimetres;
- d_2 is the outer diameter of the beam barrel, in millimetres.

The tolerance for the diameter of the pressure ring, D_i , may not exceed ± 1 mm.

NOTE Equation (1) corresponds to the centre of the diameter of a circular ring segment on the condition that the angle of the circular ring segment reaches zero. In practice, the actual load on the beam flange is different, depending on the winding.

6.2 Maximum test load

Depending on the quality class, the maximum test load is calculated from the maximum test load given in Table 1 multiplied by the maximum winding area of the beam flange, using Equation (2).

$$F_{\max} = A_{\max} \times p_i \quad (2)$$

where

- F_{\max} is the maximum test load, in kilonewtons;
- A_{\max} is the maximum winding area of the beam flange, in square millimetres;

$$A_{\max} = \frac{\pi}{4} \times (d_1^2 - d_2^2)$$

- p_i is the maximum test load, in megapascals.

Table 1 — Limit loads of quality classes

Quality class	Maximum test load p_i MPa
Q1	0,08
Q2	0,2
Q3	0,5
Q4	0,8

6.3 Limit value of deformation

The limit value of total deformation at maximum test load is calculated, depending on the geometry of the flange, using Equation (3):

$$f_{\text{tot-lim}} = \frac{4 \times (d_1 - d_2)}{1000} \quad (3)$$

where

$f_{\text{tot-lim}}$ is the admissible total flange deformation, in millimetres;

d_1 is the outer diameter of the beam flange, in millimetres;

d_2 is the outer diameter of the beam barrel, in millimetres.

The limit value of the plastic deformation at maximum test load amounts to a quarter of the limit value of total deformation in the case of initial loading of the beam flange.

If the maximum test load is again applied to the beam flange, as shown in Equation (4), the proportion of plastic deformation shall be insignificantly low.

$$f_{\text{plast-lim}} = \frac{f_{\text{tot-lim}}}{4} = \frac{(d_1 - d_2)}{1000} \quad (4)$$

where

$f_{\text{plast-lim}}$ is the admissible plastic flange deformation, in millimetres;

$f_{\text{tot-lim}}$ is the admissible total flange deformation, in millimetres;

d_1 is the outer diameter of the beam flange, in millimetres;

d_2 is the outer diameter of the beam barrel, in millimetres.

6.4 Values for weaver's beams

The values for the pressure ring diameter, the maximum test load and the limit values of deformation for weaver's beams in accordance with ISO 8116-3 are given in Table 2.

Table 2 — Test values for weaver’s beams in accordance with ISO 8116-3

Flange geometry		Pressure ring inner diameter D_i mm	Maximum test load of quality Class Q1				Limit values of flange deformations	
d_1 mm	d_2 mm		$F_{\max Q1}$ kN	$F_{\max Q2}$ kN	$F_{\max Q3}$ kN	$F_{\max Q4}$ kN	$f_{\text{tot-lim}}$ mm	$f_{\text{plast-lim}}$ mm
500	150	356	14	36	89	143	1,4	0,4
600	150	420	21	53	133	212	1,8	0,5
700	150	484	29	73	184	294	2,2	0,6
750	150	517	34	85	212	339	2,4	0,6
800	150	549	39	97	242	388	2,6	0,7
800	216	564	37	93	233	373	2,3	0,6
850	216	596	42	106	265	425	2,5	0,6
900	216	628	48	120	300	480	2,7	0,7
950	216	660	54	134	336	538	2,9	0,7
1 000	269	705	58	146	364	583	2,9	0,7
1 250	269	865	94	234	585	936	3,9	1,0
1 400	269	962	119	297	741	1 186	4,5	1,1
1 500	269	1 027	137	342	855	1 368	4,9	1,2

6.5 Values for warper’s beams

The values for the pressure ring diameter, the maximum test load and the limit values of deformation for warper’s beams in accordance with ISO 8116-2 are given in Table 3.

Table 3 — Test values for warper's beams in accordance with ISO 8116-2

Flange geometry		Pressure ring inner diameter D_i mm	Maximum test load of quality class Q1				Limit values of flange deformations	
d_1 mm	d_2 mm		$F_{\max Q1}$ kN	$F_{\max Q2}$ kN	$F_{\max Q3}$ kN	$F_{\max Q4}$ kN	$f_{\text{tot-lim}}$ mm	$f_{\text{plast-lim}}$ mm
800	300	588	35	86	216	346	2,0	0,5
800	320	594	34	84	211	338	1,9	0,5
815	300	597	36	90	225	361	2,1	0,5
815	320	603	35	88	221	353	2,0	0,5
900	300	650	45	113	283	452	2,4	0,6
900	320	656	44	111	278	445	2,3	0,6
915	300	659	47	117	293	469	2,5	0,6
915	320	665	46	115	289	462	2,4	0,6
1 000	300	713	57	143	357	572	2,8	0,7
1 000	320	718	56	141	352	564	2,7	0,7
1 015	300	722	59	148	369	591	2,9	0,7
1 015	320	728	58	146	364	583	2,8	0,7
1 100	360	793	68	170	424	679	3,0	0,7
1 250	300	872	93	231	578	925	3,8	1,0
1 250	320	877	92	229	573	917	3,7	0,9
1 250	400	898	88	220	551	881	3,4	0,9
1 400	450	1 006	110	276	690	1 104	3,8	1,0

NOTE To achieve the quality classes Q3 and Q4, deviations from the geometric provisions given in ISO 8116-2 are possible.

6.6 Values for sectional beams for knitting machines

The values for the pressure ring diameter, the maximum test load and the tolerances of deformation for sectional beams of knitting machines in accordance with ISO 8116-5 are given in Table 4.

Table 4 — Test values for sectional beams in accordance with ISO 8116-5

Flange geometry		Pressure ring inner diameter D_i mm	Maximum test load of quality class Q1				Limit values of flange deformations	
d_1 mm	d_2 mm		$F_{\max Q1}$ kN	$F_{\max Q2}$ kN	$F_{\max Q3}$ kN	$F_{\max Q4}$ kN	$f_{\text{tot-lim}}$ mm	$f_{\text{plast-lim}}$ mm
355	110	254	7	18	45	72	1,0	0,2
532	196	390	15	14	34	55	0,6	0,2
762	298	564	31	77	193	309	1,9	0,5
1 000	360	730	55	137	342	547	2,6	0,6

Annex A (informative)

Examples of application by quality class

A.1 Choice of quality class

In using beam flanges, the quality class is chosen depending on the load. See Table A.1 for examples of quality class for different yarn types and mean winding parameters

A.2 Effect of winding parameters on the loading

The following winding parameters have a decisive effect on the loading of the beam flanges:

- yarn characteristics (e.g. type, winding, titre, E-module, filament titre, lateral strain);
- parameter during winding process (warp traverse, winding stress);
- conditioning behaviour (e.g. relaxation, resulting winding density);
- winding diameter;
- barrel geometry.

Table A.1 — Examples of quality class for different yarn types and mean winding parameters

Quality class	Yarn type
Q1	Staple fibre yarns
Q2	Filament yarns from regenerated cellulosic fibres and silk
Q3	For synthetic multifilament yarns which are completely relaxed after the thread-forming spinning operation (FDY) ^a , e.g. polyamide, polyacrylonitrile, polyolefin
Q4	For synthetic multifilament yarns which are not completely relaxed after the thread-forming spinning operation (POY) ^b , e.g. polyamide, polyacrylonitrile, polyolefin, polyurethane
^a	Fully drawn yarn.
^b	Pre-oriented yarn.

Bureau of Indian Standards

BIS is a statutory institution established under the *Bureau of Indian Standards Act, 1986* to promote harmonious development of the activities of standardization, marking and quality certification of goods and attending to connected matters in the country.

Copyright

BIS has the copyright of all its publications. No part of these publications may be reproduced in any form without the prior permission in writing of BIS. This does not preclude the free use, in the course of implementing the standard, of necessary details, such as symbols and sizes, type or grade designations. Enquiries relating to copyright be addressed to the Director (Publications), BIS.

Review of Indian Standards

Amendments are issued to standards as the need arises on the basis of comments. Standards are also reviewed periodically; a standard along with amendments is reaffirmed when such review indicates that no changes are needed; if the review indicates that changes are needed, it is taken up for revision. Users of Indian Standards should ascertain that they are in possession of the latest amendments or edition by referring to the latest issue of 'BIS Catalogue' and 'Standards : Monthly Additions'.

This Indian Standard has been developed from Doc No. : TXD 14 (1310).

Amendments Issued Since Publication

Amend No.	Date of Issue	Text Affected

BUREAU OF INDIAN STANDARDS

Headquarters :

Manak Bhavan, 9 Bahadur Shah Zafar Marg, New Delhi 110002
Telephones : 2323 0131, 2323 3375, 2323 9402 Website : www.bis.org.in

Regional Offices :

Telephones

Central : Manak Bhavan, 9 Bahadur Shah Zafar Marg NEW DELHI 110002	{ 2323 7617 2323 3841
Eastern : 1/14 C.I.T. Scheme VII M, V. I. P. Road, Kankurgachi KOLKATA 700054	{ 2337 8499, 2337 8561 2337 8626, 2337 9120
Northern : Plot No. 4-A, Sector 27-B, Madhya Marg, CHANDIGARH 160019	{ 26 50206 265 0290
Southern : C.I.T. Campus, IV Cross Road, CHENNAI 600113	{ 2254 1216, 2254 1442 2254 2519, 2254 2315
Western : Manakalaya, E9 MIDC, Marol, Andheri (East) MUMBAI 400093	{ 2832 9295, 2832 7858 2832 7891, 2832 7892

Branches : AHMEDABAD. BENGALURU. BHOPAL. BHUBANESHWAR. COIMBATORE.
DEHRADUN. DURGAPUR. FARIDABAD. GHAZIABAD. GUWAHATI.
HYDERABAD. JAIPUR. JAMMU. JAMSHEDPUR. KOCHI. LUCKNOW. NAGPUR.
PARWANOO. PATNA. PUNE. RAIPUR. RAJKOT. VISAKHAPATNAM.