

भारतीय मानक  
Indian Standard

IS 15424 (Part 1) : 2018  
ISO 9182-1 : 2013

---

---

## दाब हेतु औजार — गाइड स्तम्भ

भाग 1 टाइप  
( पहला पुनरीक्षण )

## Tools for Pressing — Guide Pillars

Part 1 Types  
(First Revision)

ICS 25.120.10

© BIS 2018



भारतीय मानक ब्यूरो  
BUREAU OF INDIAN STANDARDS  
मानक भवन, 9 बहादुरशाह ज़फर मार्ग, नई दिल्ली-110002  
MANAK BHAVAN, 9 BAHADUR SHAH ZAFAR MARG  
NEW DELHI — 110002  
[www.bis.gov.in](http://www.bis.gov.in) [www.standardsbis.in](http://www.standardsbis.in)

July 2018

Price Group 1

## NATIONAL FOREWORD

This Indian Standard (Part 1) (First Revision) which is identical with ISO 9182-1 : 2013 'Tools for pressing — Guide pillars — Part 1: Types' issued by the International Organization for Standardization (ISO) was adopted by the Bureau of Indian Standards on the recommendation of the Metal Forming Machines Sectional Committee and approval of the Production and General Engineering Division Council.

This standard was first published in 2004 identical with ISO 9182-1 : 1992. The current revision of this standard has been undertaken to align with the latest version of international standard.

This Indian Standard has been issued in several parts. Other parts of this Indian Standard are:

- Part 2 Type A, straight pillars
- Part 3 Type B, end-locking pillars
- Part 4 Type C, pillars with taper lead and bush
- Part 5 Type D, end-locking pillars with flange

The text of ISO Standard has been approved as suitable for publication as an Indian Standard without deviations. Certain conventions are however not identical to those used in Indian Standards. Attention is particularly drawn to the following:

- a) Wherever the words 'International Standard' appear referring to this standard, they should be read as 'Indian Standard'.
- b) Comma (,) has been used as a decimal marker while in Indian Standards, the current practice is to use a point (.) as the decimal marker.

*Indian Standard*  
**TOOLS FOR PRESSING — GUIDE PILLARS**  
**PART 1 TYPES**

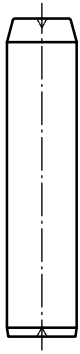
**1 Scope**

This part of ISO 9182 illustrates four main types of guide pillars and their methods of mounting.

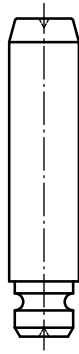
**2 Types, methods of mounting, and dimensions**

The guide pillars represented in [Figure 1](#) illustrate the types only; these representations shall not influence the manufacturer's design.

The detailed dimensions of each type of guide pillar are given in the appropriate part of ISO 9182. [Figure 2](#) shows an alternative form for guide pillar end.



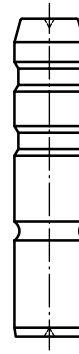
**Type A1** — Straight guide pillars



**Type A2** — Straight guide pillars with end-locking and locking ring



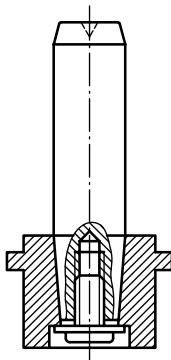
**Type B1** — End-locking guide pillars



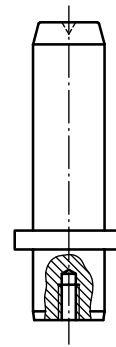
**Type B2** — End-locking guide pillars with lubricating grooves

**Type A** — Straight guide pillars (see ISO 9182-2)

**Type B** — End-locking guide pillars (see ISO 9182-3)

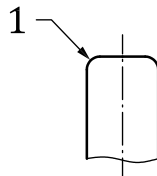


**Type C** — Guide pillars with taper lead and bush (see ISO 9182-4)



**Type D** — End-locking guide pillars with flange (see ISO 9182-5)

**Figure 1** — Guide pillar types



**Key**  
 1 radius

**Figure 2** — Alternative form for guide pillar end

## Bureau of Indian Standards

BIS is a statutory institution established under the *Bureau of Indian Standards Act, 2016* to promote harmonious development of the activities of standardization, marking and quality certification of goods and attending to connected matters in the country.

### Copyright

BIS has the copyright of all its publications. No part of these publications may be reproduced in any form without the prior permission in writing of BIS. This does not preclude the free use, in the course of implementing the standard, of necessary details, such as symbols and sizes, type or grade designations. Enquiries relating to copyright be addressed to the Director (Publications), BIS.

### Review of Indian Standards

Amendments are issued to standards as the need arises on the basis of comments. Standards are also reviewed periodically; a standard along with amendments is reaffirmed when such review indicates that no changes are needed; if the review indicates that changes are needed, it is taken up for revision. Users of Indian Standards should ascertain that they are in possession of the latest amendments or edition by referring to the latest issue of 'BIS Catalogue' and 'Standards : Monthly Additions'.

This Indian Standard has been developed from Doc No. : PGD 04 (1554).

### Amendments Issued Since Publication

Amend No.	Date of Issue	Text Affected

## BUREAU OF INDIAN STANDARDS

### Headquarters :

Manak Bhavan, 9 Bahadur Shah Zafar Marg, New Delhi 110002  
Telephones : 2323 0131, 2323 3375, 2323 9402 Website : www.bis.org.in

### Regional Offices :

	Telephones
Central : Manak Bhavan, 9 Bahadur Shah Zafar Marg NEW DELHI 110002	{ 2323 7617 2323 3841
Eastern : 1/14 C.I.T. Scheme VII M, V. I. P. Road, Kankurgachi KOLKATA 700054	{ 2337 8499, 2337 8561 2337 8626, 2337 9120
Northern : Plot No. 4-A, Sector 27-B, Madhya Marg, CHANDIGARH 160019	{ 26 50206 265 0290
Southern : C.I.T. Campus, IV Cross Road, CHENNAI 600113	{ 2254 1216, 2254 1442 2254 2519, 2254 2315
Western : Manakalaya, E9 MIDC, Marol, Andheri (East) MUMBAI 400093	{ 2832 9295, 2832 7858 2832 7891, 2832 7892

**Branches :** AHMEDABAD. BENGALURU. BHOPAL. BHUBANESHWAR. COIMBATORE. DEHRADUN. DURGAPUR. FARIDABAD. GHAZIABAD. GUWAHATI. HYDERABAD. JAIPUR. JAMMU. JAMSHEDPUR. KOCHI. LUCKNOW. NAGPUR. PARWANOO. PATNA. PUNE. RAIPUR. RAJKOT. VISAKHAPATNAM.