

---

---

द्रवचालित तरल पावर — वाल्व —  
दाब/विभेदक प्रवाह लक्षण ज्ञात करना  
(दूसरा पुनरीक्षण)

**Hydraulic Fluid Power — Valves —  
Determination of Pressure  
Differential /Flow Characteristics**  
( *Second Revision* )

ICS 23.100.50

© BIS 2023  
© ISO 2019



भारतीय मानक ब्यूरो  
BUREAU OF INDIAN STANDARDS  
मानक भवन, 9 बहादुर शाह ज़फर मार्ग, नई दिल्ली - 110002  
MANAK BHAVAN, 9 BAHADUR SHAH ZAFAR MARG  
NEW DELHI - 110002  
[www.bis.gov.in](http://www.bis.gov.in) [www.standardsbis.in](http://www.standardsbis.in)

## NATIONAL FOREWORD

This Indian Standard (Second Revision) which is identical with ISO 4411 : 2019 ‘Hydraulic fluid power — Valves — Determination of differential pressure/flow rate characteristics’ issued by the International Organization for Standardization (ISO), was adopted by the Bureau of Indian Standards on recommendation of the Fluid Power Systems Sectional Committee and approval of the Production and General Engineering Division Council.

In hydraulic fluid power systems, power is transmitted and controlled through a liquid under pressure within an enclosed circuit. Hydraulic valves control the direction, pressure or flow rate of the fluid in the system.

When fluid flows through a valve, it encounters some resistance, which results in a loss of pressure; this loss is called the pressure differential.

This Indian Standard is intended to unify testing methods for hydraulic fluid power valves to enable the pressure differential/flow characteristics of different valves to be compared.

This standard was originally published in 1992 and subsequently revised in 2013. This revision has been undertaken to align it with the latest version of ISO 4411.

The major changes in this revision are as follows:

- a) “volume flow rate” is replaced with “flow rate”;
- b) “flow rate symbol “ $q_v$ ” is replaced with “ $q$ ”; and
- c) updated and improved quality of Figure 1 and Figure 2.

The text of ISO Standard has been approved as suitable for publication as an Indian Standard without deviations. Certain conventions are, however, not identical to those used in Indian Standards. Attention is particularly drawn to the following:

- a) Wherever the words ‘International Standard’ appear referring to this standard, they should be read as ‘Indian Standard’.
- b) Comma (,) has been used as a decimal marker while in Indian Standards, the current practice is to use a point (.) as the decimal marker.

In this adopted standard, reference appears to certain International Standards for which Indian Standards also exist. The corresponding Indian Standards, which are to be substituted in their respective places, are listed below along with their degree of equivalence for the editions indicated.

<i>International Standard</i>	<i>Corresponding Indian Standard</i>	<i>Degree of Equivalence</i>
ISO 4401 Hydraulic fluid power — Four-port directional control valves — Mounting surfaces	IS 10187 : 2013 Hydraulic fluid power — Four-port directional control valves — Mounting surfaces	Identical with ISO 4401 : 2005
ISO 5598 Fluid power systems and components — Vocabulary*	IS 10416 : 2019 Fluid power systems and components — Vocabulary	Identical with ISO 5598 : 2008

(Continued on third cover)

# Contents

Page

<b>Introduction</b> .....	<b>iv</b>
<b>1 Scope</b> .....	<b>1</b>
<b>2 Normative references</b> .....	<b>1</b>
<b>3 Terms and definitions</b> .....	<b>1</b>
<b>4 Symbols and units</b> .....	<b>2</b>
<b>5 Test installations</b> .....	<b>2</b>
5.1 Selection, calibration and installation of equipment.....	2
5.2 Test circuit.....	2
5.3 Pressure-tapping points.....	4
<b>6 Test procedures</b> .....	<b>5</b>
6.1 Measurement accuracy.....	5
6.2 Test fluid.....	5
6.3 Temperatures.....	5
6.4 Steady-state conditions.....	5
6.5 Procedure.....	6
6.6 Pressure differential calculation.....	6
6.7 Presentation of the test results.....	6
6.7.1 General.....	6
6.7.2 Presentation.....	6
<b>7 Identification statement (Reference to this document)</b> .....	<b>7</b>
<b>Annex A (informative) Use of practical units</b> .....	<b>8</b>
<b>Annex B (informative) Pre-test checklist</b> .....	<b>9</b>
<b>Bibliography</b> .....	<b>10</b>

## **Introduction**

In hydraulic fluid power systems, power is transmitted and controlled through a liquid under pressure within an enclosed circuit. Hydraulic valves control the direction, pressure or flow rate of the fluid in the system.

When fluid flows through a valve, it encounters some resistance, which results in a loss of pressure; this loss is called the pressure differential.

This document is intended to unify testing methods for hydraulic fluid power valves to enable the pressure differential/flow characteristics of different valves to be compared.

*Indian Standard*

# HYDRAULIC FLUID POWER — VALVES — DETERMINATION OF PRESSURE DIFFERENTIAL /FLOW CHARACTERISTICS

( *Second Revision* )

## 1 Scope

This document specifies methods for determining, under steady-state conditions, the pressure differential caused by the flow through any given path in a hydraulic fluid power valve. Requirements for test installations, procedures and presentation of results are specified.

## 2 Normative references

The following documents are referred to in the text in such a way that some or all of their content constitutes requirements of this document. For dated references, only the edition cited applies. For undated references, the latest edition of the referenced document (including any amendments) applies.

ISO 4401, *Hydraulic fluid power — Four-port directional control valves — Mounting surfaces*

ISO 5598, *Fluid power systems and components — Vocabulary*

ISO 5781, *Hydraulic fluid power — Pressure-reducing valves, sequence valves, unloading valves, throttle valves and check valves — Mounting surfaces*

ISO 6263, *Hydraulic fluid power — Compensated flow-control valves — Mounting surfaces*

ISO 6264, *Hydraulic fluid power — Pressure-relief valves — Mounting surfaces*

ISO 9110-1, *Hydraulic fluid power — Measurement techniques — Part 1: General measurement principles*

ISO 9110-2, *Hydraulic fluid power — Measurement techniques — Part 2: Measurement of average steady-state pressure in a closed conduit*

ISO 10372, *Hydraulic fluid power — Four- and five-port servovalves — Mounting surfaces*

## 3 Terms and definitions

For the purposes of this document, the terms and definitions given in ISO 5598 and the following apply.

ISO and IEC maintain terminological databases for use in standardization at the following addresses:

— IEC Electropedia: available at <https://www.electropedia.org/>

— ISO Online browsing platform: available at <http://www.iso.org/obp>

### 3.1

#### **tare pressure differential**

pressure loss between the pressure-tapping points as generated by the test equipment exclusive of the test valve

### 3.2

#### **measured pressure differential**

measured pressure loss between the pressure-tapping points, including the pressure loss through the test valve and the test equipment

**3.3  
flow rate**

$q$   
rate of flow at the point of measurement

**3.4  
pressure differential**

$\Delta p$   
pressure loss attributed to the test valve

**4 Symbols and units**

4.1 The symbols and units used throughout this document are shown in [Table 1](#).

4.2 The graphical symbols used in [Figures 1](#) to [3](#) are in accordance with ISO 1219-1.

**Table 1 — Symbols and units**

Reference subclause	Quantity	Symbol	Dimension <sup>a</sup>	Unit <sup>b</sup>
<a href="#">3.3</a>	Flow rate	$q$	$l^3t^{-1}$	m <sup>3</sup> /s
<a href="#">3.4</a>	Pressure differential	$\Delta p$	$ml^{-1}t^{-2}$	Pa <sup>c</sup>
—	Inside diameter of tube	$d$	$l$	m
—	Temperature	$\theta$	$\Theta$	°C
—	Kinematic viscosity	$\nu$	$l^2t^{-1}$	m <sup>2</sup> /s
—	Mass density	$\rho$	$ml^{-3}$	kg/m <sup>3</sup>

<sup>a</sup>  $m$  signifies mass,  $l$  signifies length,  $t$  signifies time.  
<sup>b</sup> The use of practical units for the presentation of results is described in [Annex A](#).  
<sup>c</sup> 1 Pa = 1 N/m<sup>2</sup>.

**5 Test installations**

NOTE [Annex B](#) provides a checklist for the selection of appropriate items upon which agreement between the parties concerned is recommended prior to testing.

**5.1 Selection, calibration and installation of equipment**

5.1.1 Equipment shall be selected in accordance with ISO 9110-2.

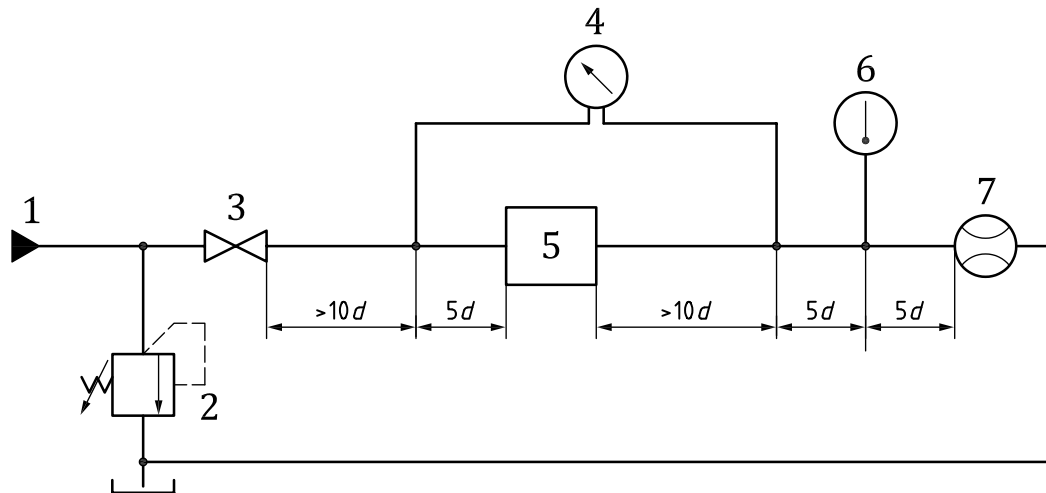
5.1.2 Calibration shall be carried out in accordance with ISO 9110-1.

5.1.3 The test set-up shall be in accordance with ISO 9110-2.

**5.2 Test circuit**

5.2.1 A circuit suitable for testing valves as shown in [Figure 1](#) shall be used. The requirements for the position of the pressure-measuring connections and the flow meter shown in [Figure 1](#) and referred to in [5.2.5](#) to [5.2.9](#) apply only to Class A measurement accuracy.

[Figure 1](#) illustrates a basic circuit that does not incorporate all the safety devices necessary to protect against damage in the event of component failure. It is important that those responsible for carrying out the test give due consideration to safeguarding both personnel and equipment.



**Key**

- 1 controllable flow supply, at controlled fluid temperature
- 2 relief valve (circuit protection)
- 3 stop valve (normally fully open)
- 4 differential pressure measuring device
- 5 test valve
- 6 temperature measuring device
- 7 flow meter

**Figure 1 — Test circuit diagram**

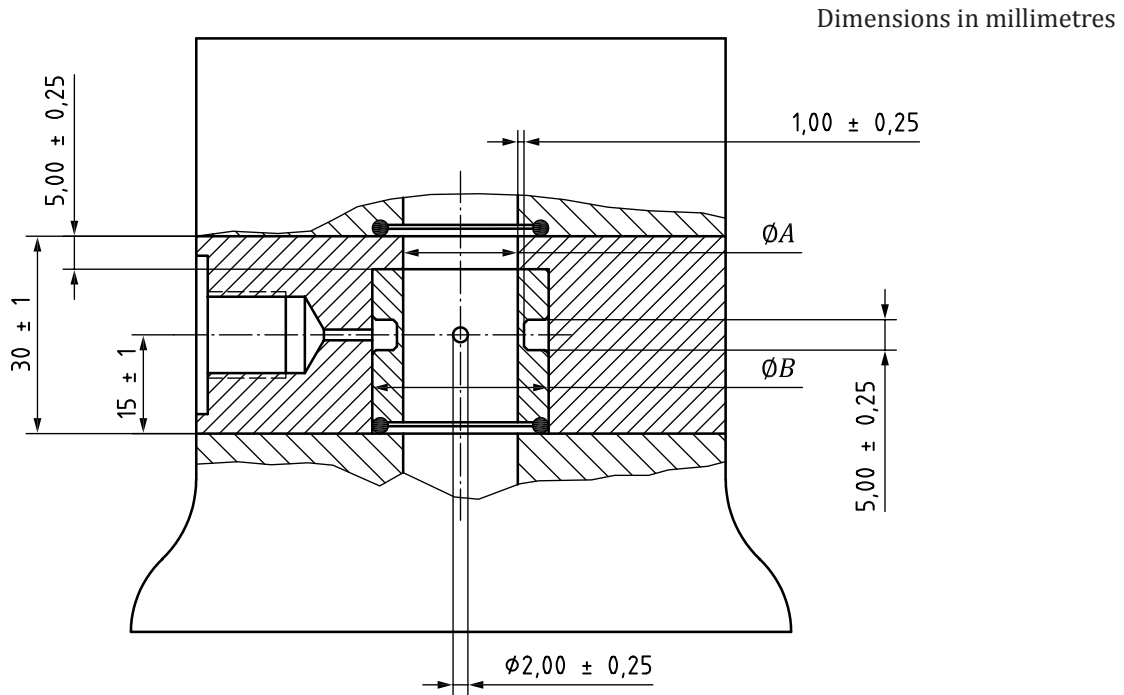
**5.2.2** On subplate-mounted valves and sandwich-mounted valves, measurements should be carried out using standard pressure-tapping plates (intermediate plates) as shown in [Figure 2](#). In this case, the requirements given in [5.2.5](#) to [5.2.8](#) and [5.3](#) do not apply.

Dimension *A* shall be the maximum port size specified in ISO 4401, ISO 5781, ISO 6263, ISO 6264 or ISO 10372 for the valve being tested.

Dimension *B* shall be appropriate for the selected interface O-ring.

The threaded port size shall be appropriate for the flow rating of the valve.

Only one port is shown, which would be typical for P, T, A and B ports.



**Figure 2 — Standard pressure-tapping plate for subplate-mounted valves**

**5.2.3** A fluid supply with controllable flow rate shall be used.

**5.2.4** A relief valve shall be installed to protect the circuit from excessive pressure.

**5.2.5** To establish a steady flow pattern at the upstream tapping, a visibly straight, uniform-bore tube length of at least  $10d$  shall be used.

**5.2.6** A visibly straight, uniform-bore tube length of at least  $5d$  shall be used between the upstream pressure tapping and the valve.

**5.2.7** To ensure adequate pressure recovery, a visibly straight, uniform-bore tube length of at least  $10d$  shall be used between the test valve and the downstream pressure tapping.

**5.2.8** A visibly straight, uniform-bore tube length of at least  $5d$  shall be used between the downstream pressure tapping and the temperature measuring point.

**5.2.9** A flow meter shall be installed to measure the flow rate at a point at least  $5d$  downstream of the tube length described in [5.2.8](#). Turbines or thermal meters that do not contain flow straighteners should be installed at least  $10d$  downstream.

**5.2.10** Tubes and connectors consistent with the port size of the valve shall be used.

### **5.3 Pressure-tapping points**

**5.3.1** Static pressure measuring connections shall be used in accordance with ISO 9110-2.

**5.3.2** For all classes of measurement accuracy, single pressure tapping shall be used.

**5.3.3** Tapping shall not be installed on the lowest point of the tube.



## 6 Test procedures

### 6.1 Measurement accuracy

The test shall be carried out to one of three classes of measurement, A, B or C, as defined in ISO 9110-1. The measurement class shall be as agreed between the parties concerned. Permissible systematic errors for the measurement classes shall be as shown in [Table 2](#).

**Table 2 — Permissible systematic errors of measuring instruments as determined during calibration**

Parameter of measuring instrument	Permissible systematic errors for classes of measurement accuracy		
	A	B	C
Flow rate, $q$ , expressed in percent	±1,0	±2,0	±3,0
Differential pressure, $\Delta p$ , expressed in percent	±1,0	±3,0	±5,0
Temperature, expressed in kelvins	±0,5	±1,0	±2,0

### 6.2 Test fluid

**6.2.1** A test fluid approved by the manufacturer of the valve shall be used when carrying out the tests. A description of the fluid shall be recorded, and its mass density,  $\rho$ , and kinematic viscosity,  $\nu$ , for the range of temperature used in the test shall be stated.

**6.2.2** The fluid cleanliness level shall be maintained within the limits recommended by the valve manufacturer.

**6.2.3** For class A or B measurement accuracy, the mass density,  $\rho$ , and the kinematic viscosity,  $\nu$ , from fluid samples taken from the test installation shall be measured immediately before the test.

**6.2.4** For class C measurement accuracy, it is permissible to use density and viscosity data obtained from the fluid supplier.

### 6.3 Temperatures

**6.3.1** The fluid temperature shall be controlled during the test within the limits specified in [Table 3](#).

**Table 3 — Permissible variation in indicated fluid temperature**

Class of measurement accuracy	A	B	C
Variation in temperature indication, expressed in kelvins	±1,0	±2,0	±4,0

**6.3.2** The test shall be carried out within the range of fluid temperatures recommended by the valve manufacturer for the intended application of the valve.

### 6.4 Steady-state conditions

**6.4.1** All readings shall only be recorded after steady-state conditions have been reached.

**6.4.2** When steady-state conditions are reached for a specific test condition, only one set of readings of individual quantities shall be taken over concurrent common time periods. Each reading shall be recorded as the mean value of each quantity being measured.

## 6.5 Procedure

**6.5.1** Install the test valve in the test circuit using the upstream and downstream ports in the valve or in the tapping plate as required.

**6.5.2** Set the valve control for the flow path (or flow rate) required, if applicable.

**6.5.3** The number of sets of readings to be taken and their distribution over the range shall be selected to give a representative indication of the performance of the valve over the full range of flow selected for the test.

**6.5.4** For each flow selected in [6.5.3](#), measure the upstream pressure and the downstream pressure. If the test valve is a subplate-mounted type, skip [6.5.5](#) and [6.5.6](#).

**6.5.5** If the test valve is a line-mounted type, remove it from the test circuit and connect the lines as specified in [6.5.1](#) to complete the test circuit without the test valve. This step is not necessary when a test circuit in accordance with [5.2.2](#) is used.

**6.5.6** Repeat the pressure measurements of [6.5.4](#).

## 6.6 Pressure differential calculation

**6.6.1** Where appropriate, correct each pressure reading for pressure head effects in accordance with ISO 9110-2.

**6.6.2** Calculate the measured pressure differential for each reading in [6.5.4](#) by subtracting the downstream pressure from the upstream pressure. If the test valve is a subplate-mounted type, skip [6.6.3](#) and [6.6.4](#).

**6.6.3** If the test valve is a line-mounted type, calculate the tare pressure differential for each reading in [6.5.6](#) by subtracting the downstream pressure from the upstream pressure. Use a value of zero when a test circuit in accordance with [5.2.2](#) is used.

**6.6.4** If the test valve is a line-mounted type, calculate the pressure differential,  $\Delta p$ , for each reading by subtracting the tare pressure differential obtained in [6.6.3](#) from the measured pressure differential obtained in [6.6.2](#).

## 6.7 Presentation of the test results

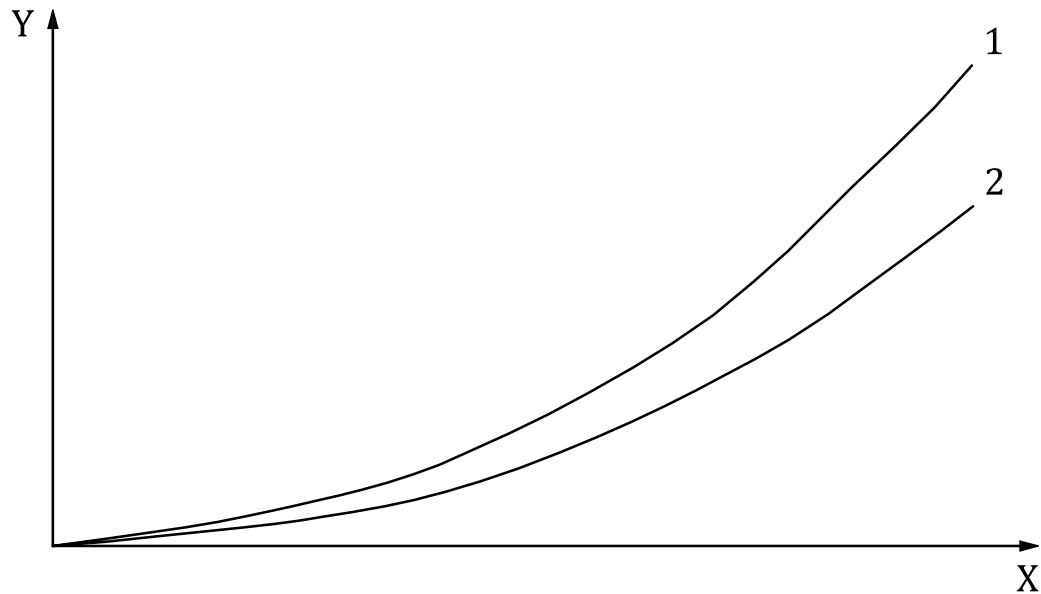
### 6.7.1 General

All test measurements and the results of calculations therefrom shall be tabulated by the testing agency and preferably also presented graphically as described in [6.7.2](#).

### 6.7.2 Presentation

The test results shall be presented dimensionally as a graph of pressure differential,  $\Delta p$ , against the flow rate,  $q$ . See [Annex A](#) for practical units. The kinematic viscosity and mass density at the controlled fluid temperature shall also be stated. An example is shown in [Figure 3](#).

For pilot check-valve cartridges, pilot relief valves or multifunctional valves with external drains, it is important to ensure that the characteristics are system independent and generally valid.



Valve manufacturer:  
Valve type:  
Valve model:  
Test fluid:  
Fluid kinematic viscosity:  
Fluid mass density:  
Fluid temperature:  
Measurement class:  
Valve state:

**Key**

- X flow rate,  $q$
- Y differential pressure,  $\Delta p$
- 1 flow path from B working port to T port
- 2 flow path from P port to A working port

**Figure 3 — Example of the presentation of test results**

## **7 Identification statement (Reference to this document)**

It is strongly recommended to manufacturers who have chosen to conform to this document that the following statement be used in test reports, catalogues and sales literature:

“Test for the determination of pressure differential/flow characteristics of hydraulic valves conforms to ISO 4411:2019, *Hydraulic fluid power — Valves — Determination of differential pressure/flow rate characteristics.*”

## Annex A (informative)

### Use of practical units

The results of tests in either tabular or graphical form may be presented using practical units as given in [Table A.1](#).

**Table A.1 — Practical units**

Quantity	Symbol	Practical unit
Nominal diameter of valve	$D$	mm
Flow rate	$q$	l/min
Pressure differential	$\Delta p$	kPa (bar)
Tube length	$l$	m
Inside diameter of tube	$d$	mm
Temperature	$\theta$	°C
Kinematic viscosity	$\nu$	mm <sup>2</sup> /s (cSt)
Mass density	$\rho$	kg/m <sup>3</sup>

## Annex B (informative)

### Pre-test checklist

The following list constitutes a checklist for the selection of appropriate items upon which agreement is recommended between the parties concerned prior to testing.

- a) valve manufacturer's name;
- b) manufacturer's identification (type number, serial number);
- c) manufacturer's description of valve;
- d) valve port sizes;
- e) test circuit (see [5.2.1](#));
- f) inside diameter of tube;
- g) pressure-tapping positions (see [5.3](#));
- h) cleanliness level of test fluid (see [6.2.2](#));
- i) test fluid (by name and description) (see [6.2.1](#));
- j) test fluid kinematic viscosity at test temperature (see [6.2.1](#) and [6.2.4](#));
- k) test fluid mass density at test temperature (see [6.2.1](#) and [6.2.4](#));
- l) test fluid temperature during test (see [6.3](#));
- m) range of flow for test (see [6.5.3](#));
- n) presentation of test results (see [6.7](#) and [Annex A](#));
- o) class of measurement accuracy (see [6.1](#)).

## Bibliography

- [1] ISO 1219-1, *Fluid power systems and components — Graphical symbols and circuit diagrams — Part 1: Graphical symbols for conventional use and data-processing applications*

(Continued from second cover)

<i>International Standard</i>	<i>Corresponding Indian Standard</i>	<i>Degree of Equivalence</i>
ISO 5781 Hydraulic fluid power — Pressure-reducing valves, sequence valves, unloading valves, throttle valves and check valves — Mounting surfaces	IS 14148 : 2021 Hydraulic fluid power — Pressure-reducing valves, sequences valves, unloading valves, throttle valves and check valves — Mounting surfaces	Identical with ISO 5781 : 2016
ISO 6264 Hydraulic fluid power — Pressure-relief valves — Mounting surfaces	IS 14150 : 2005 Hydraulic fluid power — Pressure relief valves — Mounting surfaces	Identical with ISO 6264 : 1998
ISO 9110-1 Hydraulic fluid power — Measurement techniques — Part 1: General measurement principles*	IS 15181 (Part 1) : 2002 Hydraulic fluid power — Measurement techniques: Part 1 General measurement principles	Identical with ISO 9110-1 : 1990
ISO 9110-2 Hydraulic fluid power — Measurement techniques — Part 2: Measurement of average steady-state pressure in a closed conduit*	IS 15181 (Part 2) : 2002 Hydraulic fluid power — Measurement techniques: Part 2 Measurement of average steady-state pressure in a closed conduit	Identical with ISO 9110-2 : 1990

\*Since revised in 2020.

The technical committee has reviewed the provisions of the following International Standards referred in this adopted standard and has decided that they are acceptable for use in conjunction with this standard:

<i>International Standard</i>	<i>Title</i>
ISO 6263	Hydraulic fluid power — Compensated flow-control valves — Mounting surfaces
ISO 10372	Hydraulic fluid power — Four and five-port servovalves — Mounting surfaces

For the purpose of deciding whether a particular requirement of this standard is complied with, the final value, observed or calculated expressing the result of a test or analysis, shall be rounded off in accordance with IS 2 : 2022 'Rules for rounding off numerical values (*second revision*)'.

## Bureau of Indian Standards

BIS is a statutory institution established under the *Bureau of Indian Standards Act, 2016* to promote harmonious development of the activities of standardization, marking and quality certification of goods and attending to connected matters in the country.

### Copyright

BIS has the copyright of all its publications. No part of these publications may be reproduced in any form without the prior permission in writing of BIS. This does not preclude the free use, in the course of implementing the standard, of necessary details, such as symbols and sizes, type or grade designations. Enquiries relating to copyright be addressed to the Head (Publication & Sales), BIS.

### Review of Indian Standards

Amendments are issued to standards as the need arises on the basis of comments. Standards are also reviewed periodically; a standard along with amendments is reaffirmed when such review indicates that no changes are needed; if the review indicates that changes are needed, it is taken up for revision. Users of Indian Standards should ascertain that they are in possession of the latest amendments or edition by referring to the website-[www.bis.gov.in](http://www.bis.gov.in) or [www.standardsbis.in](http://www.standardsbis.in).

This Indian Standard has been developed from Doc No.: PGD 36 (17516).

### Amendments Issued Since Publication

Amend No.	Date of Issue	Text Affected

## BUREAU OF INDIAN STANDARDS

### Headquarters:

Manak Bhavan, 9 Bahadur Shah Zafar Marg, New Delhi 110002

Telephones: 2323 0131, 2323 3375, 2323 9402

Website: [www.bis.gov.in](http://www.bis.gov.in)

### Regional Offices:

	Telephones
Central : 601/A, Konnectus Tower -1, 6 <sup>th</sup> Floor, DMRC Building, Bhavbhuti Marg, New Delhi 110002	{ 2323 7617
Eastern : 8 <sup>th</sup> Floor, Plot No 7/7 & 7/8, CP Block, Sector V, Salt Lake, Kolkata, West Bengal 700091	{ 2367 0012 2320 9474
Northern : Plot No. 4-A, Sector 27-B, Madhya Marg, Chandigarh 160019	{ 265 9930
Southern : C.I.T. Campus, IV Cross Road, Taramani, Chennai 600113	{ 2254 1442 2254 1216
Western : Plot No. E-9, Road No.-8, MIDC, Andheri (East), Mumbai 400093	{ 2821 8093

**Branches :** AHMEDABAD. BENGALURU. BHOPAL. BHUBANESHWAR. CHANDIGARH. CHENNAI. COIMBATORE. DEHRADUN. DELHI. FARIDABAD. GHAZIABAD. GUWAHATI. HIMACHAL PRADESH. HUBLI. HYDERABAD. JAIPUR. JAMMU & KASHMIR. JAMSHEDPUR. KOCHI. KOLKATA. LUCKNOW. MADURAI. MUMBAI. NAGPUR. NOIDA. PANIPAT. PATNA. PUNE. RAIPUR. RAJKOT. SURAT. VISAKHAPATNAM.