

ज्यामितीय उत्पाद विशिष्टि (जी.पी.एस.) —  
आयाम मापक उपकरण  
भाग 1 कैलिपर्स की डिजाइन और मेट्रोलॉजिकल  
विशेषताएँ  
( पहला पुनरीक्षण )

Geometrical Product Specifications  
(GPS) — Dimensional Measuring  
Equipment  
Part 1 Design and Metrological  
Characteristics of Callipers  
( First Revision )

ICS 17.040.30

© BIS 2024

© ISO 2019



भारतीय मानक ब्यूरो  
BUREAU OF INDIAN STANDARDS  
मानक भवन, 9 बहादुर शाह ज़फर मार्ग, नई दिल्ली - 110002  
MANAK BHAVAN, 9 BAHADUR SHAH ZAFAR MARG  
NEW DELHI - 110002  
[www.bis.gov.in](http://www.bis.gov.in) [www.standardsbis.in](http://www.standardsbis.in)

July 2024

Price Group 9

## NATIONAL FOREWORD

This Indian Standard (Part 1) (First Revision), which is identical to ISO 13385-1 : 2019 'Geometrical product specifications (GPS) — Dimensional measuring equipment — Part 1: Design and metrological characteristics of callipers' issued by the International Organization for Standardization (ISO) was adopted by the Bureau of Indian Standards on recommendation of the Engineering Metrology Sectional Committee and approval of the Production and General Engineering Division Council.'

This standard was first published in 2016 as an identical adoption of ISO 13385-1 : 2011.

This revision has been undertaken to align it with ISO 13385-1 : 2019.

The major changes have been incorporated in this revision are as follows:

- a) Figures have been updated to show more modern technology;
- b) General design characteristics have been removed and reference to IS 18164 : 2023/ISO 14978 : 2018 included;
- c) Metrological characteristics have been clarified and modified;
- d) Requirements for test methods have been included; and
- e) Default values for maximum permissible errors have been added.

This standard has been issued in two parts. The other part of this series is:

Part 2 Design and metrological characteristics of calliper depth gauges

The text of ISO standard has been approved as suitable for publication as an Indian Standard without deviations. Certain conventions are, however, not identical to those used in Indian Standards. Attention is particularly drawn to the following:

- a) Wherever the words 'International Standard' appear referring to this standard, they should be read as 'Indian Standard'; and
- b) Comma (,) has been used as a decimal marker while in Indian Standards, the current practice is to use a point (.) as the decimal marker.

In this adopted standard, references appear to the following International Standards for which Indian Standards also exist. The corresponding Indian Standards, which are to be substituted in their respective places, are listed below along with their degree of equivalence for the editions indicated:

<i>International Standard</i>	<i>Corresponding Indian Standard</i>	<i>Degree of Equivalence</i>
ISO 14253-1 Geometrical product specifications (GPS) — Inspection by measurement of workpieces and measuring equipment — Part 1: Decision rules for verifying conformity or nonconformity with specifications	IS 15371 (Part 1) : 2023/ISO 14253-1 : 2017 Geometrical product specifications (GPS) — Inspection by measurement of workpieces and measuring equipment: Part 1 Decision rules for verifying conformity or nonconformity with specifications (first revision)	Identical

[\*\(Continued on third cover\)\*](#)

# Contents

Page

<b>Introduction</b> .....	<b>iv</b>
<b>1 Scope</b> .....	<b>1</b>
<b>2 Normative references</b> .....	<b>1</b>
<b>3 Terms and definitions</b> .....	<b>1</b>
<b>4 Design characteristics</b> .....	<b>2</b>
4.1 General design and nomenclature.....	2
4.2 Dimensions.....	2
<b>5 Metrological characteristics</b> .....	<b>5</b>
5.1 General.....	5
5.2 Rated operating conditions.....	5
5.3 Reference point.....	5
5.4 Test methods.....	5
5.5 Partial surface contact error, $E$ (limited by $E_{MPE}$ ).....	5
5.6 Shift error, $S$ (limited by $S_{MPE}$ ).....	7
5.6.1 General.....	7
5.6.2 Shift error — Internal measuring faces.....	7
5.6.3 Shift error — Crossed knife-edge internal measuring faces.....	7
5.6.4 Shift error — Depth or step measuring faces.....	8
5.7 MPE values.....	9
5.8 Special cases.....	9
<b>6 Determination of conformity to specifications</b> .....	<b>9</b>
6.1 General.....	9
6.2 Measurement uncertainty.....	9
6.3 Decision rule.....	10
<b>7 Marking</b> .....	<b>10</b>
<b>Annex A (informative) Calibration guidelines for metrological characteristics</b> .....	<b>11</b>
<b>Annex B (normative) Default MPE values for metrological characteristics</b> .....	<b>12</b>
<b>Annex C (informative) Relation to the GPS matrix model</b> .....	<b>13</b>
<b>Bibliography</b> .....	<b>14</b>

## **Introduction**

This document is a geometrical product specification (GPS) standard and is to be regarded as a general GPS standard (see ISO 14638). It influences the chain links F and G of the chain of standards on size and distance in the general GPS matrix (see [Annex C](#)).

The ISO/GPS matrix model given in ISO 14638 gives an overview of the ISO/GPS system of which this document is a part. The fundamental rules of ISO/GPS given in ISO 8015 apply to this document and the default decision rules given in ISO 14253-1 apply to specifications made in accordance with this document, unless otherwise indicated; see ISO/TR 14253-6 for additional information on the selection of alternative decision rules.

For more detailed information on the relation of this document to other standards and the GPS matrix model, see [Annex C](#).

*Indian Standard*

GEOMETRICAL PRODUCT SPECIFICATIONS (GPS) —  
DIMENSIONAL MEASURING EQUIPMENT

**PART 1 DESIGN AND METROLOGICAL CHARACTERISTICS OF  
CALLIPERS**

( *First Revision* )

## **1 Scope**

This document provides the most important design and metrological characteristics of callipers

- with analogue indication: vernier scale or circular scale (dial), and
- with digital indication: digital display.

## **2 Normative references**

The following documents are referred to in the text in such a way that some or all of their content constitutes requirements of this document. For dated references, only the edition cited applies. For undated references, the latest edition of the referenced document (including any amendments) applies.

ISO 14253-1, *Geometrical product specifications (GPS) — Inspection by measurement of workpieces and measuring equipment — Part 1: Decision rules for verifying conformity or nonconformity with specifications*

ISO 14253-5, *Geometrical product specifications (GPS) — Inspection by measurement of workpieces and measuring equipment — Part 5: Uncertainty in verification testing of indicating measuring instruments*

ISO/TR 14253-6, *Geometrical product specifications (GPS) — Inspection by measurement of workpieces and measuring equipment — Part 6: Generalized decision rules for the acceptance and rejection of instruments and workpieces*

ISO 14978:2018, *Geometrical product specifications (GPS) — General concepts and requirements for GPS measuring equipment*

ISO/IEC Guide 98-3, *Uncertainty of measurement — Part 3: Guide to the expression of uncertainty in measurement (GUM:1995)*

ISO/IEC Guide 99, *International vocabulary of metrology — Basic and general concepts and associated terms (VIM)*

## **3 Terms and definitions**

For the purposes of this document, the terms and definitions given in ISO 14978 and ISO/IEC Guide 99 and the following apply.

ISO and IEC maintain terminological databases for use in standardization at the following addresses:

- ISO Online browsing platform: available at <https://www.iso.org/obp>
- IEC Electropedia: available at <http://www.electropedia.org/>

### 3.1 calliper

measuring instrument which evaluates a dimensional quantity of an internal or external feature on the basis of opposing contact from the movement of a slider with a measuring jaw, moving relative to a measuring scale on a rigid beam and to a fixed jaw

Note 1 to entry: See examples in [Figures 1, 2](#) and [3](#).

Note 2 to entry: Callipers can be equipped for additional measurements, such as depth and step measurements (see [Figures 1](#) and [2](#)).

Note 3 to entry: The indication can be either analogue (vernier scale or circular scale) or digital.

### 3.2 measuring face contact

contact between the measuring face and an integral feature of a workpiece

#### 3.2.1 full measuring face contact

contact between the full area of the measuring face and an integral feature of a workpiece

#### 3.2.2 partial measuring face contact

contact between a partial area of the measuring face and an integral feature of a workpiece

#### 3.2.3 measuring face line contact

contact between a line, nominally perpendicular to the length of the jaws, on the measuring face and an integral feature of a workpiece

## 4 Design characteristics

### 4.1 General design and nomenclature

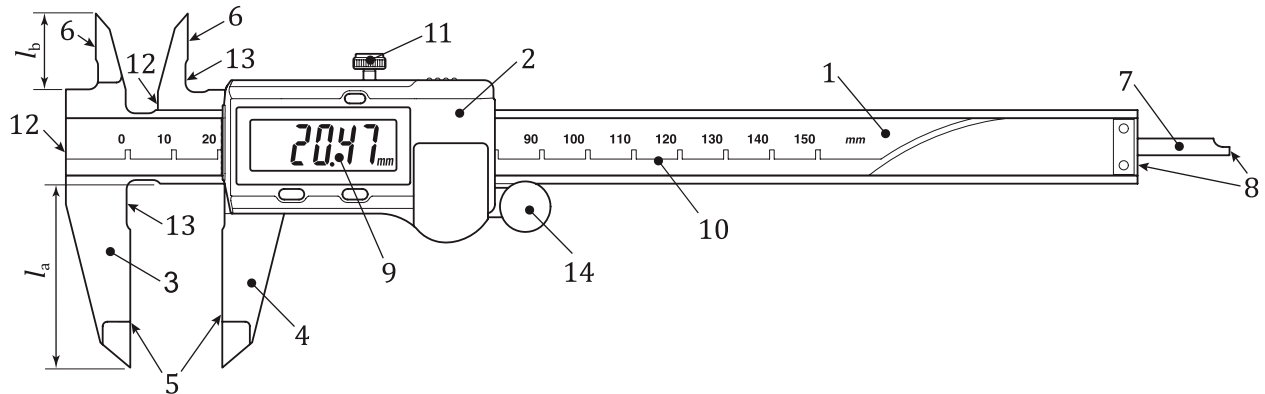
The design shall follow the general guidelines in ISO 14978, including the common design characteristics in ISO 14978:2018, Annex C. Examples of the general design of callipers are shown in [Figures 1, 2](#) and [3](#).

The scale interval of the main scale on the beam of a calliper with a vernier scale shall be 1 mm. In the case of callipers with circular scales, the scale interval on the beam shall be either 1 mm or 2 mm.

### 4.2 Dimensions

The manufacturer shall state important calliper design dimensions, such as those shown in [Table 1](#). The values shown in [Table 1](#) are typical dimensions of the elements of callipers and are not requirements of this document. [Table 1](#) does not include the length of the undercut, which is typically kept as small as practicable.

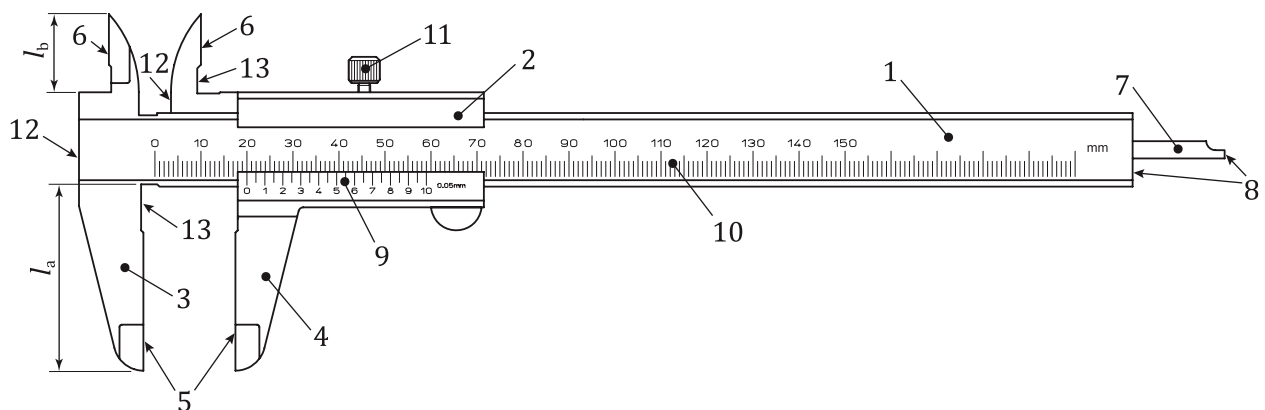
For callipers equipped with a depth measuring rod, the manufacturer shall state the cross-sectional dimensions of the rod, for example  $\varnothing$  1,5 mm for round section or 1,2 mm  $\times$  3 mm for rectangular section.



**Key**

- |  |   |
|--|---|
| 1 beam   | 9 digital display                             |
| 2 slider   | 10 main scale                                 |
| 3 fixed (measuring) jaw  | 11 locking screw                              |
| 4 sliding (measuring) jaw  | 12 measuring faces for step measurement       |
| 5 measuring faces for external measurements                            | 13 undercut                                   |
| 6 measuring faces for internal measurements (crossed knife-edge faces) | 14 thumb roller                               |
| 7 depth measuring rod  | $l_a$ length of jaw for external measurements |
| 8 measuring faces for depth measurement                                | $l_b$ length of jaw for internal measurements |

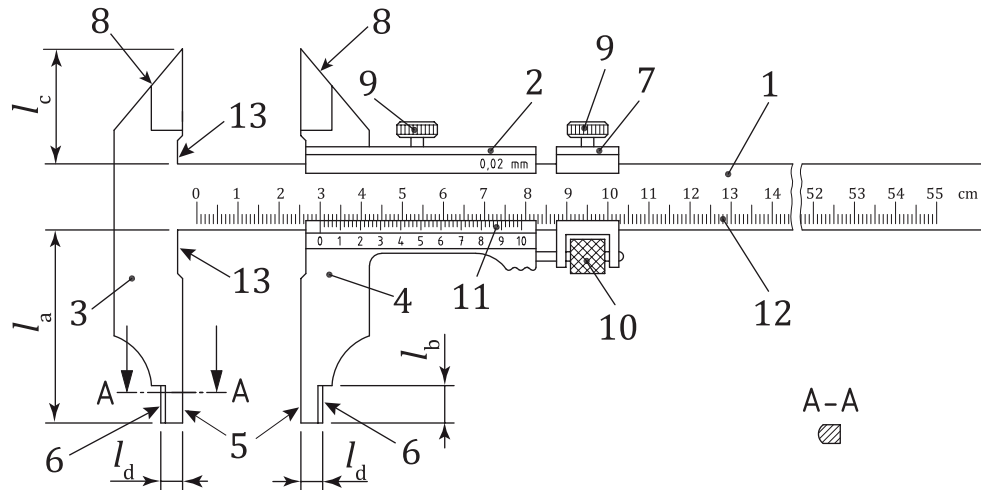
**Figure 1 — Example design of callipers with digital display for external, internal, depth and step measurement**



**Key**

- |  |   |
|--|---|
| 1 beam   | 8 measuring faces for depth measurement       |
| 2 slider   | 9 vernier scale                               |
| 3 fixed (measuring) jaw  | 10 main scale                                 |
| 4 sliding (measuring) jaw  | 11 locking screw                              |
| 5 measuring faces for external measurements                            | 12 measuring faces for step measurement       |
| 6 measuring faces for internal measurements (crossed knife-edge faces) | 13 undercut                                   |
| 7 depth measuring rod  | $l_a$ length of jaw for external measurements |
|  | $l_b$ length of jaw for internal measurements |

**Figure 2 — Example design of vernier callipers for external, internal, depth and step measurement**



**Key**

- |   |  |
|---|--|
| 1 beam                                      | 10 fine adjustment device                                |
| 2 slider                                    | 11 vernier scale   |
| 3 fixed (measuring) jaw                     | 12 main scale  |
| 4 sliding (measuring) jaw                   | 13 undercut  |
| 5 measuring faces for external measurements | $l_a$ length of jaw for external measurements            |
| 6 measuring faces for internal measurements | $l_b$ length of jaw for internal measurements            |
| 7 fine adjustment clamp                     | $l_c$ length of knife-edge jaw for external measurements |
| 8 knife edges for external measurements     | $l_d$ width of measuring faces                           |
| 9 locking screw                             |  |

**Figure 3 — Example design of vernier callipers for external and internal measurements and with a fine adjustment device**

**Table 1 — Typical dimensions of callipers**

Dimensions in millimetres

Measuring range less than or equal to	Lengths $l_a$ , $l_b$ and $l_c$ of the jaws					Width $l_d$ of the faces for internal measurement
	Calliper according to Figure 1 or 2		Calliper according to Figure 3			
	$l_a$	$l_b$	$l_a$	$l_b$	$l_c$	
150	40	8 to 20	50	8 to 10	25 to 35	5
200	40 to 50	8 to 25	60 to 80	8 to 10	25 to 35	5
300	60 to 65	10 to 30	70 to 100	10 to 12	35 to 45	5
500	70 to 95	15 to 40	100 to 150	15 to 20	50 to 60	5 or 10
750	70 to 95	15 to 40	100 to 150	15 to 20	50 to 60	5 or 10
1 000	100 to 130	20 to 60	125 to 150	20 to 30	50 to 60	10 to 20
1 500	100 to 130	20 to 60	150 to 200	20 to 30	50 to 60	10 to 20
2 000	100 to 130	20 to 60	150 to 200	20 to 30	50 to 60	10 to 20

NOTE The measuring range refers to external measurements for the callipers in Figures 1, 2 and 3.



## 5 Metrological characteristics

### 5.1 General

The metrological characteristics and associated maximum permissible error (MPE) values apply to any indications permitted for use of the calliper as defined by the manufacturer and when used in accordance with the manufacturer's recommendations. The MPE values cannot be smaller than the digital step or the scale interval on the circular scale or vernier scale.

### 5.2 Rated operating conditions

The manufacturer shall state any rated operating conditions that apply to the MPE values. All MPE values apply at a rated operating condition for a temperature of 20 °C exactly, unless otherwise stated. Test values shall therefore be corrected to 20 °C to obtain the error of indication that the calliper would have produced had the test been performed at 20 °C. If temperature correction to 20 °C is not performed, this document allows the consequences to be included in the evaluation of the measurement uncertainty (see [6.2](#)).

A calliper is a manually operated measuring instrument, and the user of the calliper is therefore necessarily included in the measuring system that is specified in accordance with this document. The user shall be reasonably skilled in the operation of the calliper.

### 5.3 Reference point

Callipers with a digital display or a circular scale shall have an adjustable zero point. Callipers with a digital display shall be able to be set to zero in any position within the measuring range; callipers with a circular scale shall be able to be set to zero within the range of the circular scale.

For callipers with an adjustable zero point, the metrological characteristics described in this document apply when the measuring faces for external measurements are properly brought into contact for zero setting, and therefore the reference point is considered fixed at this point when evaluating the metrological characteristics.

For callipers without an adjustable zero point, there can be an error when the external measuring faces are brought into contact with each other. This error shall be included in the evaluation of the metrological characteristics without applying any correction for it.

### 5.4 Test methods

The errors of indication shall be tested with suitable instruments or measurement standards with an appropriate measurement uncertainty, for example with gauge blocks according to ISO 3650, step gauges or setting ring gauges. When testing conformity to specification, sufficient testing shall be used to establish confidence in the results.

For acceptance testing, the customer is free to choose the test points; however, unless otherwise specified, the acceptance testing shall conform to the requirements in this document.

When considering test points, appropriate consideration shall be given to the calliper design and operating conditions that might indicate the presence of short-length cyclic or local errors. For callipers with circular scales or vernier scales, the chosen test points shall cover the range of the circular or vernier scale. For example, for callipers with circular scales, test points shall be chosen that orient the pointer at various angles within the circular scale.

### 5.5 Partial surface contact error, $E$ (limited by $E_{MPE}$ )

The partial surface contact error is the error of indication when partial measuring face contact is employed to measure a measurement standard using the external measuring faces. This error

is calculated as the signed difference between the calliper indication and the reference value of the measurement standard.

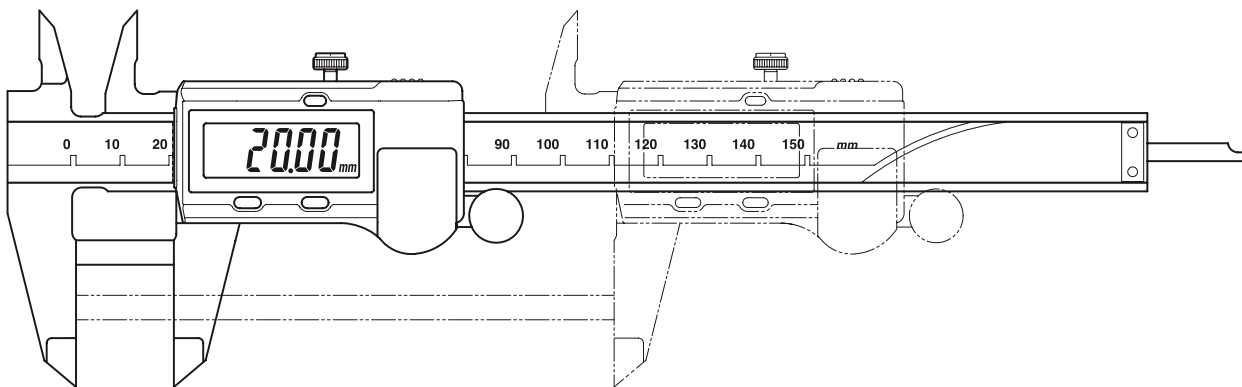
The partial surface contact error shall be tested by measuring measurement standards at multiple test points located across the measuring range of the calliper (see [Figure 4](#)) and located on the external measuring faces at different distances away from the beam (see [Figure 5](#)).

The test points shall be distributed as evenly as practicable across the measuring range of the calliper with the minimum number of test points according to [Table 2](#). At least one test point shall be at 90 % or greater of the measuring range. The reference point does not count towards satisfying the minimum test points in [Table 2](#). Two test points, one near the beam and one near the tip of the jaws, shall be taken for both the longest and shortest measurement standards in the test for partial surface contact error (see [Figure 5](#)).

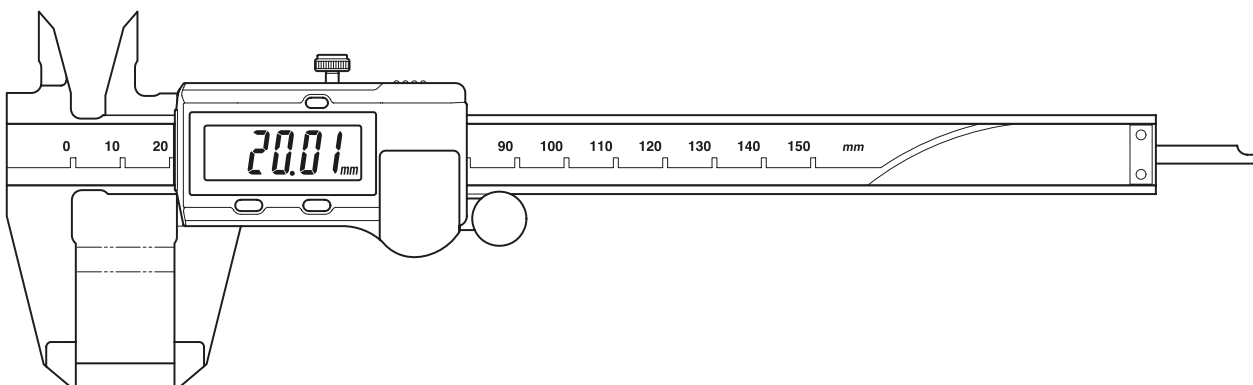
The averaging of multiple indications is not permitted when calculating the partial surface contact error. As such, the influence of repeatability is included in the test for partial surface contact error.

NOTE 1 The partial surface contact error is intended to detect a combination of calliper errors, including scale errors, the effect of the applied measuring force, the play between the beam and the slider, the deflection of the beam, and the influence of the parallelism and flatness of the external measuring faces.

NOTE 2 The partial surface contact error is influenced by the line contact error as discussed in [Annex A](#).



**Figure 4 — Example of test arrangement for partial surface contact error showing two different test points located across the measuring range**



**Figure 5 — Example of test arrangement for partial surface contact error showing the shortest measurement standard being measured both near the beam and near the tip of the jaws**

**Table 2 — Number of test points for partial surface contact error**

Measuring range less than or equal to mm	Minimum number of test points
150	5
300	6
1 000	7
Over 1 000	8

## 5.6 Shift error, $S$ (limited by $S_{MPE}$ )

### 5.6.1 General

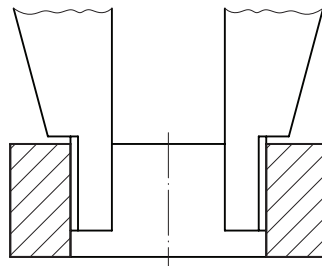
The shift error is the error of indication when full or partial measuring face contact is employed for any measuring faces other than the external measuring faces. After zero setting with the external measuring faces as in 5.3, this error is calculated as the signed difference between the calliper indication and the reference value of a measurement standard when using any of the other measuring faces.

The applicability of the shift error depends on the design of the calliper. Typical shift errors include the use of internal measuring faces, depth measuring rod, and the step measuring faces.

Each of the types of measurement that the calliper is designed to perform shall be separately tested with at least one test point. For each, the shift error shall be tested by measuring an appropriate measurement standard.

### 5.6.2 Shift error — Internal measuring faces

For internal measuring faces, a setting ring gauge or other internal reference standard shall be used for testing (see Figure 6). The size of the measurement standard used to test for shift error when using the internal measuring faces shall be larger than 20 mm, with the default size being between 20 mm and 50 mm, unless a larger size is necessary due to the design of the calliper, for example due to the width of the faces for internal measurement as shown in Figure 3.

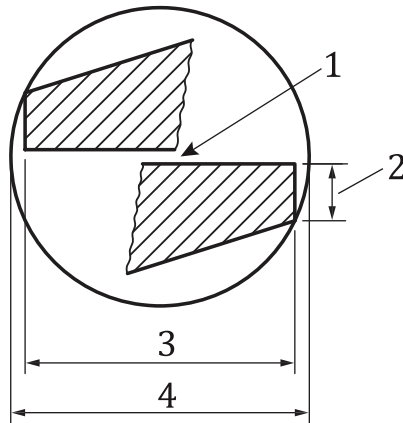


**Figure 6 — Example of test arrangement for shift error — Internal measurement**

### 5.6.3 Shift error — Crossed knife-edge internal measuring faces

For callipers which use crossed knife-edge internal measuring faces, an additional shift error can occur when measuring a small cylindrical internal diameter. The effect depends on the gap between the measuring faces and the thickness of the knife-edge faces (see Figure 7). Unless otherwise stated, this metrological characteristic applies to callipers with a measuring range less than or equal to 300 mm.

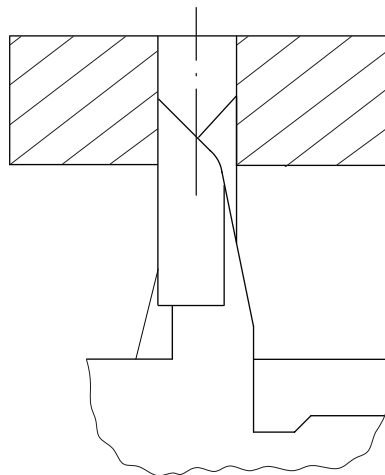
The shift error due to crossed knife-edge internal measuring faces shall be tested by measuring a small internal cylindrical measurement standard, for example a setting ring gauge, with a nominal size of 5 mm in diameter (see Figure 8).



**Key**

- 1 gap between the measuring faces
- 2 thickness of the knife-edge faces
- 3 indicated size
- 4 overall size

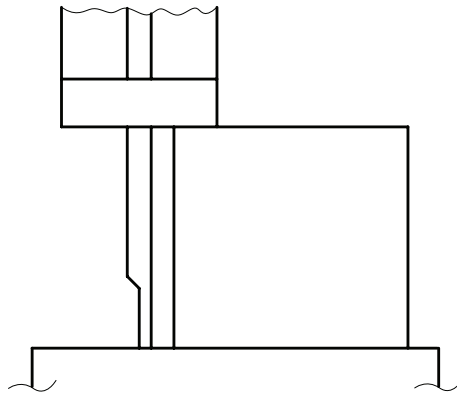
**Figure 7 — Error due to crossed knife-edge internal measuring faces in small holes**



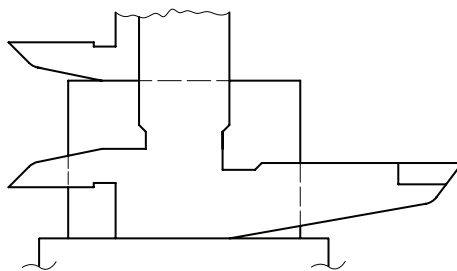
**Figure 8 — Example of test arrangement for shift error — Internal measurement of 5 mm diameter using the crossed knife-edge internal measuring faces**

**5.6.4 Shift error — Depth or step measuring faces**

For depth or step measuring faces, a gauge block and surface plate or other step height measurement standard shall be used for testing. By default, the size of the measurement standard used to test for shift error when using the depth or step measuring faces shall be less than 50 mm. See [Figures 9](#) and [10](#).



**Figure 9 — Example of test arrangement for shift error — Depth measurement**



**Figure 10 — Example of test arrangement for shift error — Step measurement**

## 5.7 MPE values

For acceptance tests, MPE values shall be stated by the manufacturer in accordance with this document. [Table 3](#) provides an example of a specification sheet with blanks to enter the MPE values. For reverification tests, the MPE values shall be stated by the user. This document is intended to be used by the manufacturer or user to state the MPE values. [Annex B](#) shall be used for situations when no MPE values are stated.

## 5.8 Special cases

For callipers equipped with more than one scale, for example two vernier scales, the MPE values apply to the use of the multiple scales. Testing shall be done across the measuring range of the calliper using each scale.

For callipers equipped with multiple external jaws, for example the calliper shown in [Figure 3](#), the MPE values apply to all pairs of measuring faces for external measurement. One pair of the external jaws shall be tested for partial surface contact error,  $E$ , and the others for shift error,  $S$ .

# 6 Determination of conformity to specifications

## 6.1 General

All errors of indication shall conform with the specified MPE values.

## 6.2 Measurement uncertainty

Evaluation of measurement uncertainty shall be performed in accordance with ISO/IEC Guide 98-3. When determining conformity with specification, the measurement uncertainty associated with a

test value (the test value uncertainty) shall be evaluated in accordance with ISO 14253-5. Additional guidance is available in ISO 14978:2018, Annex D.

Uncertainty associated with the reference standards used in testing, as well as any uncertainty associated with temperature, shall generally be included as contributors to the measurement uncertainty. The test value uncertainty shall generally not include contributions from the errors of the calliper, such as the calliper repeatability or resolution.

As in 5.2, the user of the calliper shall be skilled in the operation of the calliper to properly determine conformity with specifications. As discussed in ISO 14253-5, when the user is sufficiently skilled, any variation in the test values associated with the skills of the user of the calliper is generally not included as a contributor to the measurement uncertainty.

### 6.3 Decision rule

When demonstrating conformity or non-conformity to specifications, the decision rule accompanying the specifications shall be followed. If no decision rule is stated with the specifications, and no special agreement is made between supplier and customer, then the default rule of ISO 14253-1 applies.

NOTE Information on the selection of an alternative decision rule can be found in ISO/TR 14253-6.

**Table 3 — Example specification sheet for metrological characteristics**

Measured length, <i>l</i> mm	Maximum permissible error of indication	
	$E_{MPE}$ µm	$S_{MPE}$ µm
$0 \leq l \leq 50$		
$50 < l \leq 100$		
$100 < l \leq 200$		
$200 < l \leq 300$		
$300 < l \leq 400$		
$400 < l \leq 500$		
$500 < l \leq 600$		
$600 < l \leq 700$		
$700 < l \leq 800$		
$800 < l \leq 900$		
$900 < l \leq 1\ 000$		
Analogue scale interval or digital step: _____ mm		

### 7 Marking

Callipers shall be marked with durable serialised identification using unique alphanumeric identification to identify the individual measuring equipment.

NOTE For the calliper shown in Figure 3, the value of the width,  $l_d$ , can be indicated on the jaw for internal measurements.

## Annex A (informative)

### Calibration guidelines for metrological characteristics

#### A.1 General

The calibration of a calliper should generally include the evaluation of the performance of the calliper within its measuring range.

In general, the calibration should include verification testing of all metrological characteristics across the measuring range in accordance with this document. Based on the intended use of the calliper, a task-related calibration should be taken into consideration.

**EXAMPLE** For a calliper that is intended to only be used for external diameter measurements, the testing of any metrological characteristics associated with shift error (see 5.6) can be considered unnecessary.

#### A.2 Line contact error

Line contact error is the error of indication when measuring face line contact is employed using a single measurement standard, for example a cylindrical measuring pin, at any position along the external measuring faces. Line contact error detects the effects of the parallelism of the external measuring faces as well as any flatness error or localized wear. The parallelism of the external measuring faces also influences the partial surface contact error,  $E$ . Line contact error is therefore important for used callipers for the detection of worn measuring faces but often not necessary for new callipers. It is usually not necessary to test the line contact error at more than one position within the measuring range.

Prior to testing for line contact error, it is recommended that the light gap between the external measuring faces when brought into close contact with each other is observed. Gaps of light can be useful in identifying potential problems associated with localized wear or parallelism of the measuring faces.

The line contact error is tested by measuring a small cylindrical measurement standard, for example a 15 mm diameter cylindrical measuring pin, at different positions along the entire external measuring faces, perpendicular to the plane of jaws (see Figure A.1). The line contact error is calculated as the range of the measured values. The MPE value for line contact error is equal to the range of  $E_{MPE}$ , i.e. if  $E_{MPE} = \pm a$  then the MPE for line contact error is  $2a$ .

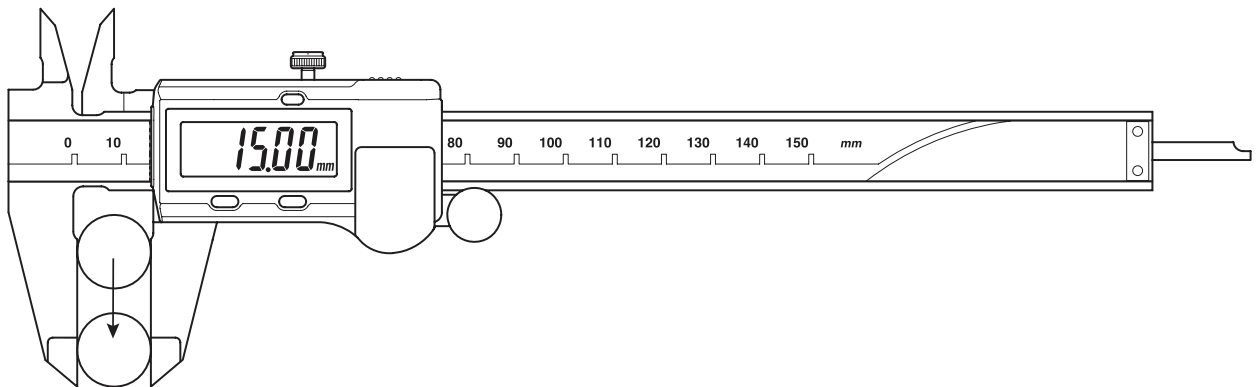


Figure A.1 — Example of test arrangement for line contact error

## Annex B (normative)

### Default MPE values for metrological characteristics

If no MPE values are otherwise stated then the values in [Table B.1](#) apply for callipers with a measuring range up to 1 000 mm and with analogue scale interval or digital step of 0,01 mm, 0,02 mm or 0,05 mm.

For the MPE values in [Table B.1](#), the decision rule that applies when demonstrating conformity or non-conformity to specification shall be simple acceptance and rejection, with the measurement capability index,  $C_m$ , being four or larger, in accordance with ISO/TR 14253-6. The measurement uncertainty of the test values shall be evaluated in accordance with ISO 14253-5 (see [6.2](#)).

NOTE The MPE values in [Table B.1](#) include a simple acceptance and rejection decision rule in accordance with ISO/TR 14253-6. This is an example of stating a decision rule other than the default rule of ISO 14253-1 (see [6.3](#)).

**Table B.1 — MPE values for callipers with measuring range up to 1 000 mm**

Measured length, $l$ mm	Analogue scale interval or digital step					
	0,01 mm		0,02 mm		0,05 mm	
	$E_{MPE}$ $\mu\text{m}$	$S_{MPE}$ $\mu\text{m}$	$E_{MPE}$ $\mu\text{m}$	$S_{MPE}$ $\mu\text{m}$	$E_{MPE}$ $\mu\text{m}$	$S_{MPE}$ $\mu\text{m}$
$0 \leq l \leq 50$	$\pm 20$	$\pm 30$	$\pm 20$	$\pm 40$	$\pm 50$	$\pm 50$
$50 < l \leq 100$	$\pm 30$	$\pm 50$	$\pm 40$	$\pm 60$	$\pm 50$	$\pm 100$
$100 < l \leq 200$	$\pm 30$	$\pm 50$	$\pm 40$	$\pm 60$	$\pm 100$	$\pm 100$
$200 < l \leq 300$	$\pm 40$	$\pm 60$	$\pm 40$	$\pm 60$	$\pm 100$	$\pm 100$
$300 < l \leq 400$	$\pm 40$	$\pm 60$	$\pm 40$	$\pm 60$	$\pm 100$	$\pm 100$
$400 < l \leq 500$	$\pm 50$	$\pm 70$	$\pm 60$	$\pm 80$	$\pm 100$	$\pm 100$
$500 < l \leq 600$	$\pm 50$	$\pm 70$	$\pm 60$	$\pm 80$	$\pm 150$	$\pm 150$
$600 < l \leq 700$	$\pm 60$	$\pm 80$	$\pm 60$	$\pm 80$	$\pm 150$	$\pm 150$
$700 < l \leq 800$	$\pm 60$	$\pm 80$	$\pm 60$	$\pm 80$	$\pm 150$	$\pm 150$
$800 < l \leq 1\ 000$	$\pm 70$	$\pm 90$	$\pm 80$	$\pm 100$	$\pm 150$	$\pm 150$



## Annex C (informative)

### Relation to the GPS matrix model

#### C.1 General

For full details about the GPS matrix model see ISO 14638.

The ISO/GPS matrix model given in ISO 14638 gives an overview of the ISO/GPS system of which this document is a part. The fundamental rules of ISO/GPS given in ISO 8015 apply to this document and the default decision rules given in ISO 14253-1 apply to specifications made in accordance with this document, unless otherwise indicated; see ISO/TR 14253-6 for additional information on the selection of alternative decision rules.

#### C.2 Information about this document and its use

This document provides the most important design and metrological characteristics of callipers with vernier scale, circular scale (dial), and digital indication.

#### C.3 Position in the GPS matrix model

This document is a general GPS standard that influences the chain links for measuring equipment and calibration on size and distance in the general GPS matrix, as graphically illustrated in [Table C.1](#).

**Table C.1 — Position in the GPS matrix model**

	Chain links						
	A	B	C	D	E	F	G
	Symbols and indications	Feature requirements	Feature properties	Conformance and non-conformance	Measurement	Measuring equipment	Calibration
Size						•	•
Distance						•	•
Form							
Orientation							
Location							
Run-out							
Profile surface texture							
Areal surface texture							
Surface imperfections							

#### C.4 Related International Standards

The related International Standards are those of the chains of standards indicated in [Table C.1](#).

## Bibliography

- [1] ISO 1, *Geometrical product specifications (GPS) — Standard reference temperature for the specification of geometrical and dimensional properties*
- [2] ISO 3650, *Geometrical Product Specifications (GPS) — Length standards — Gauge blocks*
- [3] ISO 8015, *Geometrical product specifications (GPS) — Fundamentals — Concepts, principles and rules*
- [4] ISO 14253-2, *Geometrical product specifications (GPS) — Inspection by measurement of workpieces and measuring equipment — Part 2: Guidance for the estimation of uncertainty in GPS measurement, in calibration of measuring equipment and in product verification*
- [5] ISO 14638, *Geometrical product specifications (GPS) — Matrix model*
- [6] ISO/TR 16015, *Geometrical product specifications (GPS) — Systematic errors and contributions to measurement uncertainty of length measurement due to thermal influences*
- [7] ISO/IEC 17025, *General requirements for the competence of testing and calibration laboratories*

**NATIONAL ANNEX D**

*(National Foreword)*

**MPE VALUES FOR CALLIPERS WITH MEASURING RANGE  $1\ 000 < L \leq 2\ 000$  MM**

**D-1 MAXIMUM PERMISSIBLE ERROR**

The preferred MPE values for measuring range  $1\ 000 < L \leq 2\ 000$  are given below:

**MPE values for Callipers with Measuring Range  $1\ 000 < L \leq 2\ 000$  mm**

Measured length L mm	Analogue Scale Interval or Digital Step					
	0.01 mm		0.02 mm		0.05 mm	
	EMPE $\mu\text{m}$	SMPE $\mu\text{m}$	EMPE $\mu\text{m}$	SMPE $\mu\text{m}$	EMPE $\mu\text{m}$	SMPE $\mu\text{m}$
$1\ 000 < l \leq 2\ 000$	$\pm 120$	$\pm 140$	$\pm 120$	$\pm 140$	$\pm 200$	$\pm 200$

**NATIONAL ANNEX E**

*(National Foreword)*

**E-1 BIS Certification Marking**

The product(s) conforming to the requirements of this standard may be certified as per the conformity assessment schemes under the provisions of the *Bureau of Indian Standards Act, 2016* and the Rules and Regulations framed thereunder, and the product(s) may be marked with the Standard Mark.



([Continued from second cover](#))

<i>International Standard</i>	<i>Corresponding Indian Standard</i>	<i>Degree of Equivalence</i>
ISO 14253-5 Geometrical product specifications (GPS) — Inspection by measurement of workpieces and measuring equipment — Part 5: Uncertainty in verification testing of indicating measuring instruments	IS 15371 (Part 5) : 2023/ISO 14253-5 : 2015 Geometrical product specifications (GPS) — Inspection by measurement of workpieces and measuring equipment: Part 5 Uncertainty in verification testing of indicating measuring instruments	Identical
ISO/TR 14253-6 Geometrical product specifications (GPS) — Inspection by measurement of workpieces and measuring equipment — Part 6: Generalized decision rules for the acceptance and rejection of instruments and workpieces	IS 15371 (Part 6) : 2018/ISO/TR 14253-6 : 2012 Geometrical product specifications (GPS) — Inspection by measurement of workpieces and measuring equipment: Part 6 Generalized decision rules for the acceptance and rejection of instruments and workpieces	Identical
ISO 14978 : 2018 Geometrical product specifications (GPS) — General concepts and requirement for GPS measuring equipment	IS 18164 : 2023/ISO 14978 : 2018 Geometrical product specifications (GPS) — General concepts and requirements for GPS measuring equipment	Identical
ISO/IEC Guide 99 International vocabulary of metrology — Basic and general concepts and associated terms (VIM)	IS/ISO/IEC Guide 99 : 2007 International vocabulary of metrology — Basic and general concepts and associated terms (VIM)	Identical

The Committee has reviewed the provisions of the following International Standard referred in this adopted standard and has decided that it is acceptable for use in conjunction with this standard.

<i>International Standard</i>	<i>Title</i>
ISO/IEC Guide 98-3	Uncertainty of measurement — Part 3: Guide to the expression of uncertainty in measurement (GUM : 1995)

This standard also gives reference to [National Annex D](#). This National Annex is informative and for voluntary compliance, which may be as per the agreement between manufacturer and purchaser.

The standard also makes a reference to the BIS Certification Marking of the product, details of which are given in [National Annex E](#).

For the purpose of deciding whether a particular requirement of this standard is complied with, the final value, observed or calculated expressing the result of a test or analysis, shall be rounded off in accordance with IS 2 : 2022 'Rules for rounding off numerical values (*second revision*)'. The number of significant places retained in the rounded off value should be the same as that of the specified value in this standard.

## Bureau of Indian Standards

BIS is a statutory institution established under the *Bureau of Indian Standards Act, 2016* to promote harmonious development of the activities of standardization, marking and quality certification of goods and attending to connected matters in the country.

### Copyright

BIS has the copyright of all its publications. No part of these publications may be reproduced in any form without the prior permission in writing of BIS. This does not preclude the free use, in the course of implementing the standard, of necessary details, such as symbols and sizes, type or grade designations. Enquiries relating to copyright be addressed to the Head (Publication & Sales), BIS.

### Review of Indian Standards

Amendments are issued to standards as the need arises on the basis of comments. Standards are also reviewed periodically; a standard along with amendments is reaffirmed when such review indicates that no changes are needed; if the review indicates that changes are needed, it is taken up for revision. Users of Indian Standards should ascertain that they are in possession of the latest amendments or edition by referring to the website-[www.bis.gov.in](http://www.bis.gov.in) or [www.standardsbis.in](http://www.standardsbis.in).

This Indian Standard has been developed from Doc No.: PGD 25 (18439).

### Amendments Issued Since Publication

Amend No.	Date of Issue	Text Affected

## BUREAU OF INDIAN STANDARDS

### Headquarters:

Manak Bhavan, 9 Bahadur Shah Zafar Marg, New Delhi 110002

Telephones: 2323 0131, 2323 3375, 2323 9402

Website: [www.bis.gov.in](http://www.bis.gov.in)

### Regional Offices:

Central : 601/A, Konnectus Tower -1, 6<sup>th</sup> Floor,  
DMRC Building, Bhavbhuti Marg, New  
Delhi 110002

Telephones

{ 2323 7617

Eastern : 8<sup>th</sup> Floor, Plot No 7/7 & 7/8, CP Block, Sector V,  
Salt Lake, Kolkata, West Bengal 700091

{ 2367 0012  
2320 9474

Northern : Plot No. 4-A, Sector 27-B, Madhya Marg,  
Chandigarh 160019

{ 265 9930

Southern : C.I.T. Campus, IV Cross Road, Taramani, Chennai 600113

{ 2254 1442  
2254 1216

Western : Manakalya, 5<sup>th</sup> Floor/MTNL CETTM, Technology Street, Hiranandani Gardens, Powai  
Mumbai 400076

{ 25700030  
25702715

**Branches :** AHMEDABAD, BENGALURU, BHOPAL, BHUBANESHWAR, CHANDIGARH, CHENNAI, COIMBATORE, DEHRADUN, DELHI, FARIDABAD, GHAZIABAD, GUWAHATI, HARYANA (CHANDIGARH), HUBLI, HYDERABAD, JAIPUR, JAMMU, JAMSHEDPUR, KOCHI, KOLKATA, LUCKNOW, MADURAI, MUMBAI, NAGPUR, NOIDA, PARWANOO, PATNA, PUNE, RAIPUR, RAJKOT, SURAT, VIJAYAWADA.