

व्यक्तिगत पहचान के लिए कार्ड और  
सुरक्षा उपकरण  
संपर्क रहित प्रॉक्सिमिटी ऑब्जेक्ट्स  
भाग 1 भौतिक विशेषताएं

**Cards and Security Devices for  
Personal Identification  
Contactless Proximity Objects  
Part 1 Physical Characteristics**

ICS 35.240.15

© BIS 2022



भारतीय मानक ब्यूरो  
BUREAU OF INDIAN STANDARDS  
मानक भवन, 9 बहादुर शाह ज़फर मार्ग, नई दिल्ली - 110002  
MANAK BHAVAN, 9 BAHADUR SHAH ZAFAR MARG  
NEW DELHI - 110002  
[www.bis.gov.in](http://www.bis.gov.in) [www.standardsbis.in](http://www.standardsbis.in)

## NATIONAL FOREWORD

This Indian Standard (Part 1) which is identical with ISO/IEC 14443-1 : 2018 ‘Cards and security devices for personal identification Contactless proximity objects Part 1: Physical characteristics’ issued by the International Organization for Standardization (ISO) and International Electrotechnical Commission (IEC) was adopted by the Bureau of Indian Standards on the recommendation of the Identification & Data Capture Techniques, Cards and Security Devices Sectional Committee and approval of the Electronics and Information Technology Division Council.

Other parts in this series are:-

Part 2 Radio frequency power and signal interface

Part 3 Initialization and anticollision

Part 4 Transmission protocol

The text of ISO/IEC Standard has been approved as suitable for publication as an Indian Standard without deviations. Certain conventions are, however, not identical to those used in Indian Standards. Attention is particularly drawn to the following:

- a) Wherever the words ‘International Standard’ appears referring to this standard, they should be read as ‘Indian Standard’.
- b) Comma (,) has been used as a decimal marker while in Indian Standards, the current practice is to use a point (.) as the decimal marker.

In this adopted standard, reference appears to certain International Standards for which the Indian Standards also exist. The corresponding Indian Standard which is to be substituted in its respective place is listed below along with its degree of equivalence for the edition indicated:

<i>International Standard</i>	<i>Corresponding Indian Standard</i>	<i>Degree of Equivalence</i>
ISO/IEC 7810 Identification cards physical characteristics	IS 14172 : 2022 Identification cards Physical characteristics ( <i>second revision</i> )	Identical
ISO/IEC 14443-2 : 2016 Identification cards contactless integrated circuit cards proximity cards — Part 2: Radio frequency power and signal interface	IS/ISO/IEC 14443-2 : 2020 Identification cards — Contactless integrated circuit cards — Proximity cards: Part 2 Radio frequency power and signal interface	Identical

The technical committee has reviewed the provisions of the following International Standard. Referred in this adopted standard and has decided that it is acceptable for use in conjunction with this standard:

<i>International Standard</i>	<i>Title</i>
ISO/IEC 15457-1	Identification cards — Thin flexible cards — Part 1: Physical characteristics

For the purpose of deciding whether a particular requirement of this standard is complied with, the final value, observed or calculated, expressing the result of a test or analysis, shall be rounded off in accordance with IS 2 : 2022 ‘Rules for rounding off numerical values (*second revision*)’. The number of significant places retained in the rounded off value should be the same as that of the specified value in this standard.

# Contents

Page

<b>Introduction</b> .....	<b>iv</b>
<b>1 Scope</b> .....	<b>1</b>
<b>2 Normative references</b> .....	<b>1</b>
<b>3 Terms and definitions</b> .....	<b>1</b>
<b>4 Physical characteristics</b> .....	<b>2</b>
4.1 General.....	2
4.2 Antenna.....	2
4.3 Additional requirements for PICC classes.....	2
4.4 Alternating magnetic field.....	2
<b>Annex A (normative) PICC class definitions</b> .....	<b>3</b>
<b>Bibliography</b> .....	<b>11</b>

## Introduction

Contactless card standards encompass a variety of types as embodied in the ISO/IEC 10536 series of standards (close-coupled cards), the ISO/IEC 14443 series of standards (Contactless proximity objects) and the ISO/IEC 15693 series of standards (Contactless vicinity objects). These device types are intended, respectively, for operation when very near, nearby and at a longer distance from associated coupling devices.

The ISO/IEC 14443 series of standards defines the technology-specific requirements for identification cards conforming to ISO/IEC 7810 and thin flexible cards conforming to ISO/IEC 15457-1 and the use of such cards to facilitate international interchange. However, it also recognizes that the technology offers the possibility that proximity objects may be provided in forms other than that of the International Standard card formats. Furthermore, it does not preclude the incorporation of other standard technologies on the card, such as those referenced in the Bibliography.

The ISO/IEC 14443 series of standards accommodates the operation of proximity cards in the presence of other contactless cards conforming to the ISO/IEC 10536 series of standards and the ISO/IEC 15693 series of standards.

*Indian Standard*

# CARDS AND SECURITY DEVICES FOR PERSONAL IDENTIFICATION CONTACTLESS PROXIMITY OBJECTS

## PART 1 PHYSICAL CHARACTERISTICS

### 1 Scope

This document defines the physical characteristics of proximity cards (PICCs).

It is intended to be used in conjunction with other parts of ISO/IEC 14443.

### 2 Normative references

The following documents are referred to in the text in such a way that some or all of their content constitutes requirements of this document. For dated references, only the edition cited applies. For undated references, the latest edition of the referenced document (including any amendments) applies.

ISO/IEC 7810, *Identification cards — Physical characteristics*

ISO/IEC 14443-2:2016, *Identification cards — Contactless integrated circuit cards — Proximity cards — Part 2: Radio frequency power and signal interface*

ISO/IEC 15457-1, *Identification cards — Thin flexible cards — Part 1: Physical characteristics*

### 3 Terms and definitions

For the purposes of this document, the terms and definitions given in ISO/IEC 7810, ISO/IEC 15457-1 and the following apply.

ISO and IEC maintain terminological databases for use in standardization at the following addresses:

- IEC Electropedia: available at <http://www.electropedia.org/>
- ISO Online browsing platform: available at <http://www.iso.org/obp>

#### 3.1

#### **integrated circuit**

#### **IC**

electronic component designed to perform processing and/or memory functions

#### 3.2

#### **contactless**

achievement of signal exchange with, and supply of power to, the card without the use of galvanic elements

Note 1 to entry: It is also the absence of an ohmic path from the external interfacing equipment to the integrated circuit(s) contained within the card.

#### 3.3

#### **contactless integrated circuit card**

card into which *integrated circuit* (3.1) and coupling means have been placed, such that communication to such integrated circuit is done in a *contactless* (3.2) manner

**3.4  
operate as intended**

operates in the manner described by the manufacturer's specification in accordance with ISO/IEC 14443

**3.5  
PICC**

*contactless integrated circuit card* (3.3) or other object with which communication and power transfer are done by inductive coupling in proximity of a coupling device

Note 1 to entry: Commonly called a proximity card.

**3.6  
PICC antenna zone**

for each class a zone defined by an external geometrical shape and when defined an internal geometrical shape

**3.7  
PICC class**

combination of antenna dimension and loading effect

Note 1 to entry: See [Annex A](#).

## **4 Physical characteristics**

### **4.1 General**

The PICC may be in the form of a card compliant with ISO/IEC 7810 or ISO/IEC 15457-1, or an object of any other dimension.

### **4.2 Antenna**

If the PICC dimensions are not compliant with ISO/IEC 7810 or ISO/IEC 15457-1, the dimensions of the PICC antenna shall not exceed 86 mm × 54 mm × 3 mm.

NOTE This antenna size restriction stems from the fact that the radio frequency power and signal interface defined in ISO/IEC 14443-2 and its test methods in ISO/IEC 10373-6 are based on ID-1 cards.

### **4.3 Additional requirements for PICC classes**

It has been established that the use of a prescribed PICC class within an industry sector may enhance interoperability within that sector. The use of a PICC class is optional. If used, PICCs shall comply with the requirements given in [Annex A](#).

### **4.4 Alternating magnetic field**

If the PICC meets the requirements of one particular class as specified in [Annex A](#), then the PICC, whichever form the PICC has according to 4.1, shall continue to operate as intended after continuous exposure to a magnetic field of an average level of 4/3 times  $H_{max}$  at 13,56 MHz as specified in ISO/IEC 14443-2:2016, 6.2 for this class. The averaging time is 30 s and the maximum level of the magnetic field is limited to 8/5 times  $H_{max}$ .

If the PICC does not claim to meet the requirements of one particular class as specified in [Annex A](#), then the PICC, whichever form the PICC has according to 4.1, shall continue to operate as intended after continuous exposure to a magnetic field of an average level of 10 A/m (rms) at 13,56 MHz. The averaging time is 30 s and the maximum level of the magnetic field is limited to 12 A/m (rms).

## Annex A (normative)

### PICC class definitions

#### A.1 “Class 1”

The support of “Class 1” PICCs is mandatory for PCDs.

The antenna of a “Class 1” PICC shall be located within a zone defined by two rectangles, as shown in [Figure A.1](#):

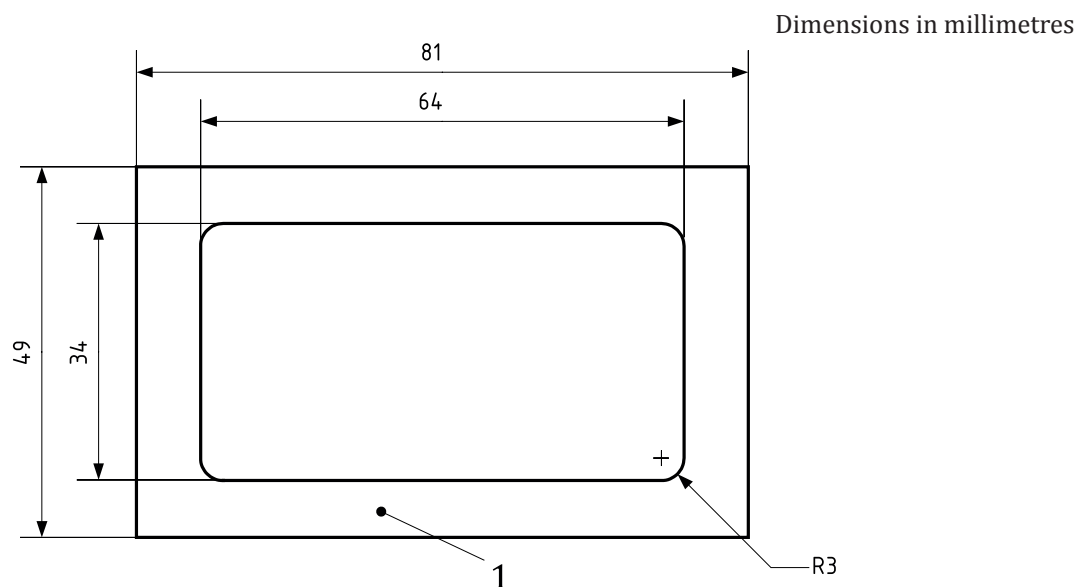
- 1) external rectangle: 81 mm × 49 mm;
- 2) internal rectangle: 64 mm × 34 mm, centered in the external rectangle, with 3 mm corner radii.

The antenna of a “Class 1” PICC shall encircle the internal rectangle of the PICC antenna zone.

The antenna of a “Class 1” PICC shall fit into a zone which shall not differ by more than 300 mm<sup>2</sup> from the “Class 1” PICC antenna zone, respecting:

- 1) the connections to the ends of the antenna coil may be outside of the defined zone, and
- 2) parts of the antenna coil may be inside the internal rectangle.

Unless the PICC manufacturer declares otherwise, the area of the full IC package as shown in [Figure A.7](#) shall be counted as part of the PICC antenna.



#### Key

- 1 PICC antenna zone

**Figure A.1 — Location of the antenna of the “Class 1” PICC**

The antenna of a PICC with ID-1 dimensions (as defined in ISO/IEC 7810 or ISO/IEC 15457-1) should be centered.

## A.2 “Class 2”

The support of “Class 2” PICCs is mandatory for PCDs.

The antenna of a “Class 2” PICC shall be located within a zone defined by two rectangles, as specified in [Figure A.2](#):

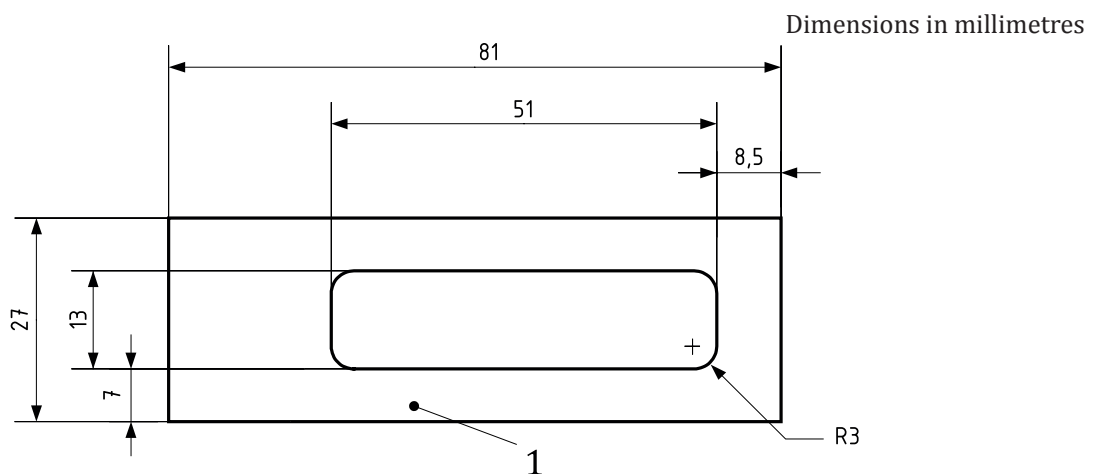
- 1) external rectangle: 81 mm × 27 mm;
- 2) internal rectangle: 51 mm × 13 mm, located at 7 mm and 8,5 mm from the external rectangle, with 3 mm corner radii.

The antenna of a “Class 2” PICC shall encircle the internal rectangle of the PICC antenna zone.

The antenna of a “Class 2” PICC shall fit into a zone which shall not differ by more than 150 mm<sup>2</sup> from the “Class 2” PICC antenna zone, respecting:

- 1) the connections to the ends of the antenna coil may be outside of the defined zone, and
- 2) parts of the antenna coil may be inside the internal rectangle.

Unless the PICC manufacturer declares otherwise, the area of the full IC package as shown in [Figure A.7](#) shall be counted as part of the PICC antenna.



### Key

- 1 PICC antenna zone

**Figure A.2 — Location of the antenna of the “Class 2” PICC**

## A.3 “Class 3”

The support of “Class 3” PICCs is mandatory for PCDs.

The antenna of a “Class 3” PICC shall be located within a zone defined by either two rectangles:

- 1) external rectangle: 50 mm × 40 mm;
  - 2) internal rectangle: 35 mm × 24 mm, centered in the external rectangle, with 3 mm corner radii;
- or two circles:

- 3) external circle with diameter 50 mm;
- 4) internal circle with diameter 32 mm, concentric with the external circle;



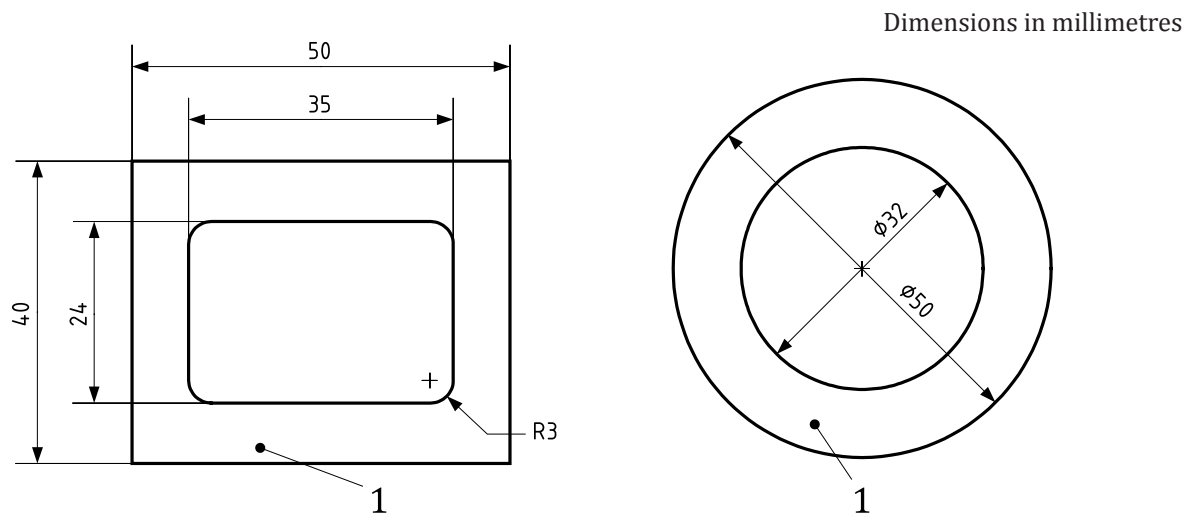
as specified in [Figure A.3](#).

The antenna of a “Class 3” PICC shall encircle the internal rectangle or circle of the PICC antenna zone.

The antenna of a “Class 3” PICC shall fit into a zone which shall not differ by more than 150 mm<sup>2</sup> from the “Class 3” PICC antenna zone, respecting:

- 1) the connections to the ends of the antenna coil may be outside of the defined zone, and
- 2) parts of the antenna coil may be inside the internal rectangle or circle.

Unless the PICC manufacturer declares otherwise, the area of the full IC package as shown in [Figure A.7](#) shall be counted as part of the PICC antenna.



#### Key

- 1 PICC antenna zone

**Figure A.3 — Location of the antenna of the “Class 3” PICC**

#### A.4 “Class 4”

The support of “Class 4” PICCs is optional for PCDs.

The antenna of a “Class 4” PICC shall be located within a zone defined by either two rectangles:

- 1) external rectangle: 50 mm × 27 mm;
  - 2) internal rectangle: 35 mm × 13 mm, centered in the external rectangle, with 3 mm corners radii;
- or two circles:

- 3) external circle with diameter 41 mm;
- 4) internal circle with diameter 24 mm, concentric with the external circle;

as specified in [Figure A.4](#).

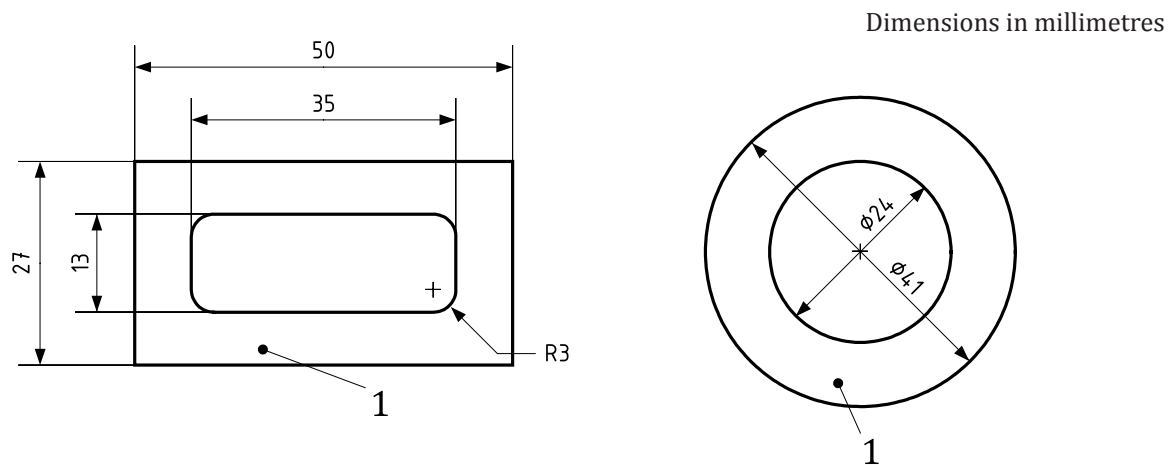
The antenna of a “Class 4” PICC shall encircle the internal rectangle or circle of the PICC antenna zone.

The antenna of a “Class 4” PICC shall fit into a zone which shall not differ by more than 100 mm<sup>2</sup> from the “Class 4” PICC antenna zone, respecting:

- 1) the connections to the ends of the antenna coil may be outside of the defined zone, and

2) parts of the antenna coil may be inside the internal rectangle or circle.

Unless the PICC manufacturer declares otherwise, the area of the full IC package as shown in [Figure A.7](#) shall be counted as part of the PICC antenna.



**Key**

1 PICC antenna zone

**Figure A.4 — Location of the antenna of the “Class 4” PICC**

**A.5 “Class 5”**

The support of “Class 5” PICCs is optional for PCDs.

The antenna of a “Class 5” PICC shall be located within a zone defined by either two rectangles:

- 1) external rectangle: 40,5 mm × 24,5 mm;
- 2) internal rectangle: 25 mm × 10 mm, centered in the external rectangle, with 3 mm corners radii;

or two circles:

- 3) external circle with diameter 35 mm;
- 4) internal circle with diameter 18 mm, concentric with the external circle;

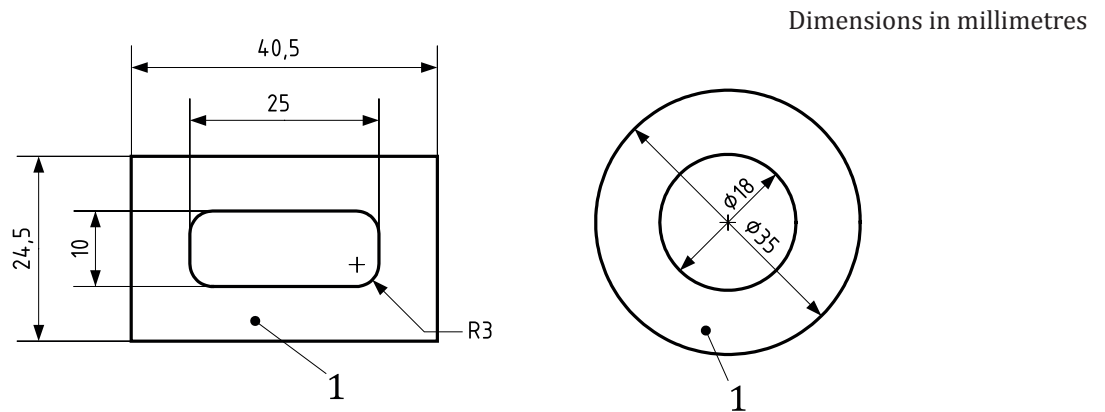
as specified in [Figure A.5](#).

The antenna of a “Class 5” PICC shall encircle the internal rectangle or circle of the PICC antenna zone.

The antenna of a “Class 5” PICC shall fit into a zone which shall not differ by more than 70 mm<sup>2</sup> from the “Class 5” PICC antenna zone, respecting:

- 1) the connections to the ends of the antenna coil may be outside of the defined zone, and
- 2) parts of the antenna coil may be inside the internal rectangle or circle.

Unless the PICC manufacturer declares otherwise, the area of the full IC package as shown in [Figure A.7](#) shall be counted as part of the PICC antenna.

**Key**

1 PICC antenna zone

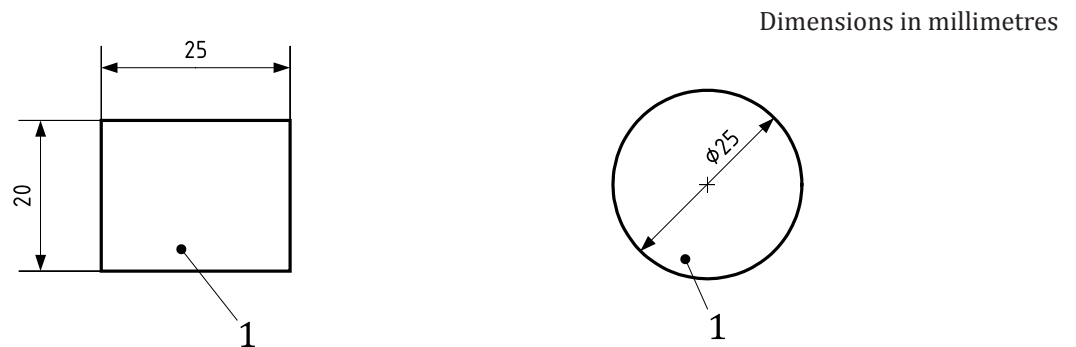
**Figure A.5 — Location of the antenna of the “Class 5” PICC****A.6 “Class 6”**

The support of “Class 6” PICCs is optional for PCDs.

The antenna of a “Class 6” PICC shall be located within a zone defined by either a rectangle of dimensions 25 mm × 20 mm or a circle of 25 mm diameter, as specified in [Figure A.6](#).

The connections to the ends of the antenna coil may be outside of the defined zone with a maximum area of 30 mm<sup>2</sup>.

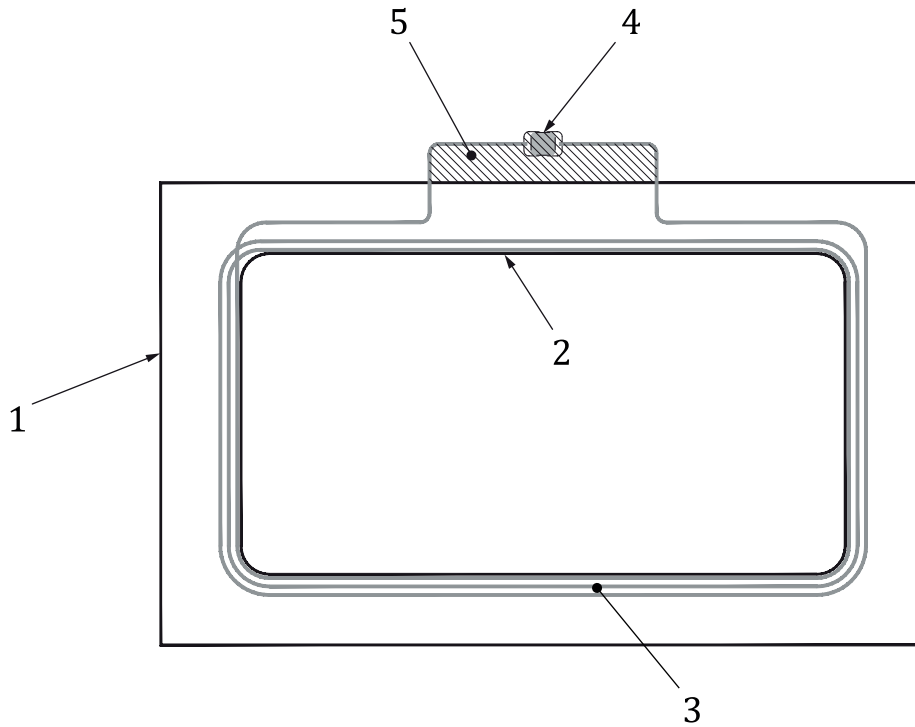
Unless the PICC manufacturer declares otherwise, the area of the full IC package as shown in [Figure A.7](#) shall be counted as part of the PICC antenna.

**Key**

1 PICC antenna zone

**Figure A.6 — Location of the antenna of the “Class 6” PICC****A.7 Examples of “Class 1” PICCs**

[Figure A.7](#), [Figure A.8](#) and [Figure A.9](#) show examples of “Class 1” PICCs having parts outside of the defined zone.

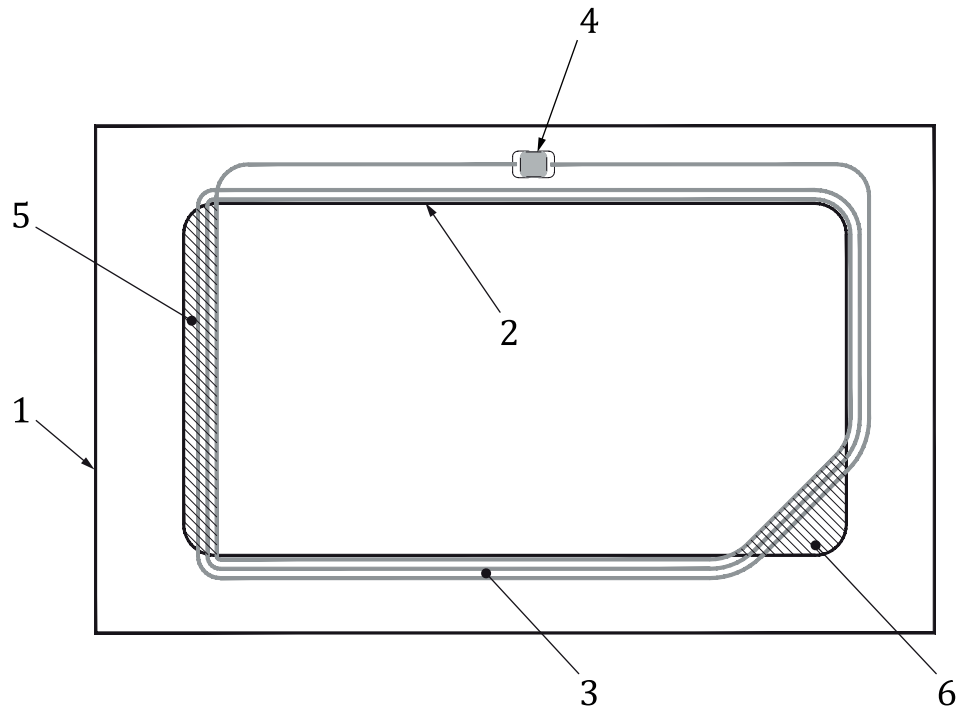


**Key**

- 1 external rectangle of the PICC antenna zone
- 2 internal rectangle of the PICC antenna zone
- 3 antenna
- 4 IC package
- 5 area A1

**Figure A.7 — Example 1 of “Class 1” PICC**

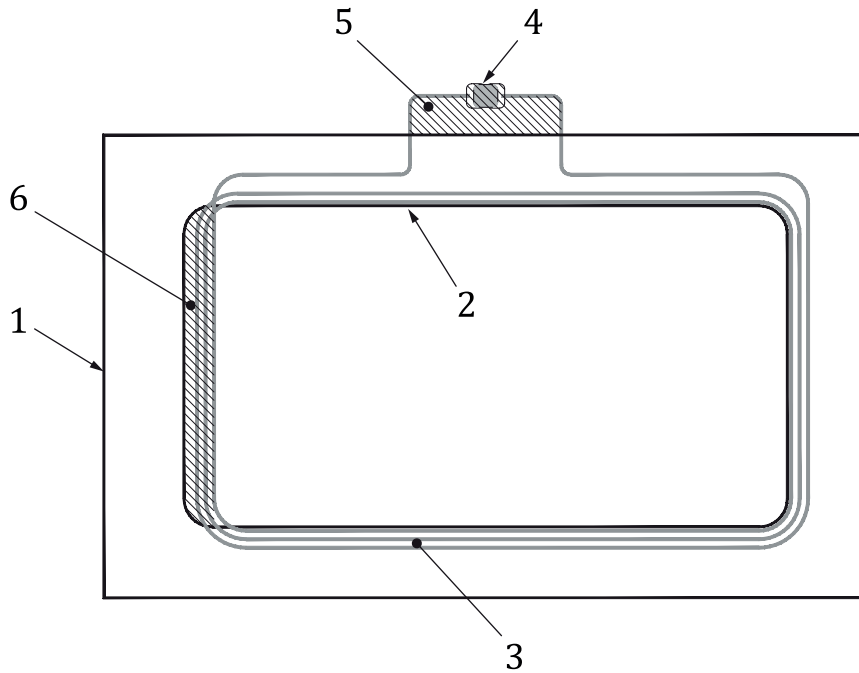
NOTE 1 In this example, the PICC antenna fits into a zone which includes area A1 (the connections to the ends of the antenna coil located outside of the defined zone) and which does not differ by more than 300 mm<sup>2</sup> from the PICC antenna zone.

**Key**

- 1 external rectangle of the PICC antenna zone
- 2 internal rectangle of the PICC antenna zone
- 3 antenna
- 4 IC package
- 5 area A2
- 6 area A3

**Figure A.8 — Example 2 of “Class 1” PICC**

NOTE 2 In this example, the PICC antenna fits into a zone which includes areas A2 (a part of the antenna coil located inside the internal rectangle) and A3 (another part of the antenna coil located inside the internal rectangle) and which does not differ by more than 300 mm<sup>2</sup> from the PICC antenna zone.



**Key**

- 1 external rectangle of the PICC antenna zone
- 2 internal rectangle of the PICC antenna zone
- 3 antenna
- 4 IC package
- 5 area A1
- 6 area A2

**Figure A.9 — Example 3 of “Class 1” PICC**

NOTE 3 In this example, the PICC antenna fits into a zone which includes areas A1 and A2 and which does not differ by more than 300 mm<sup>2</sup> from the PICC antenna zone.

## Bibliography

This document does not preclude the application to the PICC<sup>1)</sup> of other existing card technology International Standards, such as those listed as follows:

- [1] ISO/IEC 7811 (all parts), *Identification cards — Recording technique*
- [2] ISO/IEC 7812 (all parts), *Identification cards — Identification of issuers*
- [3] ISO/IEC 7813, *Information technology — Identification cards — Financial transaction cards*
- [4] ISO/IEC 7816 (all parts), *Identification cards — Integrated circuit cards*
- [5] ISO/IEC 10536 (all parts), *Identification cards — Contactless integrated circuit(s) cards — Close-coupled cards*
- [6] ISO/IEC 15457 (all parts), *Identification cards — Thin flexible cards*
- [7] ISO/IEC 15693 (all parts)<sup>2)</sup>, *Cards and security devices for personal identification — Contactless vicinity objects*
- [8] ISO/IEC 10373-6:2016, *Identification cards — Test methods — Part 6: Proximity cards*

---

1) Restrictions may apply to embossing of PICCs (see ISO/IEC 7811-1).

2) Title is of the version to be published currently at DIS stage.







## Bureau of Indian Standards

BIS is a statutory institution established under the *Bureau of Indian Standards Act, 2016* to promote harmonious development of the activities of standardization, marking and quality certification of goods and attending to connected matters in the country.

### Copyright

BIS has the copyright of all its publications. No part of these publications may be reproduced in any form without the prior permission in writing of BIS. This does not preclude the free use, in the course of implementing the standard, of necessary details, such as symbols and sizes, type or grade designations. Enquiries relating to copyright be addressed to the Head (Publication & Sales), BIS.

### Review of Indian Standards

Amendments are issued to standards as the need arises on the basis of comments. Standards are also reviewed periodically; a standard along with amendments is reaffirmed when such review indicates that no changes are needed; if the review indicates that changes are needed, it is taken up for revision. Users of Indian Standards should ascertain that they are in possession of the latest amendments or edition by referring to the website-[www.bis.gov.in](http://www.bis.gov.in) or [www.standardsbis.in](http://www.standardsbis.in).

This Indian Standard has been developed from Doc No.: LITD 16 (17411).

### Amendments Issued Since Publication

Amend No.	Date of Issue	Text Affected

## BUREAU OF INDIAN STANDARDS

### Headquarters:

Manak Bhavan, 9 Bahadur Shah Zafar Marg, New Delhi 110002

Telephones: 2323 0131, 2323 3375, 2323 9402

Website: [www.bis.gov.in](http://www.bis.gov.in)

### Regional Offices:

	Telephones
Central : 601/A, Konnectus Tower -1, 6 <sup>th</sup> Floor, DMRC Building, Bhavbhuti Marg, New Delhi 110002	{ 2323 7617
Eastern : 8 <sup>th</sup> Floor, Plot No 7/7 & 7/8, CP Block, Sector V, Salt Lake, Kolkata, West Bengal 700091	{ 2367 0012 2320 9474
Northern : Plot No. 4-A, Sector 27-B, Madhya Marg, Chandigarh 160019	{ 265 9930
Southern : C.I.T. Campus, IV Cross Road, Taramani, Chennai 600113	{ 2254 1442 2254 1216
Western : Plot No. E-9, Road No.-8, MIDC, Andheri (East), Mumbai 400093	{ 2821 8093

**Branches :** AHMEDABAD. BENGALURU. BHOPAL. BHUBANESHWAR. CHANDIGARH. CHENNAI. COIMBATORE. DEHRADUN. DELHI. FARIDABAD. GHAZIABAD. GUWAHATI. HIMACHAL PRADESH. HUBLI. HYDERABAD. JAIPUR. JAMMU & KASHMIR. JAMSHEDPUR. KOCHI. KOLKATA. LUCKNOW. MADURAI. MUMBAI. NAGPUR. NOIDA. PANIPAT. PATNA. PUNE. RAIPUR. RAJKOT. SURAT. VISAKHAPATNAM.