

for 100 mm borewell

TOLERANCES	details			No of Pads	width of the groove	Thickness of the stationary assembly D			Radius of rocking surface	Depth of the rocking curve	A	B	C	Thickness of the PAD B
	Outer diameter of the Pad D1	Inner Diameter of the PadD2				loose segment	Mitchell/ kingsbury	fixed disk						
"±0.5MM"	"±0.5MM"	"±0.5MM"	NIL	NIL	"±0.5MM"	"±0.5MM"	"±0.5MM"	"±0.5MM"	"±0.5MM"	"±0.5MM"	"±0.5MM"	"±0.5MM"	"±0.5MM"	"±0.5MM"
	70	25	6	4	16	30	22	15	3	70	11	82	5	

details	Outer Diameter	Inner Diameter	Thickness of the pad	Total Width	Width of the disk	F	C	E	H
Tolerances	"±0.5	"±0.5	"±0.5	"±0.5	"±0.5	"±0.5	"±0.5	"±0.5	"±0.5
	68	27	5	15	10	20	22	4	68



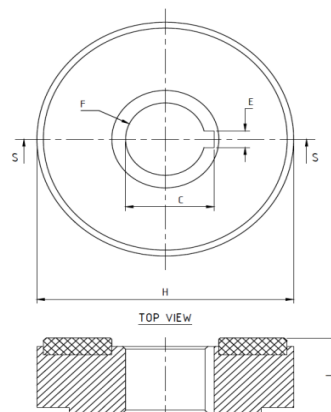
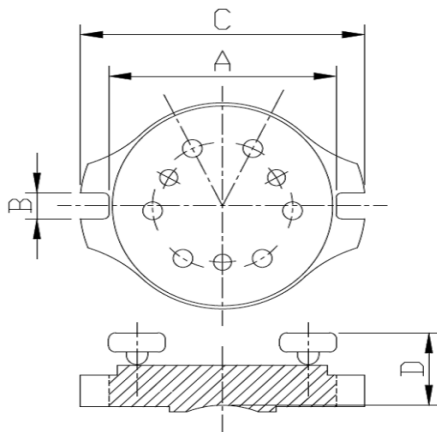
loose segment bearing



Mitchell /kingsbury bearing



fixed disk bearing



for 150 mm borewell

details	Outer diameter of the Pad D1	Inner Diameter of the PadD2	No of Pads	width of the groove	Thickness of the stationary assembly D			Radius of rocking surface	Depth of the rocking curve	A	B	C	Thickness of the PAD B
					loose segment	Mitchell/ kingsbury	fixed disk						
TOLERANC ES	" ± 0.5 MM"	" ± 0.5 MM"	NIL	NIL	" ± 0.5 MM"	" ± 0.5 MM"	" ± 0.5 MM"	" ± 0.5 MM"	" ± 0.5 MM"	" ± 0.5 MM"	" ± 0.5 MM"	" ± 0.5 MM"	" ± 0.5 MM"
upto 7.5kw	85	38	6	6	25	34	25	20	2	95	13	122	7
upto 15 kw	90												
above 15 kw	95												

details	Outer Diameter of the Pad	Inner Diameter of the Pad	Thickness of the pad	Total Width L	Width of the disk	F	C	E	H
Tolerance	" ± 0.5 "	" ± 0.5 "	" ± 0.5 "	" ± 0.5 "	" ± 0.5 "	" ± 0.5 "	" ± 0.5 "	" ± 0.5 "	" ± 0.5 "
upto 7.5kw	83	40	6	27	15	26	29	6	87
upto 15 kw	88								92
above 15 kw	93								97



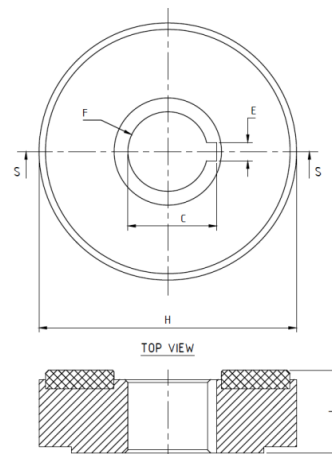
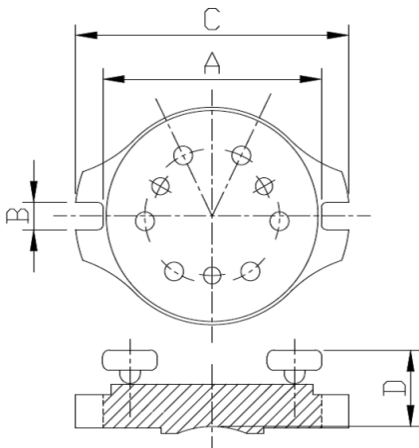
loose segment bearing



Mitchell /kingsbury bearing



fixed disk bearing



for 200 mm borewell

details	Outer diameter of the Pad D1	Inner Diameter of the PadD2	No of Pads	width of the groove	Thickness of the stationary assembly D			Radius of rocking surface	Depth of the rocking curve	A	B	C	Thickness of the PAD B
					loose segment	Mitchell/ kingsbury	fixed disk						
TOLERANCES	" ± 0.5 MM"	" ± 0.5 MM"	NIL	NIL	" ± 0.5 MM"	" ± 0.5 MM"	" ± 0.5 MM"	" ± 0.5 MM"	" ± 0.5 MM"	" ± 0.5 MM"	" ± 0.5 MM"	" ± 0.5 MM"	" ± 0.5 MM"
upto 50kw	110	50	8	8	35	50	35	20	3	130	16	160	9
above 50 kw	120												

details	Outer Diameter of the Pad	Inner Diameter of the Pad	Thickness of the pad	Total Width I	Width of the disk along with	F	C	E	H
Tolerance	" ± 0.5 "	" ± 0.5 "	" ± 0.5 "	" ± 0.5 "	" ± 0.5 "	" ± 0.5 "	" ± 0.5 "	" ± 0.5 "	" ± 0.5 "
upto 50kw	108	52	8	43	15	28	32	8	112
above 50 kw	118								122



loose segment bearing



Mitchell /kingsbury bearing



fixed disk bearing

