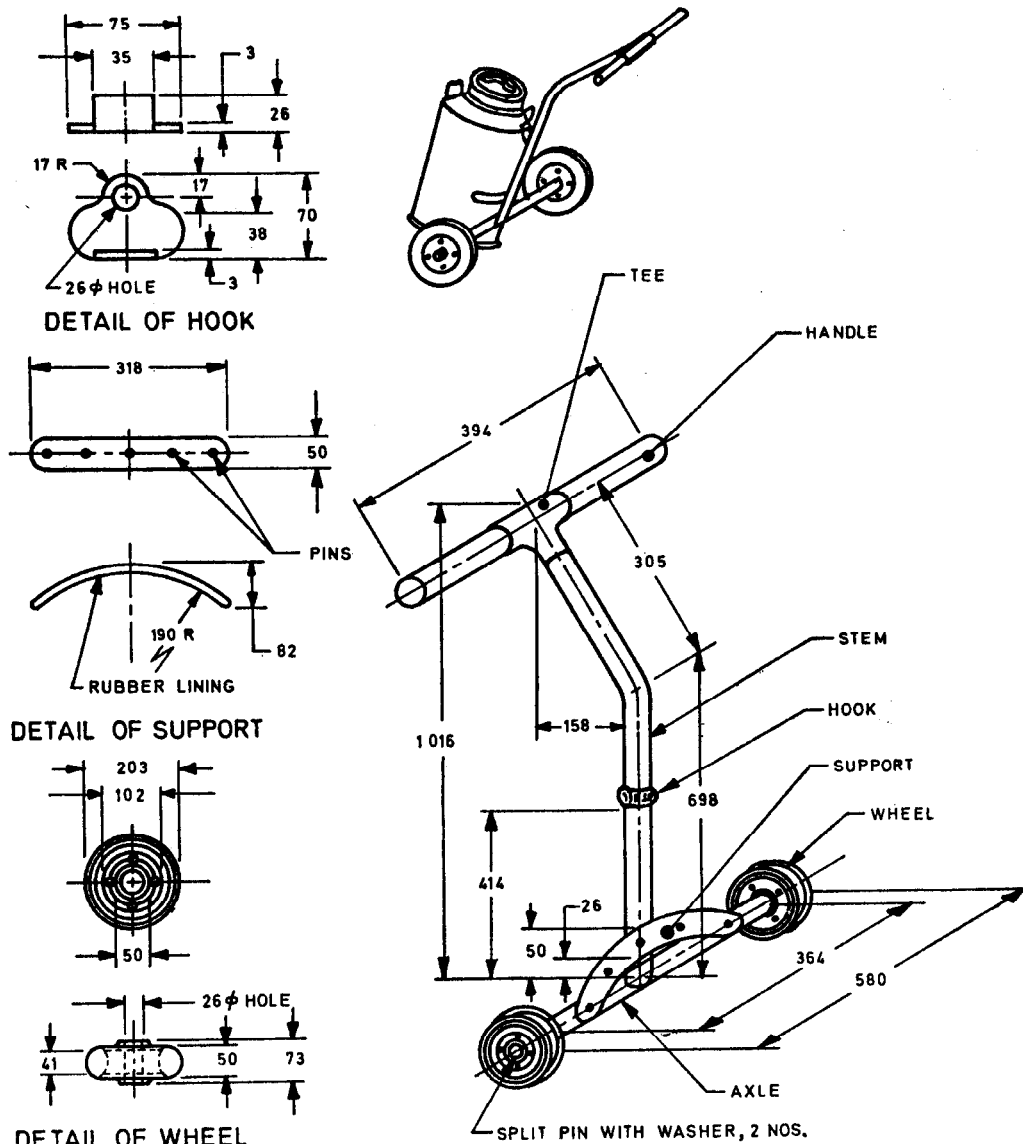




Indian Standard
**SPECIFICATION FOR
MILK CAN TROLLEYS**

1. Scope — Covers dimensions and requirements for can trolleys used for transport of cans of 40-litre and 50-litre capacities [see IS : 1373-1967 Specification for tinned mild steel milk cans (*second revision*) and IS : 1825-1971 Specification for aluminium milk cans (*first revision*)] within the dairy.

2. Dimensions — Shall generally conform to Fig. 1.



All dimensions in millimetres.

FIG. 1 MILK CAN TROLLEY

3. Material

Part	Material	Nominal Size mm
Handle	Galvanized iron pipe conforming to IS : 3601-1966	25
Tee	' Specification for steel tubes for mechanical and general engineering purposes '	do
Stem		25
Axle		do
Hook	Mild steel	25
Support	Mild steel and rubber lining	(see Fig. 1)
Wheels	Mild steel and bonded solid rubber	(see Fig. 1)

Adopted 27 October 1972

© January 1973, ISI

INDIAN STANDARDS INSTITUTION
MANAK BHAVAN, 9 BAHADUR SHAH ZAFAR MARG
NEW DELHI 1

IS : 6684 - 1972

4. Manufacture

4.1 The wheels shall be of material specified in 3 and shall not be slippery. Wheels shall be of heavy duty type and with suitable bush bearings.

4.2 The concave side of the support shall be provided with a rubber lining to protect the can from damage.

4.3 The joints between the stem and axle may be connected by stays or braces.

4.4 The can trolley frame after fabrication should be hot-dip galvanized (see IS : 2629-1966 Recommended practice for hot-dip galvanizing of iron and steel) in order to prevent it from corrosion.

4.5 The can trolley shall be able to withstand the weight of the transport cans filled with milk and there shall not be any deformation or breakage of any part during usage.

5. **Finish** — Shall be smooth. The welding shall be strong and shall not be porous or brittle.

Note — The visual examination of the welding shall be carried out as given in 7.1 of IS : 822-1970 'Code of procedure for inspection of welds'.

6. **Marking** — Shall be marked with manufacturer's name or trade-mark.

6.1 *ISI Certification Marking* — Details available with the Indian Standards Institution, New Delhi 1.

EXPLANATORY NOTE

Can trolleys are used for transport of milk cans within the dairy for ease in handling. These should be such that they do not affect the dairy floors and should not be slippery.